

MANTECA POLICE DEPARTMENT  
MONTHLY CRIME STATISTICS REPORT  
SEPTEMBER 2010

	Current Month	This Month Last Year	% Change Month/Month 2010- 2009	2010 Cleared Offenses YTD	2010 Clearance RATE YTD	2010 Offenses YTD	2009 Offenses YTD	% Change YTD/YTD 2010 - 2009	2009 Cleared Offenses YTD	2009 Clearance RATE YTD
<b>Part One Crime Offenses</b>										
Homicide	0	0	N/C	1	100%	1	2	-50.00%	2	100%
Rape/Unlawful Interc	1	2	-50.00%	6	40%	15	24	-37.50%	14	58%
Robbery	7	7	0.00%	12	27%	44	69	-36.23%	21	30%
Aggravated Assault	11	2	450.00%	34	45%	76	35	117.14%	19	54%
Commercial Burglary	5	8	-37.50%	18	24%	74	83	-10.84%	21	25%
Residential Burglary	18	14	28.57%	23	12%	188	204	-7.84%	14	7%
Other Burglary	1	0	N/C	2	13%	15	9	66.67%	1	11%
Auto Burglary	22	29	-24.14%	13	4%	320	369	-13.28%	14	4%
Grand Theft	26	13	100.00%	40	26%	152	159	-4.40%	19	12%
Vehicle Theft	15	27	-44.44%	17	10%	168	262	-35.88%	31	12%
Arson	1	2	-50.00%	0	0%	7	9	-22.22%	1	11%
All Other Felonies	27	44	-38.64%	231	66%	349	444	-21.40%	304	68%
<b>Total Felonies</b>	<b>134</b>	<b>148</b>	<b>-9.46%</b>	<b>397</b>	<b>28%</b>	<b>1409</b>	<b>1669</b>	<b>-15.58%</b>	<b>461</b>	<b>28%</b>
<b>Total Burglaries</b>	<b>46</b>	<b>51</b>	<b>-9.80%</b>	<b>56</b>	<b>9%</b>	<b>597</b>	<b>665</b>	<b>-10.23%</b>	<b>50</b>	<b>8%</b>
<b>Misdemeanor Offenses</b>										
Misdemeanor Thefts	69	46	50.00%	224	48%	462	455	1.54%	171	38%
All Other Misdemeanors	216	261	-17.24%	1407	76%	1857	2316	-19.82%	1712	74%
<b>Total Misdemeanors</b>	<b>285</b>	<b>307</b>	<b>-7.17%</b>	<b>1631</b>	<b>70%</b>	<b>2319</b>	<b>2771</b>	<b>-16.31%</b>	<b>1883</b>	<b>68%</b>
<b>Miscellaneous Offenses</b>										
Total Narcotic Offenses	20	32	-37.50%	222	98%	227	368	-38.32%	337	92%
Total Alcohol Offenses	48	49	-2.04%	446	99%	450	513	-12.28%	500	97%
Total Domestic Violence	40	33	21.21%	194	69%	283	287	-1.39%	233	81%
Total Fraud/Forgery	16	29	-44.83%	41	17%	237	301	-21.26%	49	16%
Total Code Enforcement	3	0	N/C	37	119%	31	28	10.71%	31	111%
	<b>127</b>	<b>143</b>	<b>-11.19%</b>	<b>940</b>	<b>77%</b>	<b>1228</b>	<b>1497</b>	<b>-17.97%</b>	<b>1150</b>	<b>77%</b>
*N.C. - not calculable										
Chief _____										
				0						

MANTECA POLICE DEPARTMENT  
MONTHLY CRIME STATISTICS REPORT  
SEPTEMBER 2010

Non-Criminal Reports & Services	Current Month	2010 YTD	2009 YTD	% Change YTD/YTD 2010 - 2009
Non-Criminal Reports	165	1468	3350	-56.18%
Service Requests	2910	25808	27313	-5.51%
Written Reports	584	5205	7339	-29.08%
Criminal Complaint Requests	149	1516	2232	-32.08%
Warrants Served	103	749	1105	-32.22%

Property Value	Current Month	2010 YTD	2009 YTD	% Change YTD/YTD 2010 - 2009
Property Stolen	\$206,636.00	\$2,268,145.00	\$2,925,530.00	-22.47%
Property Recovered	\$78,844.00	\$822,863.00	\$1,136,219.00	-27.58%
% Property Value Recovered	38.16%	36.28%	38.84%	-6.59%

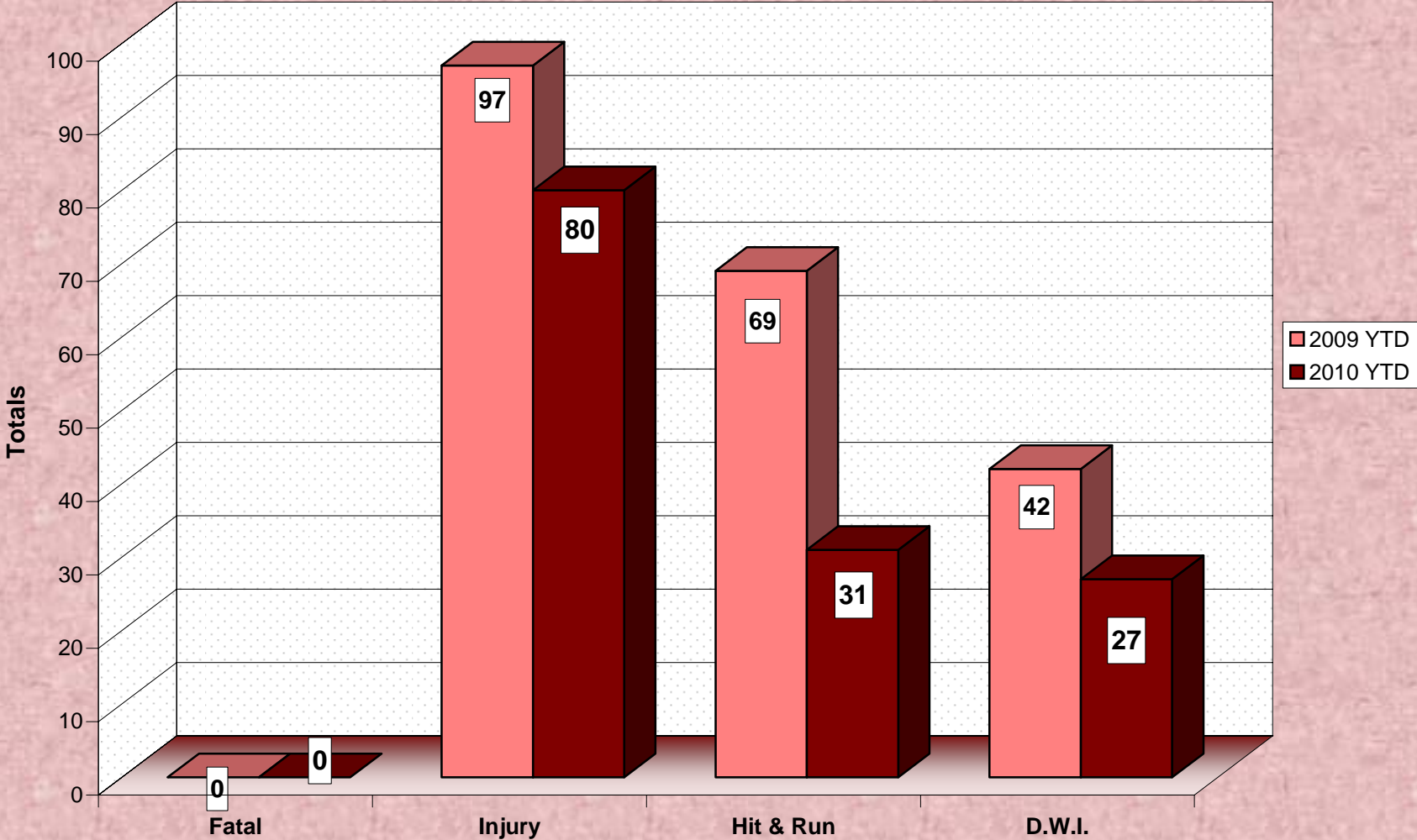
Accidents	Current Month	2010 YTD	2009 YTD	% Change YTD/YTD 2010 - 2009
Total Accidents	50	462	545	-15.23%
Property Damage Only	43	382	448	-14.73%
Fatal	0	0	0	N/C
Injury	7	80	97	-17.53%
Hit & Run	6	31	69	-55.07%
D.W.I.	0	27	42	-35.71%

Arrests	Current Month	2010 YTD	2009 YTD	% Change YTD/YTD 2010 - 2009
Adult Arrests	226	1905	2380	-19.96%
Juvenile Arrests	17	153	239	-35.98%
Total Arrests	243	2058	2619	-21.42%

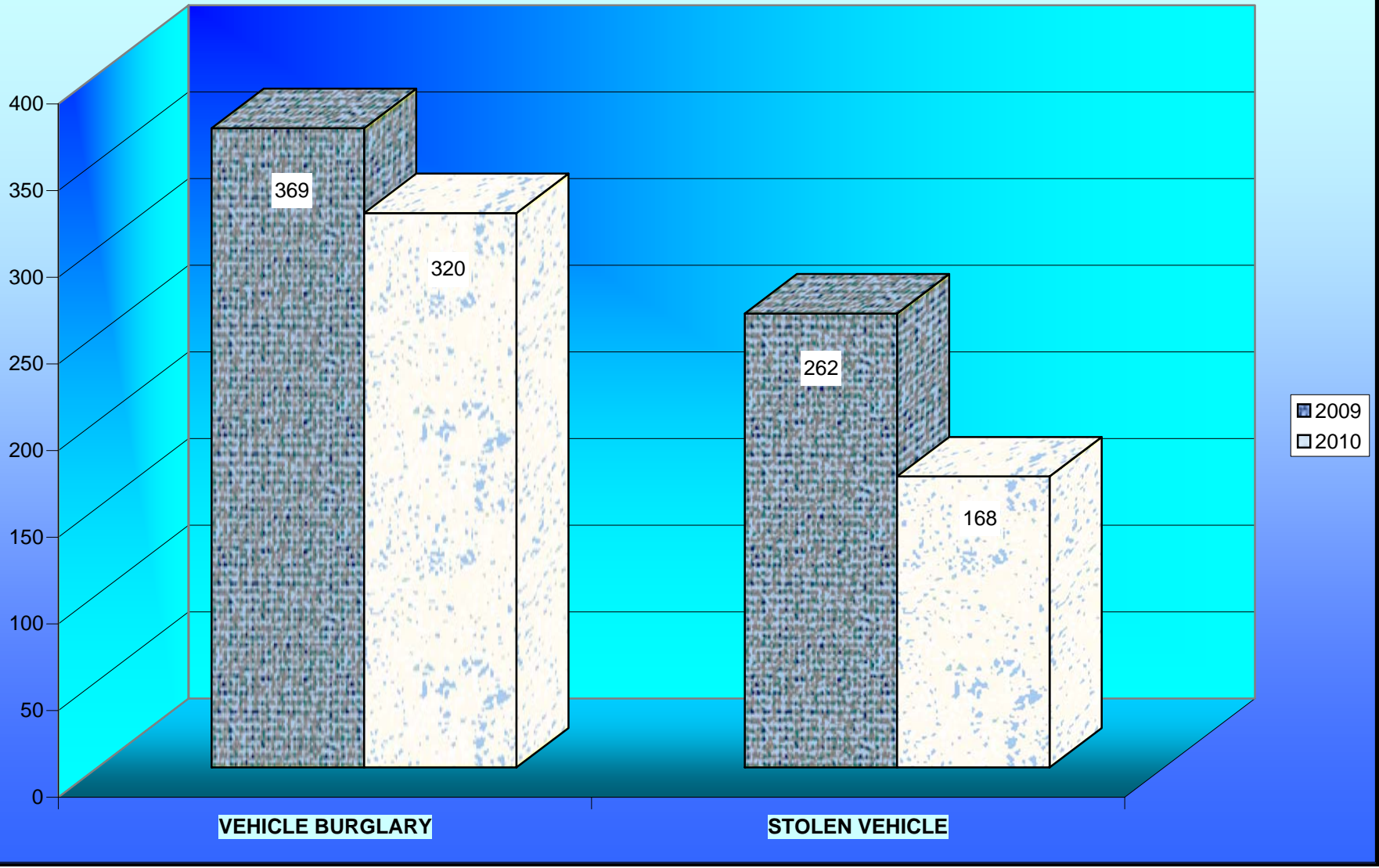
Citations	Current Month	2010 YTD	2009 YTD	% Change YTD/YTD 2010 - 2009
Total Citation Violations	584	5,063	8,209	-38.32%
D.W.I Violations	21	212	181	17.13%
Moving Violations	232	1,763	2,949	-40.22%
Non-Moving Violations	114	1,109	2,597	-57.30%
Child Restraint Violations	9	47	48	-2.08%
Seat Belt Violations	60	457	179	155.31%
All Other Violations	199	1,800	2,292	-21.47%
Parking Violations	123	1,523	2,039	-25.31%

Department Actions	Current Month	2010 YTD	2009 YTD	% Change YTD/YTD 2010 - 2009
Pursuits	1	9	14	-35.71%
Use of Force	5	25	25	0.00%

# ACCIDENT COMPARISON 2009 - 2010 Year to Date

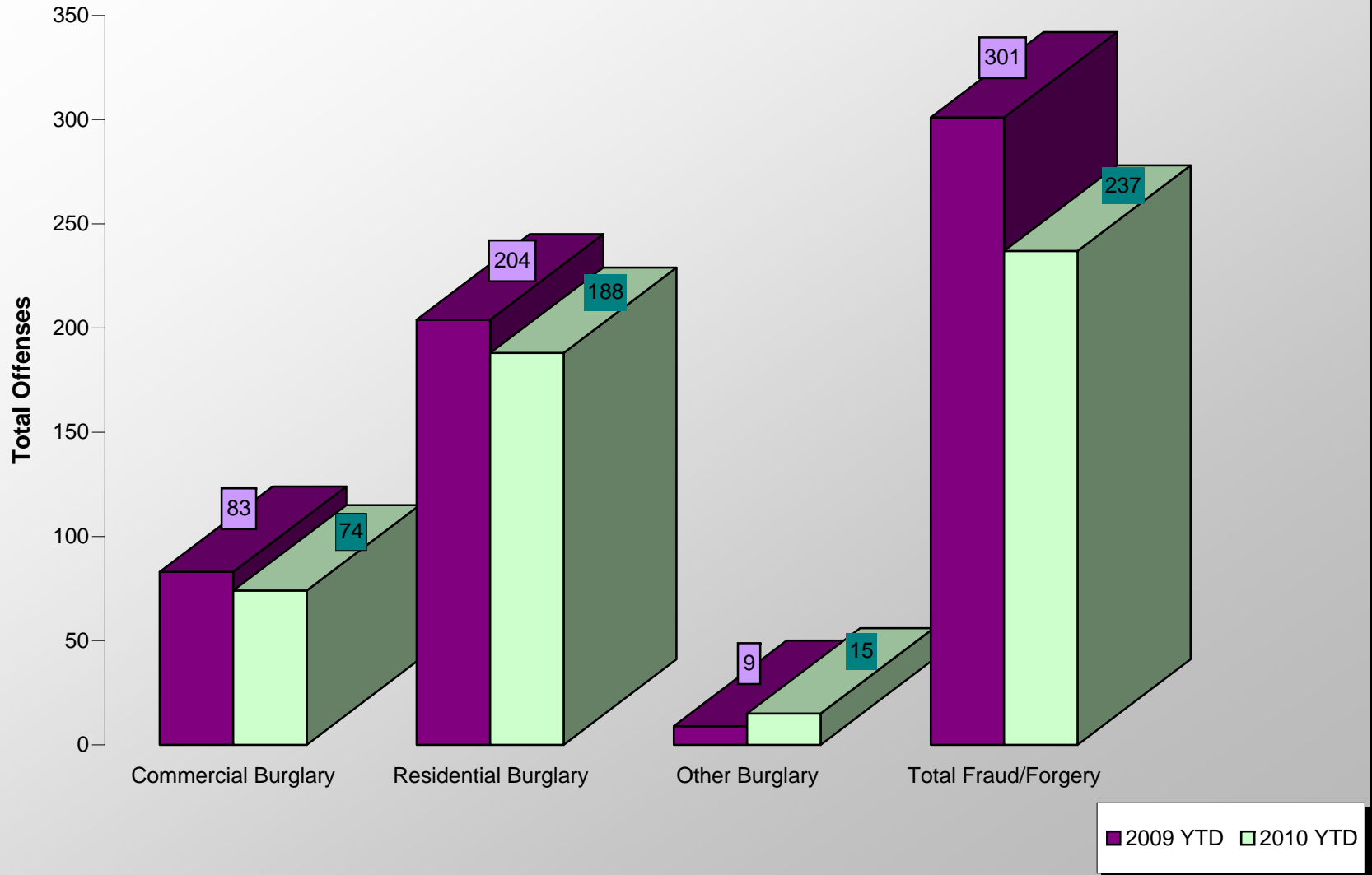


# VEHICLE THEFTS

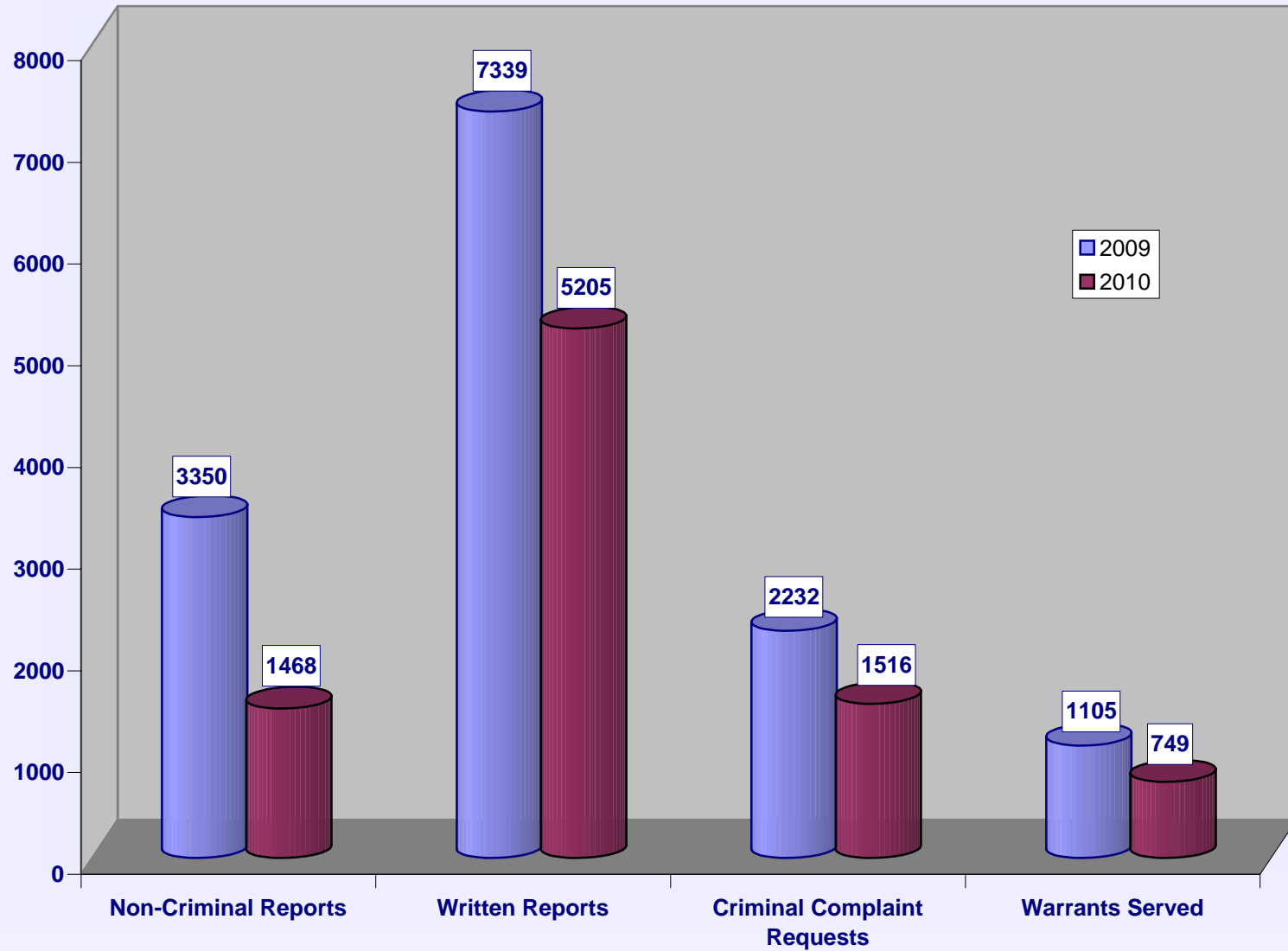


# BURGLARIES

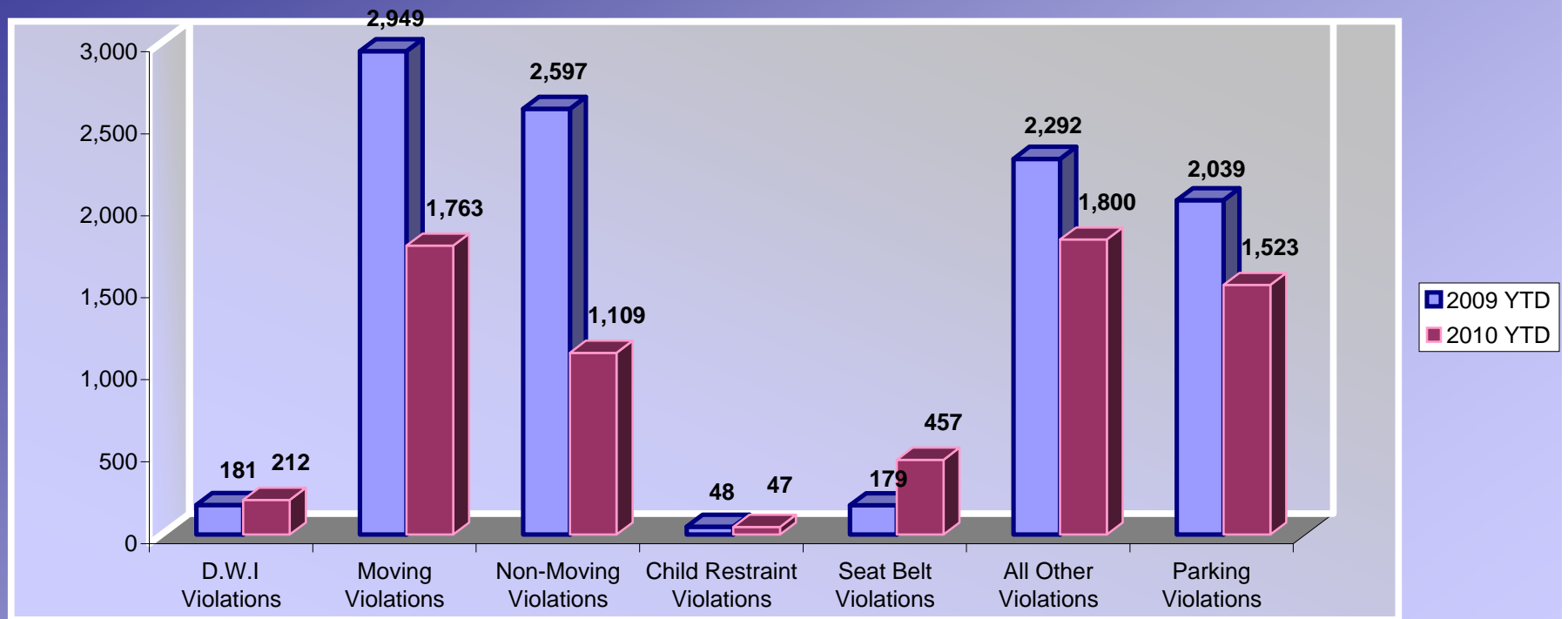
## 2009 - 2010 Year to Date



### SERVICE & NON-SERVICE REQUESTS 2009 - 2010



# TRAFFIC CITATIONS



# NARCOTIC / ALCOHOL OFFENSES 2009 - 2010

