

MANTECA POLICE DEPARTMENT
MONTHLY CRIME STATISTICS REPORT
JANUARY 2012

Part One Crime Offenses	Current Month	This Month Last Year	% Change Month/Month 2012- 2011	2012 Cleared Offenses YTD	2012 Clearance RATE YTD	2012 Offenses YTD	2011 Offenses YTD	% Change YTD/YTD 2012 - 2011	2011 Cleared Offenses YTD	2011 Clearance RATE YTD
Homicide	0	0	N/C	0	N/C	0	0	N/C	0	N/C
Rape/Unlawful Interc	0	1	-100.00%	0	N/C	0	1	-100.00%	0	0%
Robbery	6	5	20.00%	2	33%	6	5	20.00%	3	60%
Aggravated Assault	9	4	125.00%	1	11%	9	4	125.00%	4	100%
Commercial Burglary	7	12	-41.67%	1	14%	7	12	-41.67%	2	17%
Residential Burglary	20	29	-31.03%	3	15%	20	29	-31.03%	0	0%
Other Burglary	1	1	0.00%	0	0%	1	1	0.00%	0	0%
Auto Burglary	50	59	-15.25%	0	0%	50	59	-15.25%	1	2%
Grand Theft	9	15	-40.00%	0	0%	9	15	-40.00%	3	20%
Vehicle Theft	34	22	54.55%	1	3%	34	22	54.55%	1	5%
Arson	2	1	N/C	0	0%	2	1	100.00%	0	0%
All Other Felonies	42	40	5.00%	34	81%	42	40	5.00%	34	85%
Total Felonies	180	189	-4.76%	42	23%	180	189	-4.76%	48	25%
Total Burglaries	78	101	-22.77%	4	5%	78	101	-22.77%	3	3%
Misdemeanor Offenses	Current Month	This Month Last Year	% Change Month/Month 2012 - 2011	2012 Cleared Offenses YTD	2012 Clearance RATE YTD	2012 Offenses YTD	2011 Offenses YTD	% Change YTD/YTD 2012 - 2011	2011 Cleared Offenses YTD	2011 Clearance RATE YTD
Misdemeanor Thefts	80	70	14.29%	34	43%	80	70	14.29%	41	59%
All Other Misdemeanors	198	182	8.79%	125	63%	198	182	8.79%	142	78%
Total Misdemeanors	278	252	10.32%	159	57%	278	252	10.32%	183	73%
Miscellaneous Offenses	Current Month	This Month Last Year	% Change Month/Month 2012 - 2011	2012 Cleared Offenses YTD	2012 Clearance RATE YTD	2012 Offenses YTD	2011 Offenses YTD	% Change YTD/YTD 2012 - 2011	2011 Cleared Offenses YTD	2011 Clearance RATE YTD
Total Narcotic Offenses	32	20	60.00%	30	94%	32	20	60.00%	20	100%
Total Alcohol Offenses	33	49	-32.65%	32	97%	33	49	-32.65%	50	102%
Total Domestic Violence	32	27	18.52%	30	94%	32	27	18.52%	19	70%
Total Fraud/Forgery	28	23	21.74%	2	7%	28	23	21.74%	5	22%
Total Code Enforcement	1	2	-50.00%	0	0%	1	2	-50.00%	2	100%
	126	121	4.13%	94	75%	126	121	4.13%	96	79%
*N.C. - not calculable										
Chief										
*GRAND THEFT CHANGED FROM OVER \$400 TO OVER \$950 01/01/2011						0				

MANTECA POLICE DEPARTMENT
MONTHLY CRIME STATISTICS REPORT
JANUARY 2012

Non-Criminal Reports & Services	Current Month	2012 YTD	2011 YTD	% Change YTD/YTD 2012 - 2011
Non-Criminal Reports	144	144	129	11.63%
Service Requests	2667	2667	2665	0.08%
Written Reports	603	603	577	4.51%
Criminal Complaint Requests	181	181	140	29.29%
Warrants Served	91	91	91	0.00%

Property Value	Current Month	2012 YTD	2011 YTD	% Change YTD/YTD 2012 - 2011
Property Stolen	\$609,808.00	\$609,808.00	\$506,394.00	20.42%
Property Recovered	\$235,915.00	\$235,915.00	\$191,196.00	23.39%
% Property Value Recovered	38.69%	38.69%	37.76%	2.46%

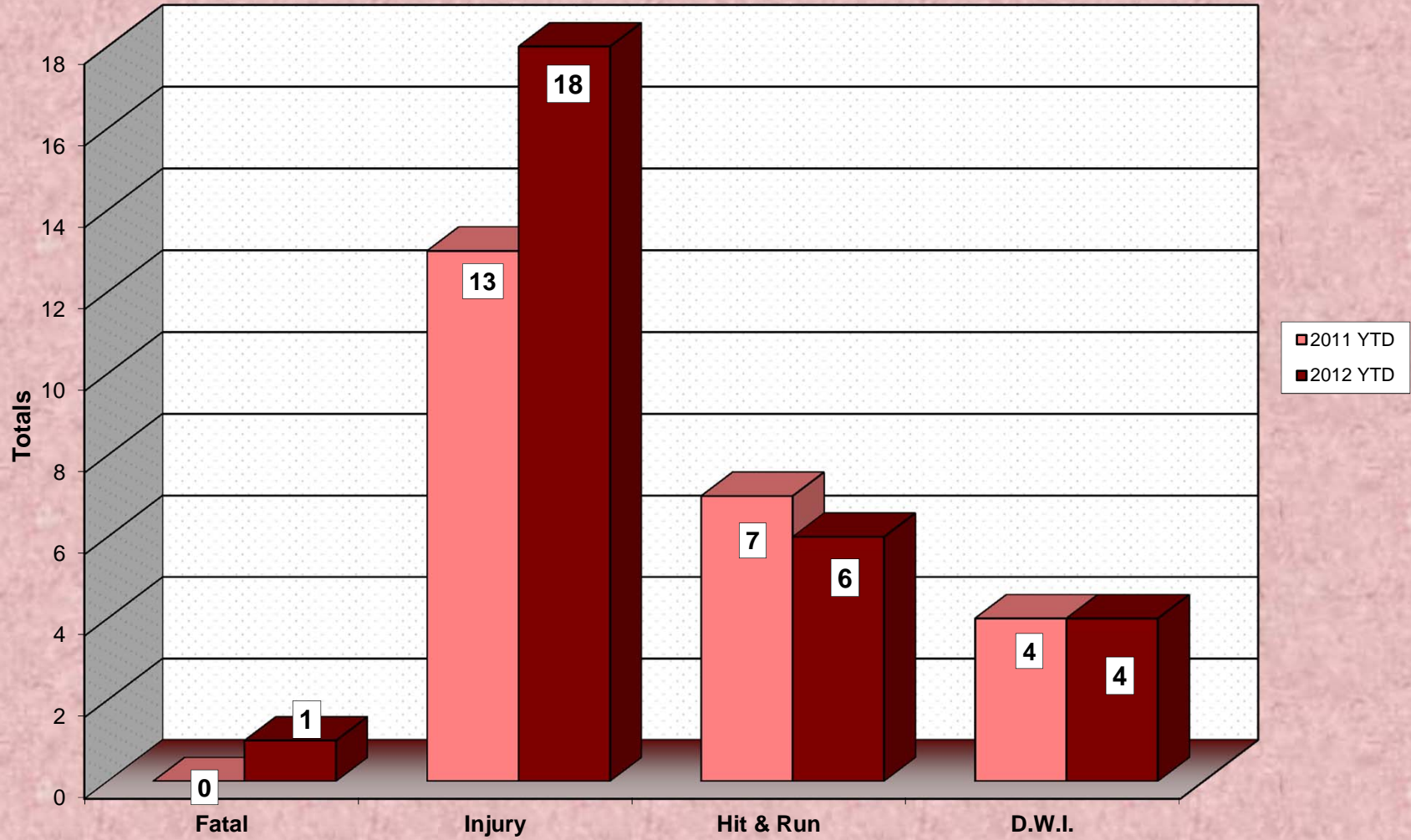
Accidents	Current Month	2012 YTD	2011 YTD	% Change YTD/YTD 2012 - 2011
Total Accidents	45	45	58	-22.41%
Property Damage Only	26	26	45	-42.22%
Fatal	1	1	0	100.00%
Injury	18	18	13	38.46%
Hit & Run	6	6	7	-14.29%
D.W.I.	4	4	4	0.00%

Arrests	Current Month	2012 YTD	2011 YTD	% Change YTD/YTD 2012 - 2011
Adult Arrests	192	192	212	-9.43%
Juvenile Arrests	10	10	25	-60.00%
Total Arrests	202	202	237	-14.77%

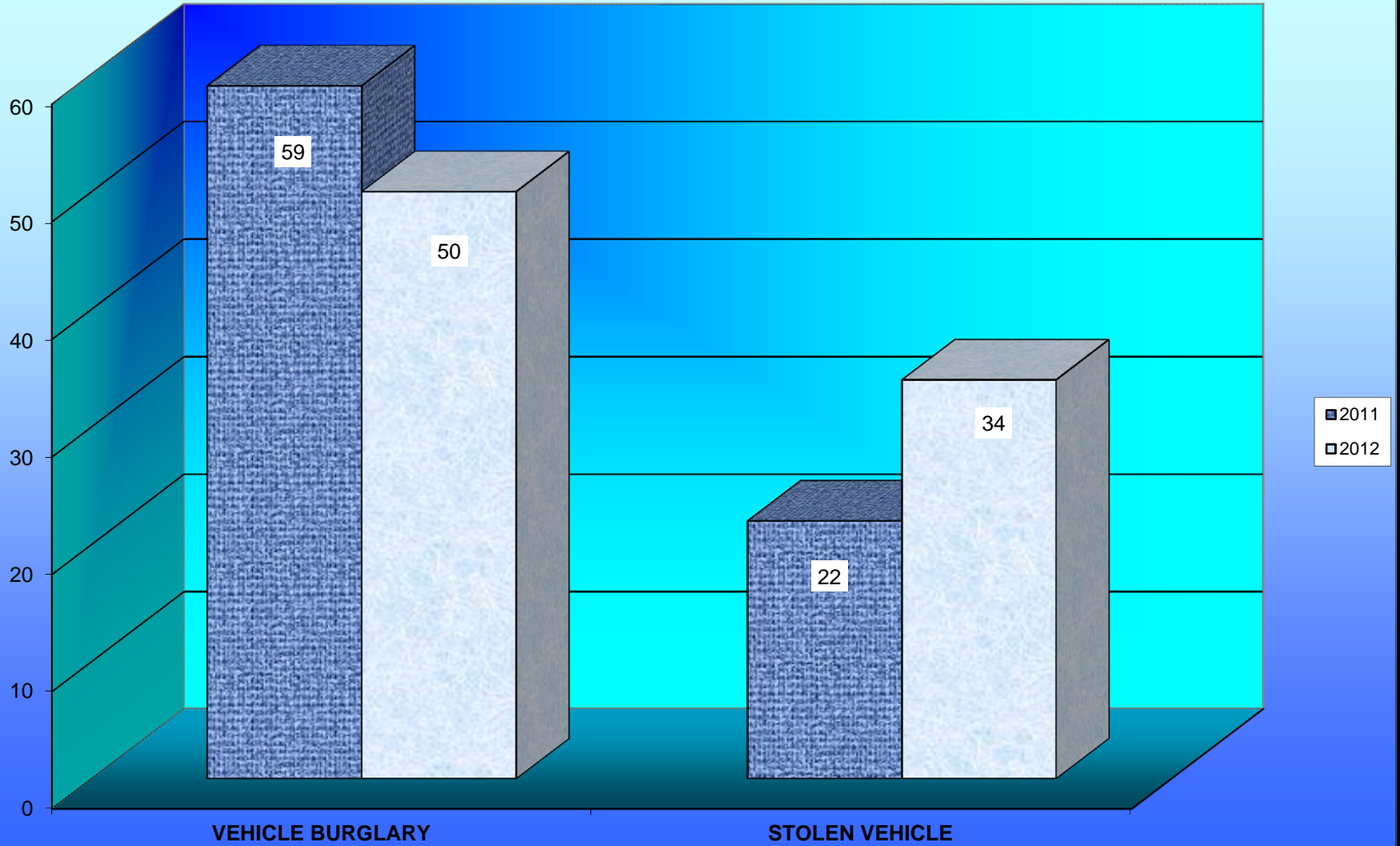
Citations	Current Month	2012 YTD	2011 YTD	% Change YTD/YTD 2012 - 2011
Total Citation Violations	596	596	492	21.14%
D.W.I Violations	10	10	15	-33.33%
Moving Violations	202	202	118	71.19%
Non-Moving Violations	205	205	164	25.00%
Child Restraint Violations	6	6	1	500.00%
Seat Belt Violations	105	105	20	425.00%
All Other Violations	170	170	185	-8.11%
Parking Violations	24	24	76	-68.42%

Department Actions	Current Month	2012 YTD	2011 YTD	% Change YTD/YTD 2012 - 2011
Pursuits	1	1	2	-50.00%
Use of Force	2	2	1	100.00%

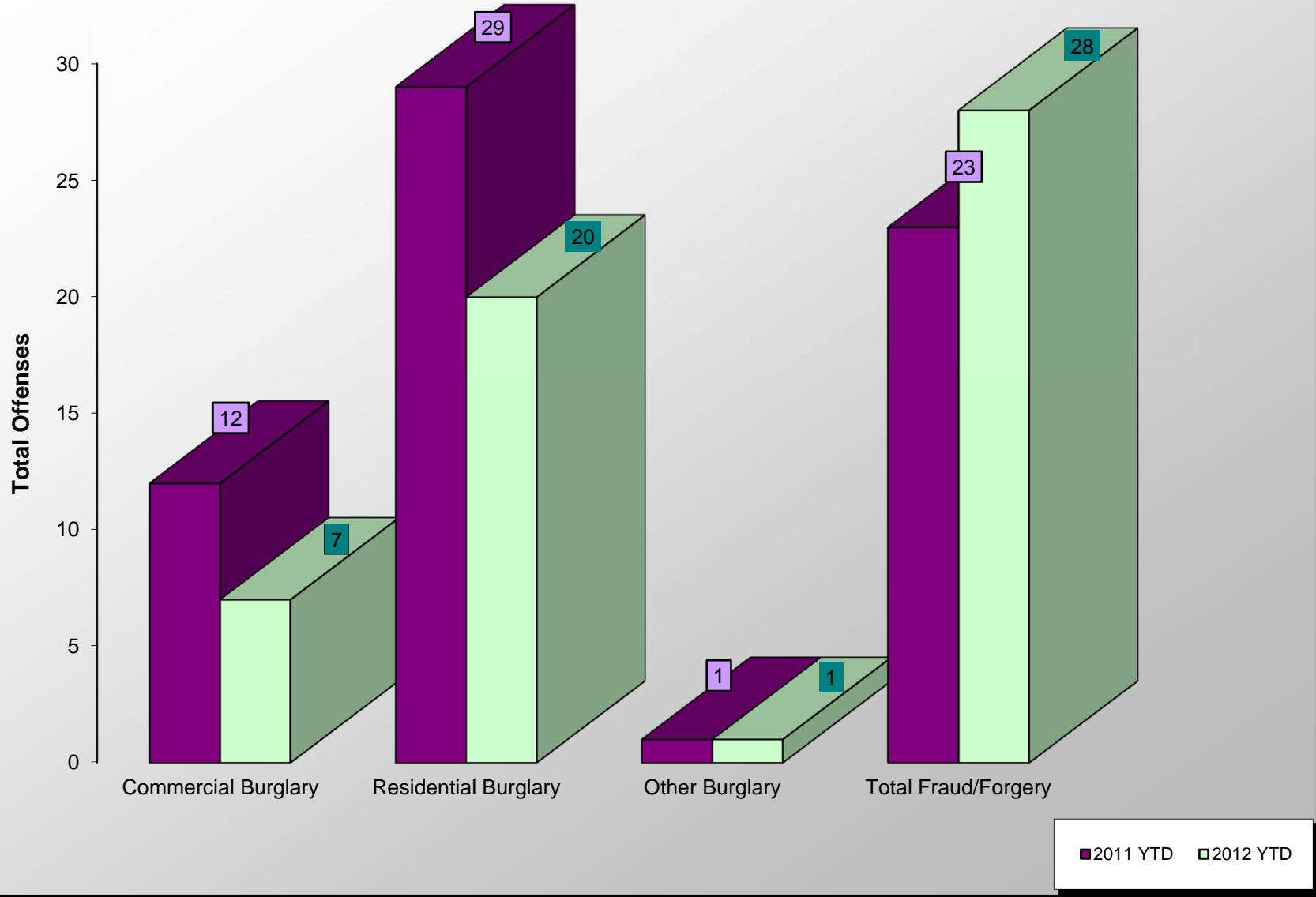
ACCIDENT COMPARISON 2011 - 2012 Year to Date



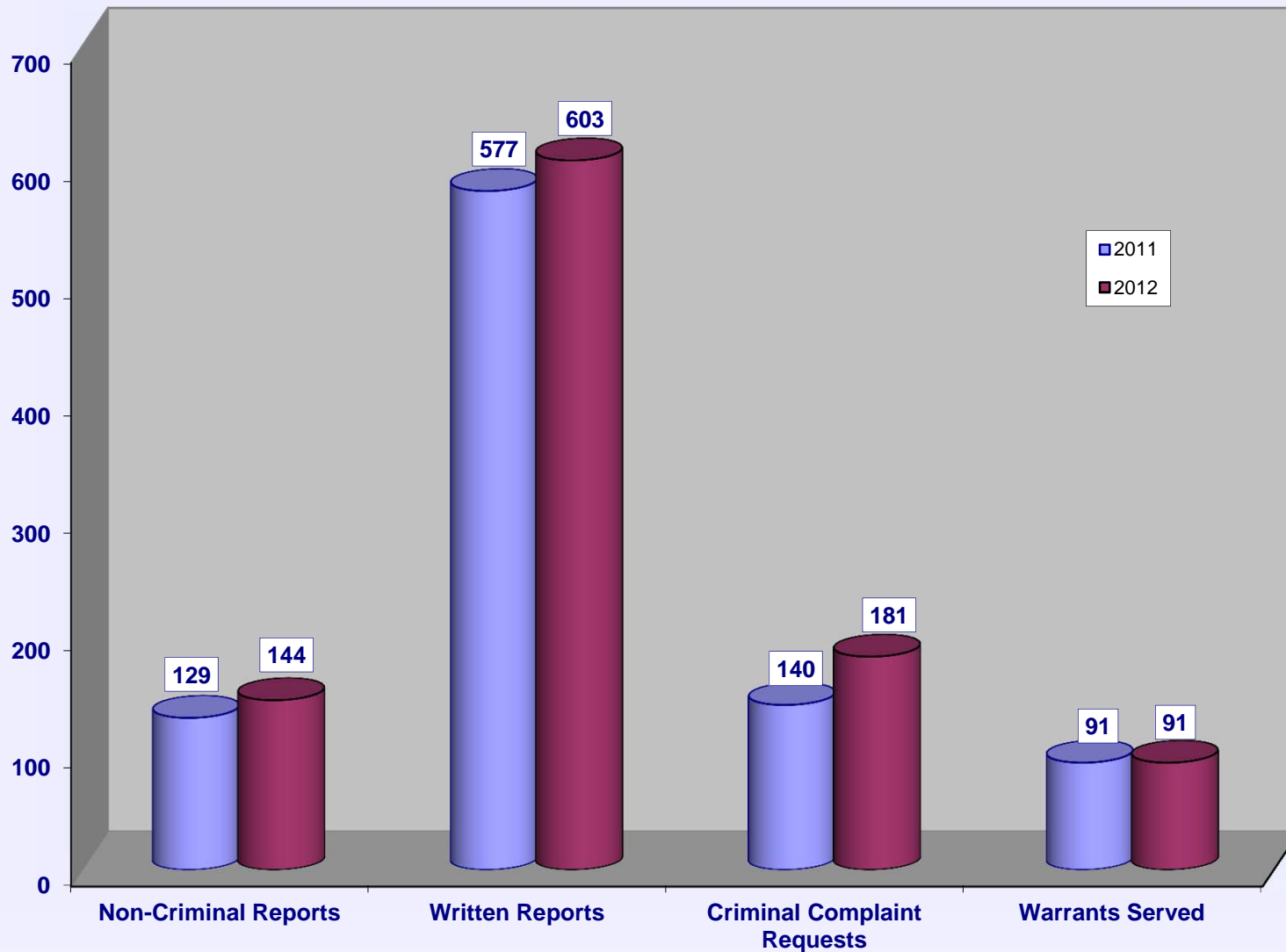
VEHICLE THEFTS



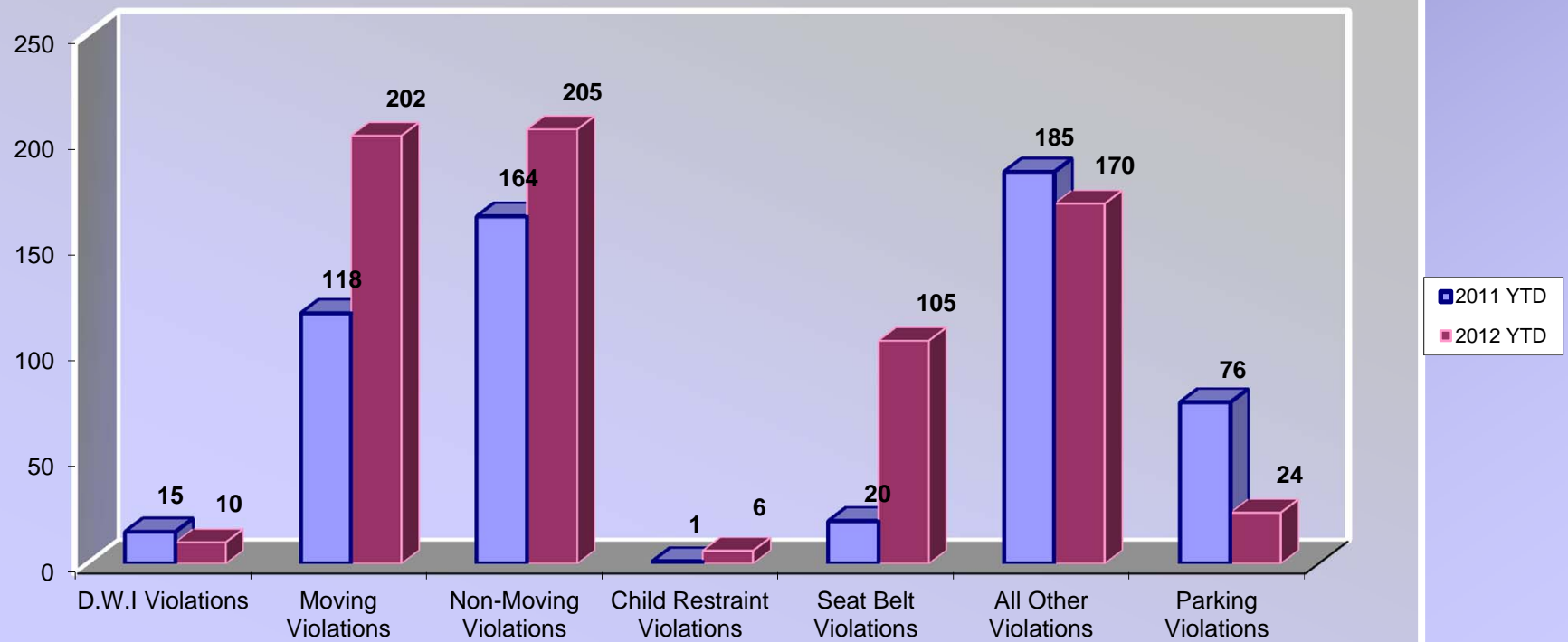
BURGLARIES 2011 - 2012 Year to Date



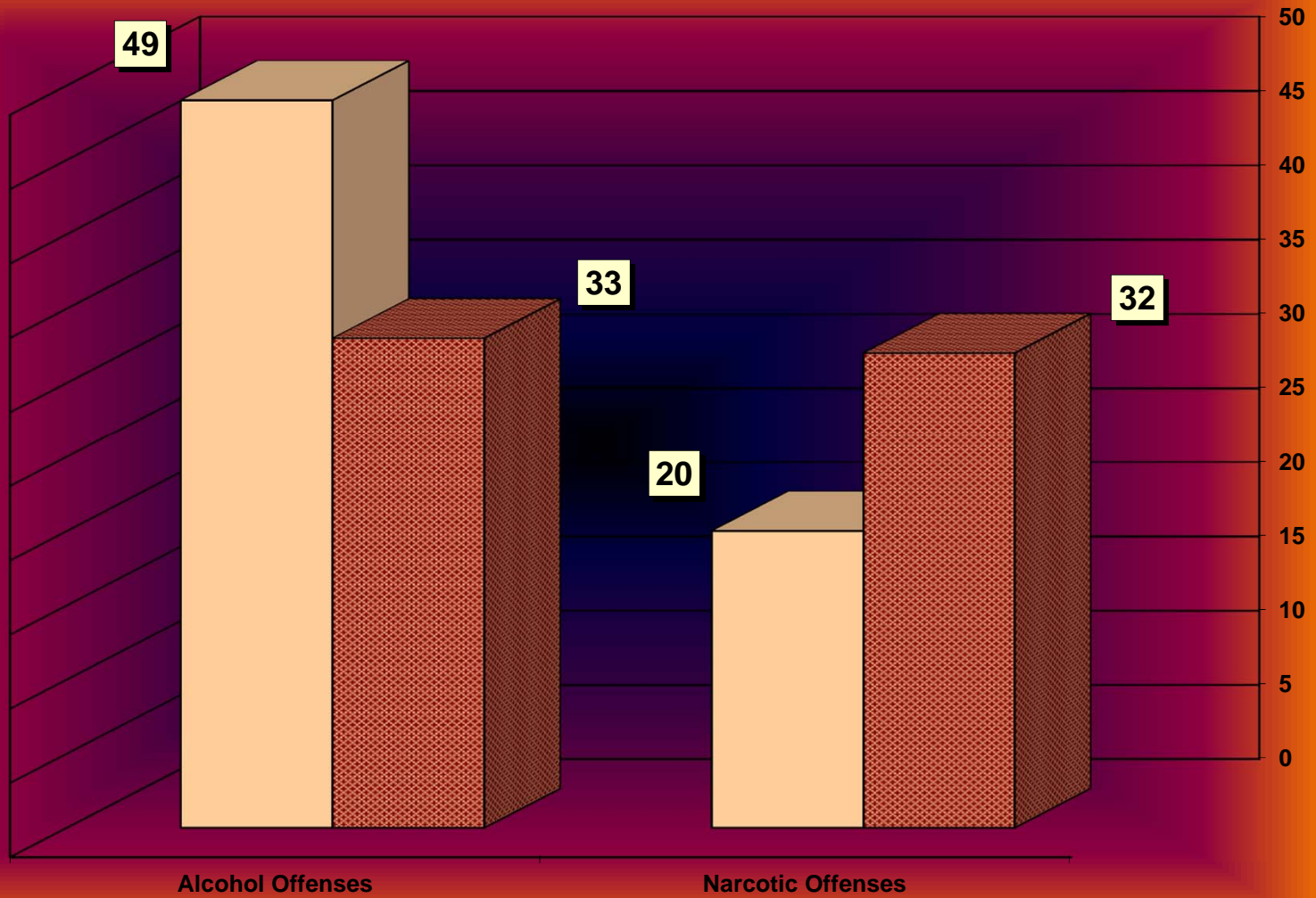
SERVICE & NON-SERVICE REQUESTS 2011 - 2012



TRAFFIC CITATIONS



NARCOTIC / ALCOHOL OFFENSES 2011 - 2012



■ 2012 □ 2011

Department Actions

