

MANTECA POLICE DEPARTMENT
MONTHLY CRIME STATISTICS REPORT
FEBRUARY 2012

Part One Crime Offenses	Current Month	This Month Last Year	% Change Month/Month 2012- 2011	2012 Cleared Offenses YTD	2012 Clearance RATE YTD	2012 Offenses YTD	2011 Offenses YTD	% Change YTD/YTD 2012 - 2011	2011 Cleared Offenses YTD	2011 Clearance RATE YTD
Homicide	0	0	N/C	0	N/C	0	0	N/C	0	N/C
Rape/Unlawful Interc	2	1	100.00%	1	50%	2	2	0.00%	2	100%
Robbery	5	3	66.67%	4	36%	11	8	37.50%	5	63%
Aggravated Assault	6	4	50.00%	2	13%	15	8	87.50%	7	88%
Commercial Burglary	12	8	50.00%	7	37%	19	20	-5.00%	6	30%
Residential Burglary	24	18	33.33%	7	16%	44	47	-6.38%	0	0%
Other Burglary	2	0	200.00%	0	0%	3	1	200.00%	0	0%
Auto Burglary	37	36	2.78%	6	7%	87	95	-8.42%	2	2%
Grand Theft	10	10	0.00%	4	21%	19	25	-24.00%	4	16%
Vehicle Theft	27	26	3.85%	3	5%	61	48	27.08%	4	8%
Arson	2	2	0.00%	1	25%	4	3	33.33%	0	0%
All Other Felonies	39	32	21.88%	61	75%	81	72	12.50%	68	94%
Total Felonies	166	140	18.57%	96	28%	346	329	5.17%	98	30%
Total Burglaries	75	62	20.97%	20	13%	153	163	-6.13%	8	5%
Misdemeanor Offenses	Current Month	This Month Last Year	% Change Month/Month 2012 - 2011	2012 Cleared Offenses YTD	2012 Clearance RATE YTD	2012 Offenses YTD	2011 Offenses YTD	% Change YTD/YTD 2012 - 2011	2011 Cleared Offenses YTD	2011 Clearance RATE YTD
Misdemeanor Thefts	69	67	2.99%	56	38%	149	134	11.19%	72	54%
All Other Misdemeanors	167	147	13.61%	260	71%	365	329	10.94%	281	85%
Total Misdemeanors	236	214	10.28%	316	61%	514	463	11.02%	353	76%
Miscellaneous Offenses	Current Month	This Month Last Year	% Change Month/Month 2012 - 2011	2012 Cleared Offenses YTD	2012 Clearance RATE YTD	2012 Offenses YTD	2011 Offenses YTD	% Change YTD/YTD 2012 - 2011	2011 Cleared Offenses YTD	2011 Clearance RATE YTD
Total Narcotic Offenses	22	27	-18.52%	52	96%	54	47	14.89%	46	98%
Total Alcohol Offenses	30	37	-18.92%	52	83%	63	86	-26.74%	90	105%
Total Domestic Violence	20	21	-4.76%	48	92%	52	48	8.33%	58	121%
Total Fraud/Forgery	23	26	-11.54%	9	18%	51	49	4.08%	9	18%
Total Code Enforcement	1	0	100.00%	2	100%	2	2	0.00%	3	150%
	96	111	-13.51%	163	73%	222	232	-4.31%	206	89%
*N.C. - not calculable										
Chief										
'GRAND THEFT CHANGED FROM OVER \$400 TO OVER \$950 01/01/2011						0				

MANTECA POLICE DEPARTMENT
MONTHLY CRIME STATISTICS REPORT
FEBRUARY 2012

Non-Criminal Reports & Services	Current Month	2012 YTD	2011 YTD	% Change YTD/YTD 2012 - 2011
Non-Criminal Reports	125	269	251	7.17%
Service Requests	2413	5080	5042	0.75%
Written Reports	529	1132	1051	7.71%
Criminal Complaint Requests	172	353	276	27.90%
Warrants Served	87	178	169	5.33%

Property Value	Current Month	2012 YTD	2011 YTD	% Change YTD/YTD 2012 - 2011
Property Stolen	\$324,523.00	\$934,331.00	\$890,513.00	4.92%
Property Recovered	\$66,471.00	\$302,386.00	\$292,806.00	3.27%
% Property Value Recovered	20.48%	32.36%	32.88%	-1.57%

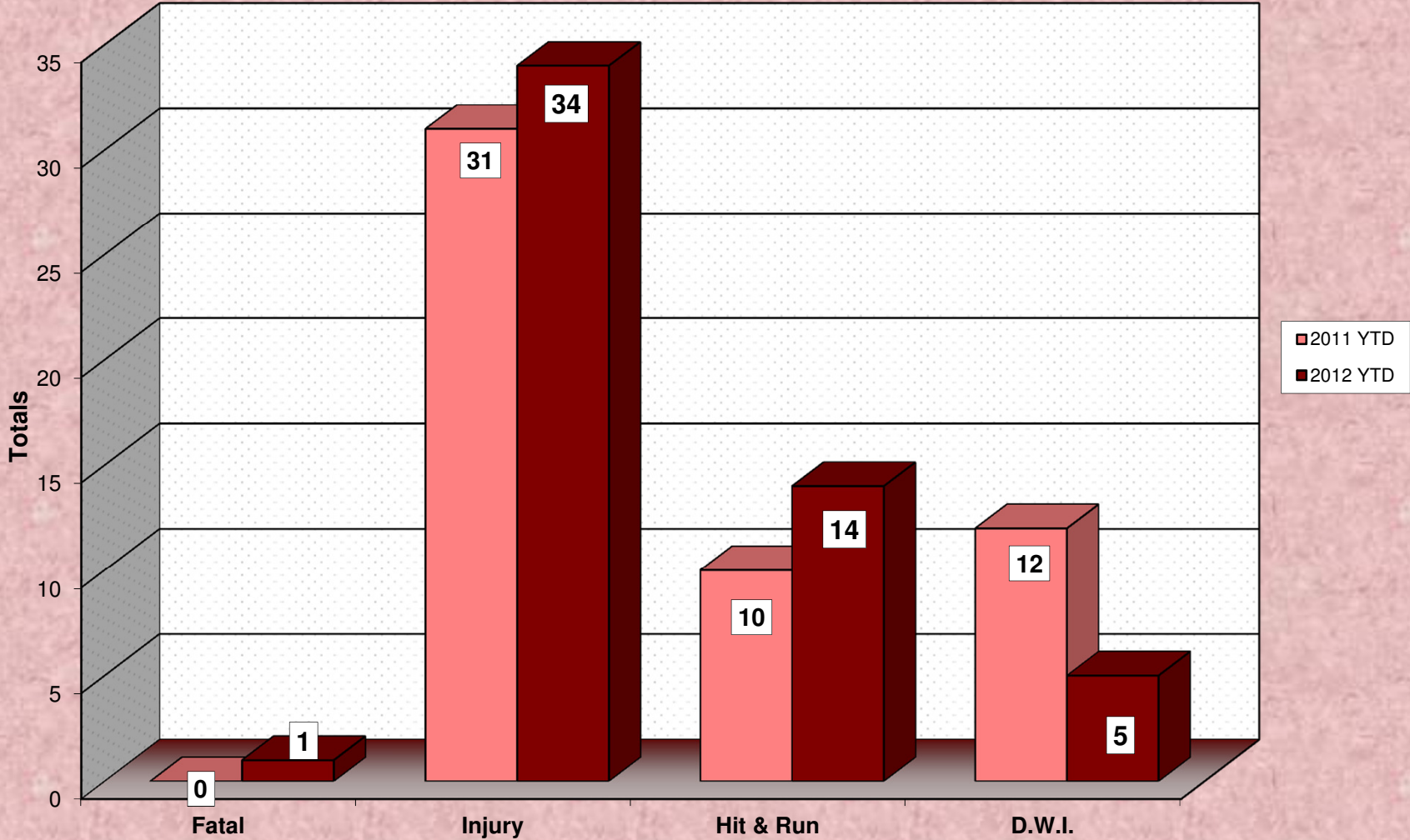
Accidents	Current Month	2012 YTD	2011 YTD	% Change YTD/YTD 2012 - 2011
Total Accidents	44	89	112	-20.54%
Property Damage Only	29	55	81	-32.10%
Fatal	0	1	0	100.00%
Injury	16	34	31	9.68%
Hit & Run	8	14	10	40.00%
D.W.I.	1	5	12	-58.33%

Arrests	Current Month	2012 YTD	2011 YTD	% Change YTD/YTD 2012 - 2011
Adult Arrests	192	384	408	-5.88%
Juvenile Arrests	24	34	50	-32.00%
Total Arrests	216	418	458	-8.73%

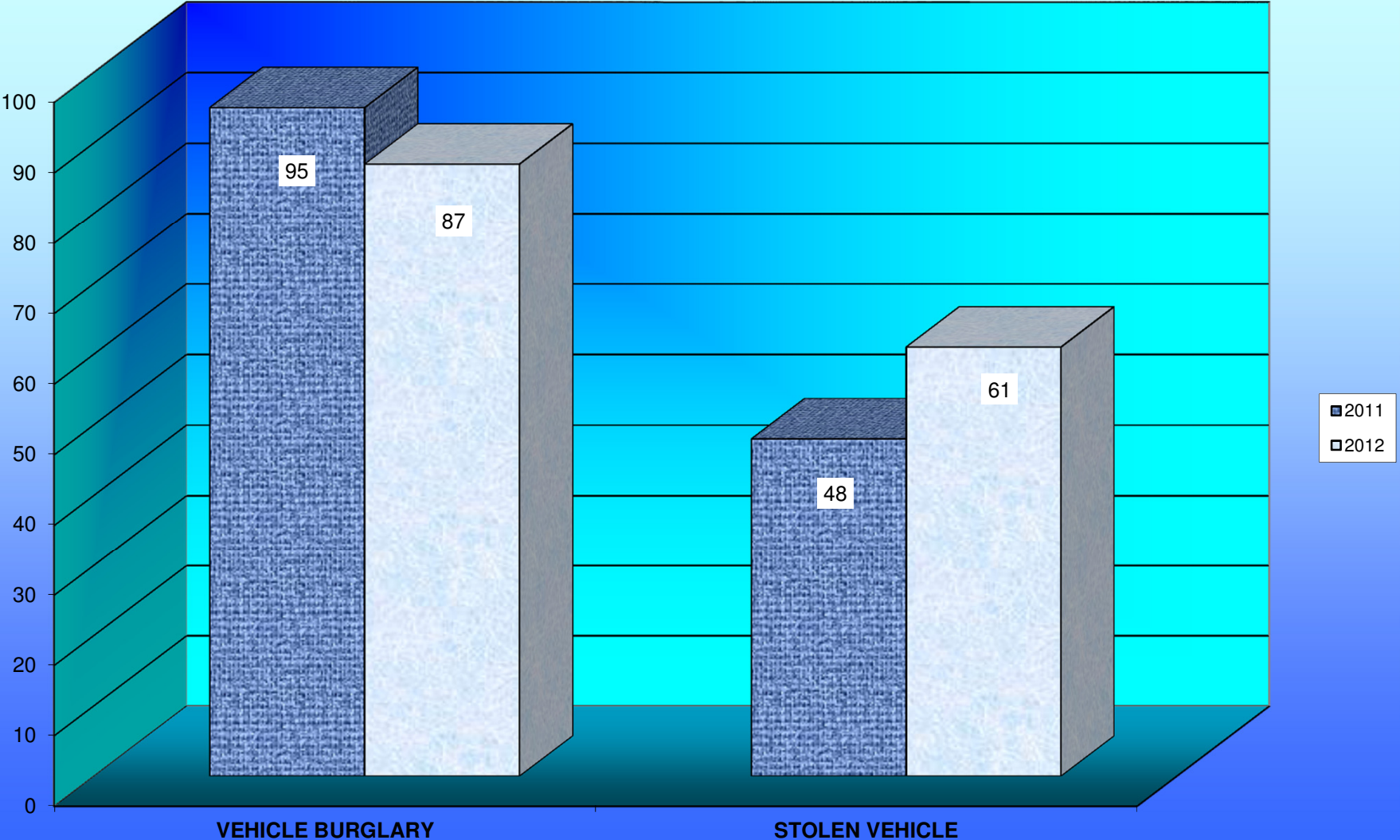
Citations	Current Month	2012 YTD	2011 YTD	% Change YTD/YTD 2012 - 2011
Total Citation Violations	533	1,129	838	34.73%
D.W.I Violations	9	19	34	-44.12%
Moving Violations	182	384	190	102.11%
Non-Moving Violations	171	376	249	51.00%
Child Restraint Violations	0	6	2	200.00%
Seat Belt Violations	57	162	30	440.00%
All Other Violations	166	336	341	-1.47%
Parking Violations	31	55	169	-67.46%

Department Actions	Current Month	2012 YTD	2011 YTD	% Change YTD/YTD 2012 - 2011
Pursuits	4	5	3	66.67%
Use of Force	0	2	3	-33.33%

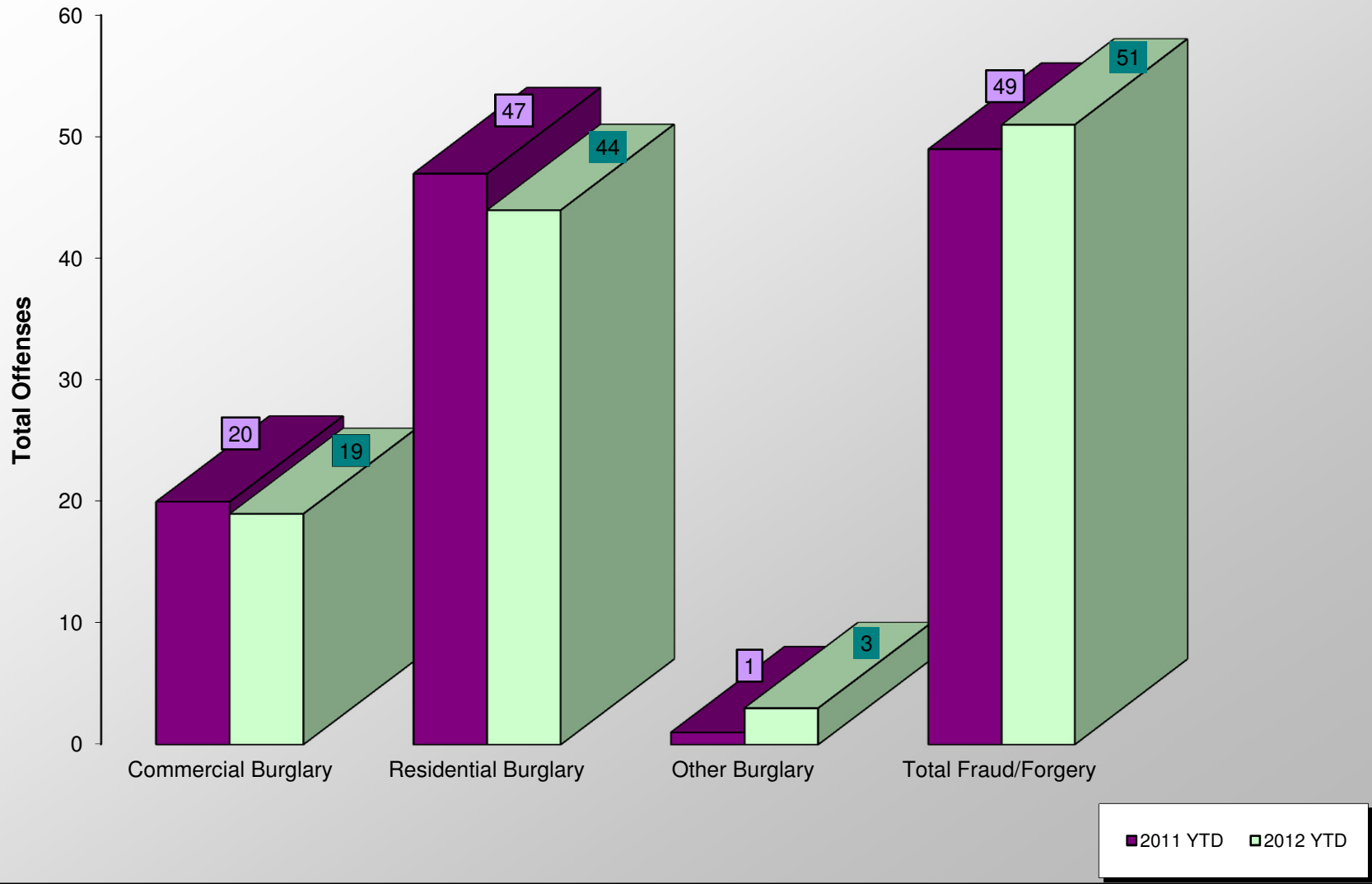
ACCIDENT COMPARISON 2011 - 2012 Year to Date



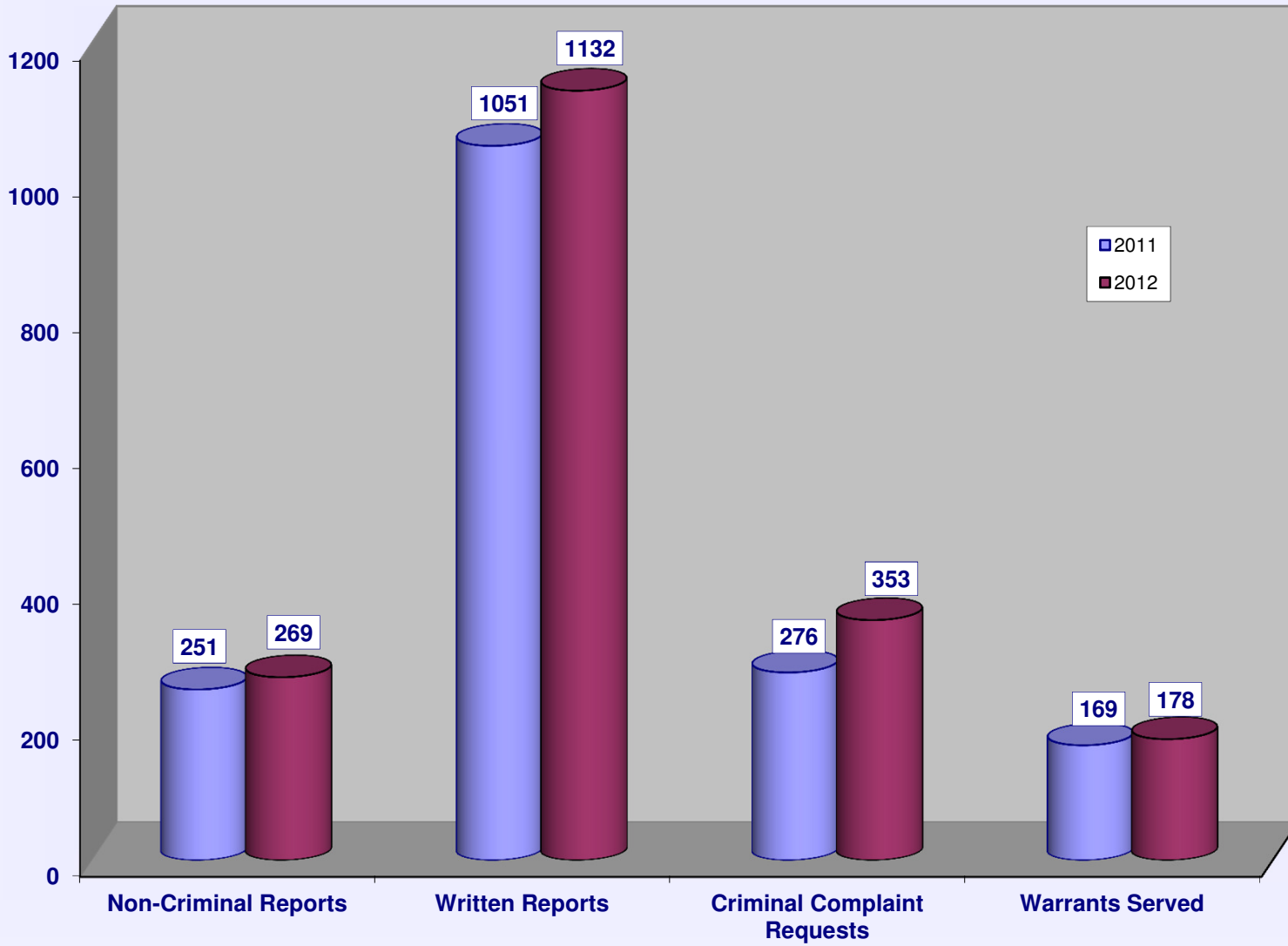
VEHICLE THEFTS



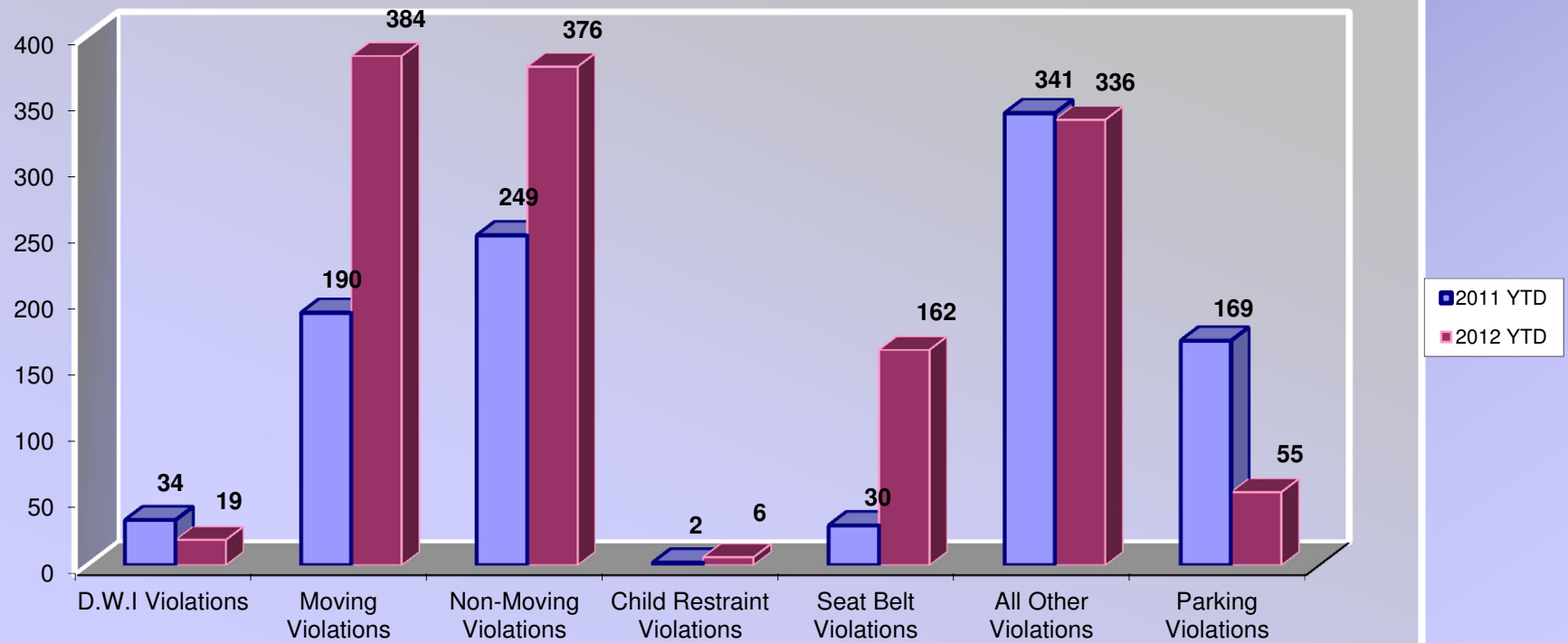
BURGLARIES 2011 - 2012 Year to Date



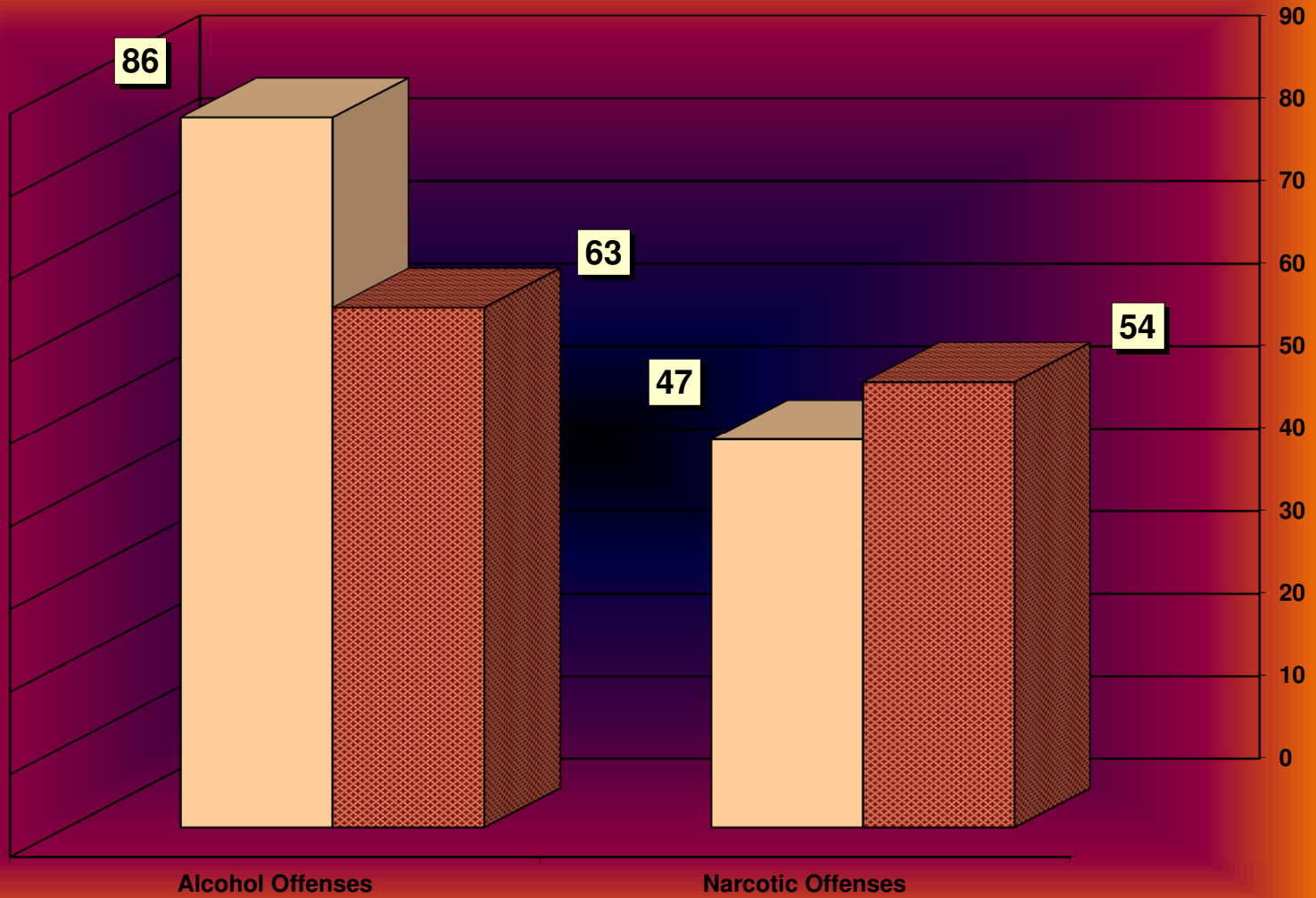
SERVICE & NON-SERVICE REQUESTS 2011 - 2012



TRAFFIC CITATIONS



NARCOTIC / ALCOHOL OFFENSES 2011 - 2012



■ 2012 □ 2011

Department Actions

