

MANTECA POLICE DEPARTMENT
MONTHLY CRIME STATISTICS REPORT
MARCH 2012

Part One Crime Offenses	Current Month	This Month Last Year	% Change Month/Month 2012- 2011	2012 Cleared Offenses YTD	2012 Clearance RATE YTD	2012 Offenses YTD	2011 Offenses YTD	% Change YTD/YTD 2012 - 2011	2011 Cleared Offenses YTD	2011 Clearance RATE YTD
Homicide	0	0	N/C	0	N/C	0	0	N/C	0	N/C
Rape/Unlawful Interc	0	2	-100.00%	1	50%	2	4	-50.00%	4	100%
Robbery	4	4	0.00%	5	33%	15	12	25.00%	5	42%
Aggravated Assault	12	3	300.00%	10	37%	27	11	145.45%	7	64%
Commercial Burglary	18	11	63.64%	14	38%	37	31	19.35%	10	32%
Residential Burglary	23	28	-17.86%	8	12%	67	75	-10.67%	5	7%
Other Burglary	4	1	300.00%	0	0%	7	2	250.00%	0	0%
Auto Burglary	48	45	6.67%	7	5%	135	140	-3.57%	7	5%
Grand Theft	6	11	-45.45%	5	20%	25	36	-30.56%	6	17%
Vehicle Theft	18	20	-10.00%	6	8%	79	68	16.18%	11	16%
Arson	3	1	200.00%	1	14%	7	4	75.00%	0	0%
All Other Felonies	32	40	-20.00%	86	76%	113	112	0.89%	94	84%
Total Felonies	168	166	1.20%	143	28%	514	495	3.84%	149	30%
Total Burglaries	93	85	9.41%	29	12%	246	248	-0.81%	22	9%
Misdemeanor Offenses	Current Month	This Month Last Year	% Change Month/Month 2012 - 2011	2012 Cleared Offenses YTD	2012 Clearance RATE YTD	2012 Offenses YTD	2011 Offenses YTD	% Change YTD/YTD 2012 - 2011	2011 Cleared Offenses YTD	2011 Clearance RATE YTD
Misdemeanor Thefts	75	63	19.05%	94	42%	224	197	13.71%	113	57%
All Other Misdemeanors	180	207	-13.04%	379	70%	545	536	1.68%	446	83%
Total Misdemeanors	255	270	-5.56%	473	62%	769	733	4.91%	559	76%
Miscellaneous Offenses	Current Month	This Month Last Year	% Change Month/Month 2012 - 2011	2012 Cleared Offenses YTD	2012 Clearance RATE YTD	2012 Offenses YTD	2011 Offenses YTD	% Change YTD/YTD 2012 - 2011	2011 Cleared Offenses YTD	2011 Clearance RATE YTD
Total Narcotic Offenses	21	25	-16.00%	73	97%	75	72	4.17%	70	97%
Total Alcohol Offenses	36	50	-28.00%	88	89%	99	136	-27.21%	140	103%
Total Domestic Violence	35	33	6.06%	83	95%	87	81	7.41%	78	96%
Total Fraud/Forgery	16	19	-15.79%	25	37%	67	68	-1.47%	16	24%
Total Code Enforcement	0	1	-100.00%	2	100%	2	3	-33.33%	4	133%
	108	128	-15.63%	271	82%	330	360	-8.33%	308	86%
*N.C. - not calculable										
Chief										
'GRAND THEFT CHANGED FROM OVER \$400 TO OVER \$950 01/01/2011						0				

MANTECA POLICE DEPARTMENT
MONTHLY CRIME STATISTICS REPORT
MARCH 2012

Non-Criminal Reports & Services	Current Month	2012 YTD	2011 YTD	% Change YTD/YTD 2012 - 2011
Non-Criminal Reports	129	398	387	2.84%
Service Requests	2538	7618	7877	-3.29%
Written Reports	556	1688	1624	3.94%
Criminal Complaint Requests	122	475	445	6.74%
Warrants Served	92	270	268	0.75%

Property Value	Current Month	2012 YTD	2011 YTD	% Change YTD/YTD 2012 - 2011
Property Stolen	\$225,678.00	\$1,160,009.00	\$1,370,442.00	-15.36%
Property Recovered	\$40,424.00	\$342,810.00	\$492,019.00	-30.33%
% Property Value Recovered	17.91%	29.55%	35.90%	-17.69%

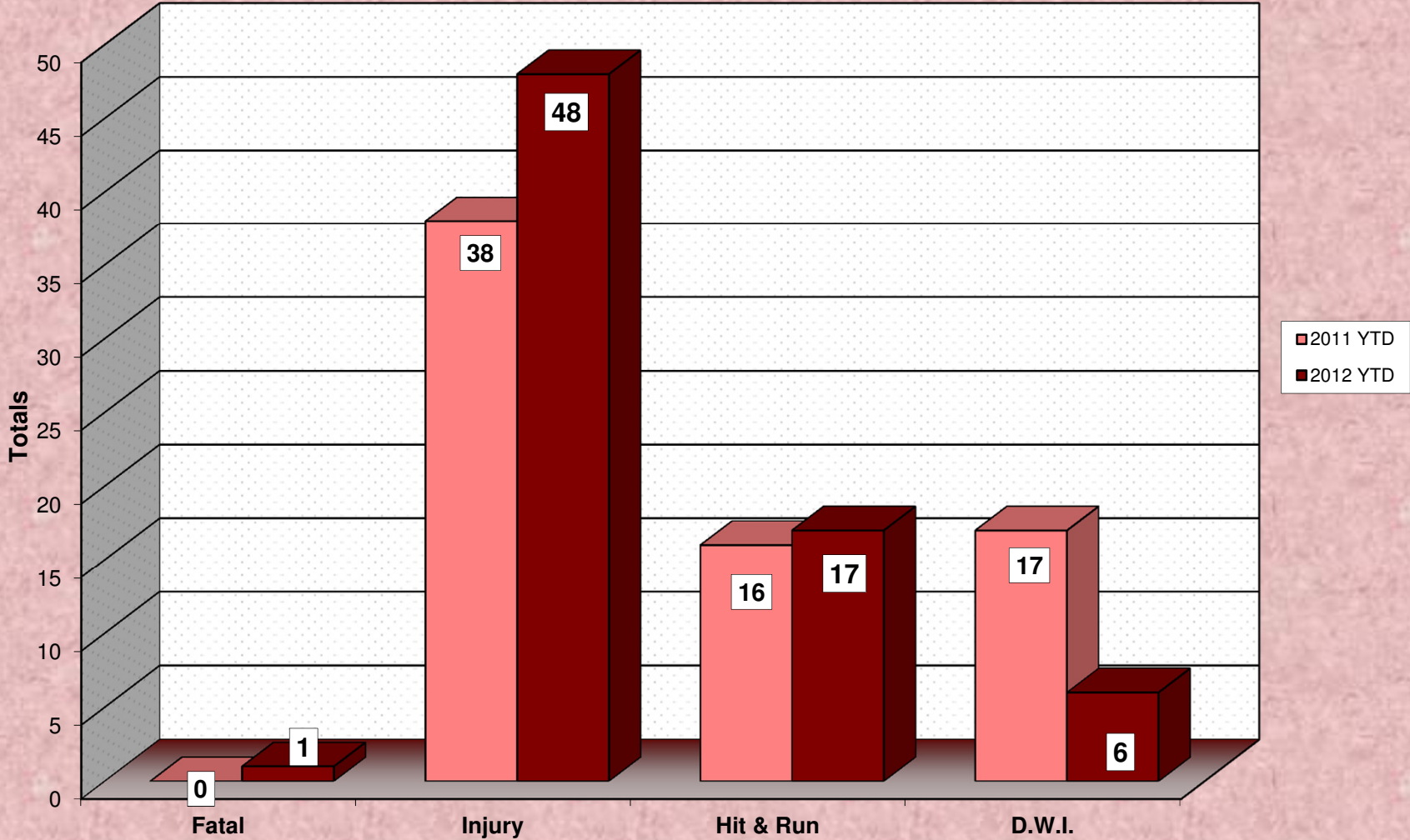
Accidents	Current Month	2012 YTD	2011 YTD	% Change YTD/YTD 2012 - 2011
Total Accidents	55	144	163	-11.66%
Property Damage Only	41	96	125	-23.20%
Fatal	0	1	0	100.00%
Injury	14	48	38	26.32%
Hit & Run	3	17	16	6.25%
D.W.I.	1	6	17	-64.71%

Arrests	Current Month	2012 YTD	2011 YTD	% Change YTD/YTD 2012 - 2011
Adult Arrests	205	589	638	-7.68%
Juvenile Arrests	24	58	72	-19.44%
Total Arrests	229	647	710	-8.87%

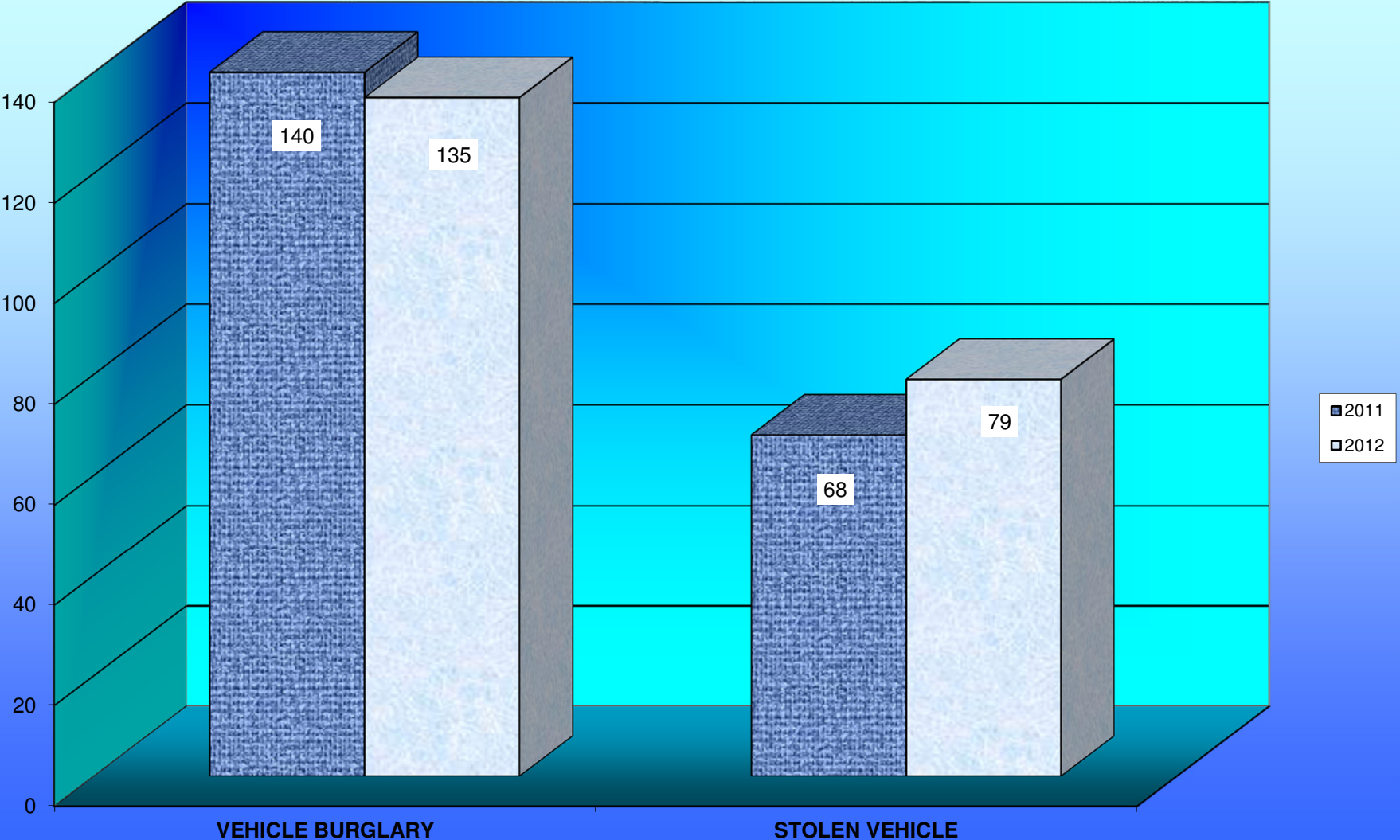
Citations	Current Month	2012 YTD	2011 YTD	% Change YTD/YTD 2012 - 2011
Total Citation Violations	293	1,422	1,366	4.10%
D.W.I Violations	12	31	50	-38.00%
Moving Violations	90	474	370	28.11%
Non-Moving Violations	88	464	397	16.88%
Child Restraint Violations	6	12	6	100.00%
Seat Belt Violations	13	175	94	86.17%
All Other Violations	96	432	513	-15.79%
Parking Violations	21	76	340	-77.65%

Department Actions	Current Month	2012 YTD	2011 YTD	% Change YTD/YTD 2012 - 2011
Pursuits	2	7	4	75.00%
Use of Force	2	4	4	0.00%

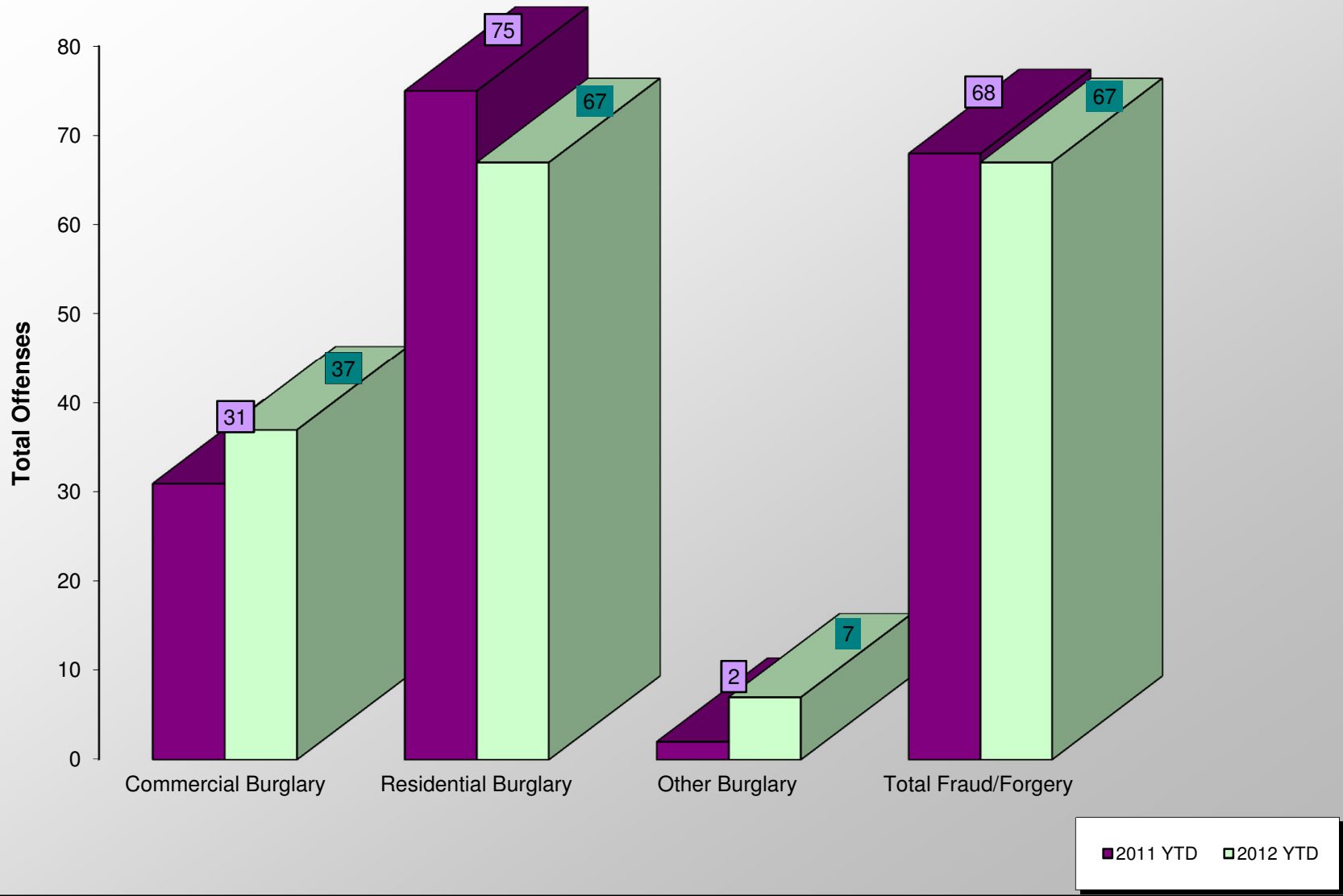
ACCIDENT COMPARISON 2011 - 2012 Year to Date



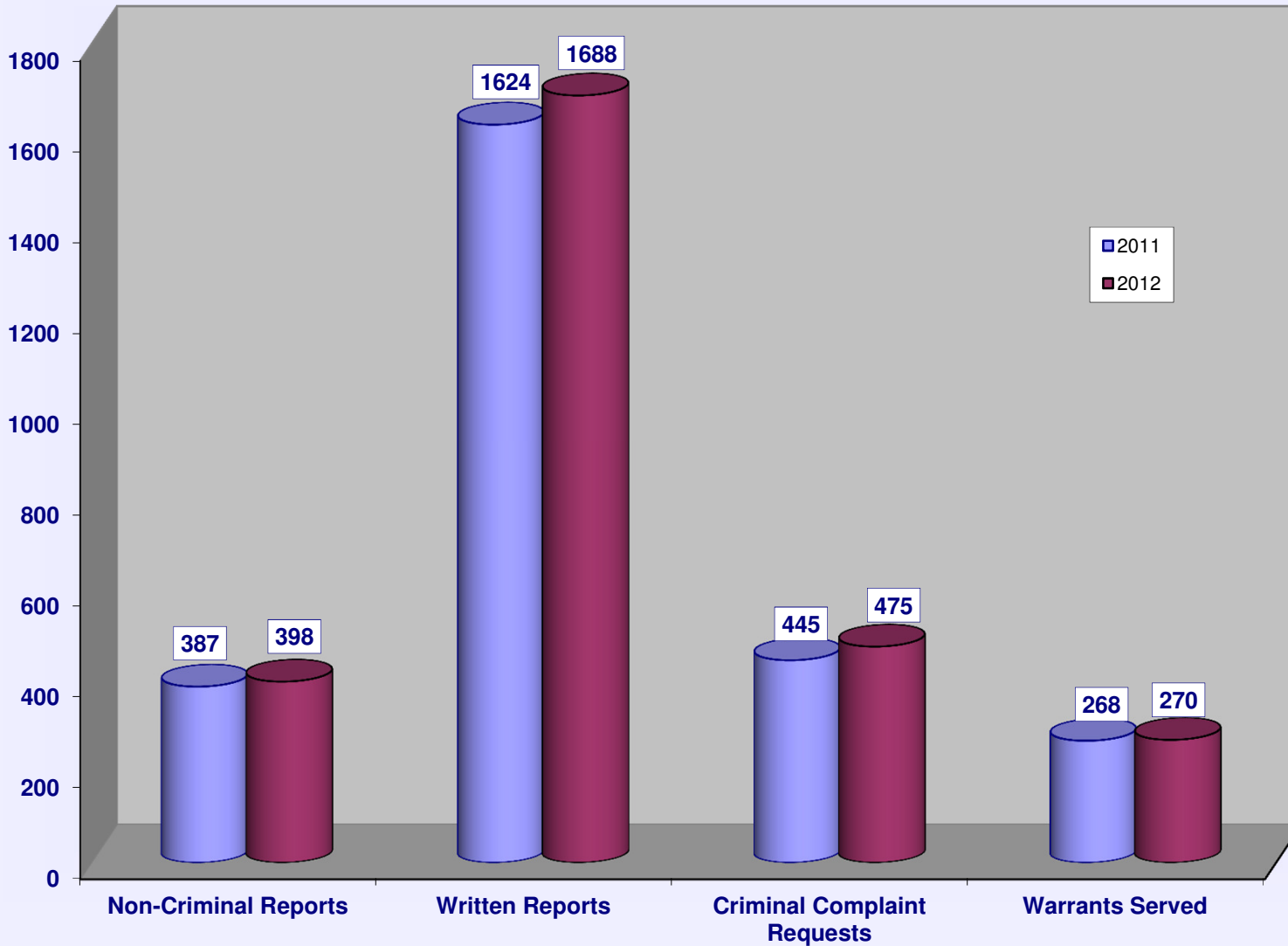
VEHICLE THEFTS



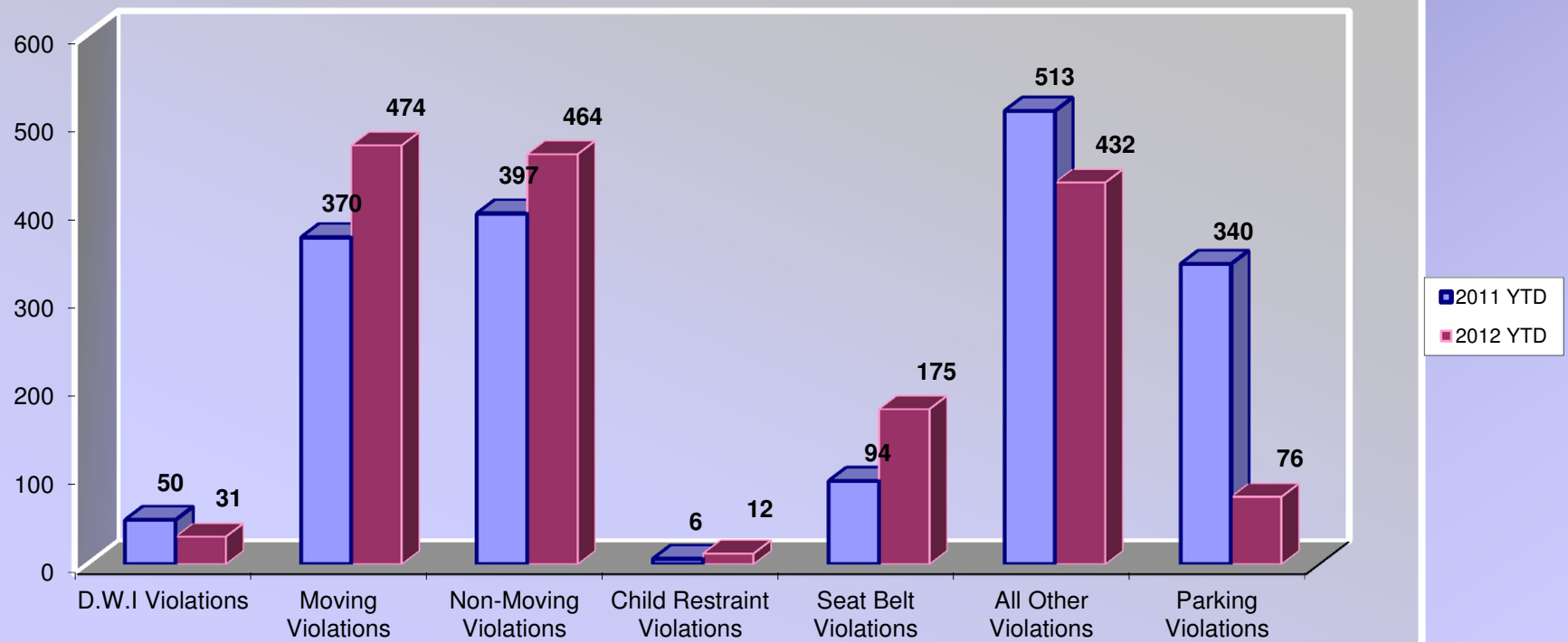
BURGLARIES 2011 - 2012 Year to Date



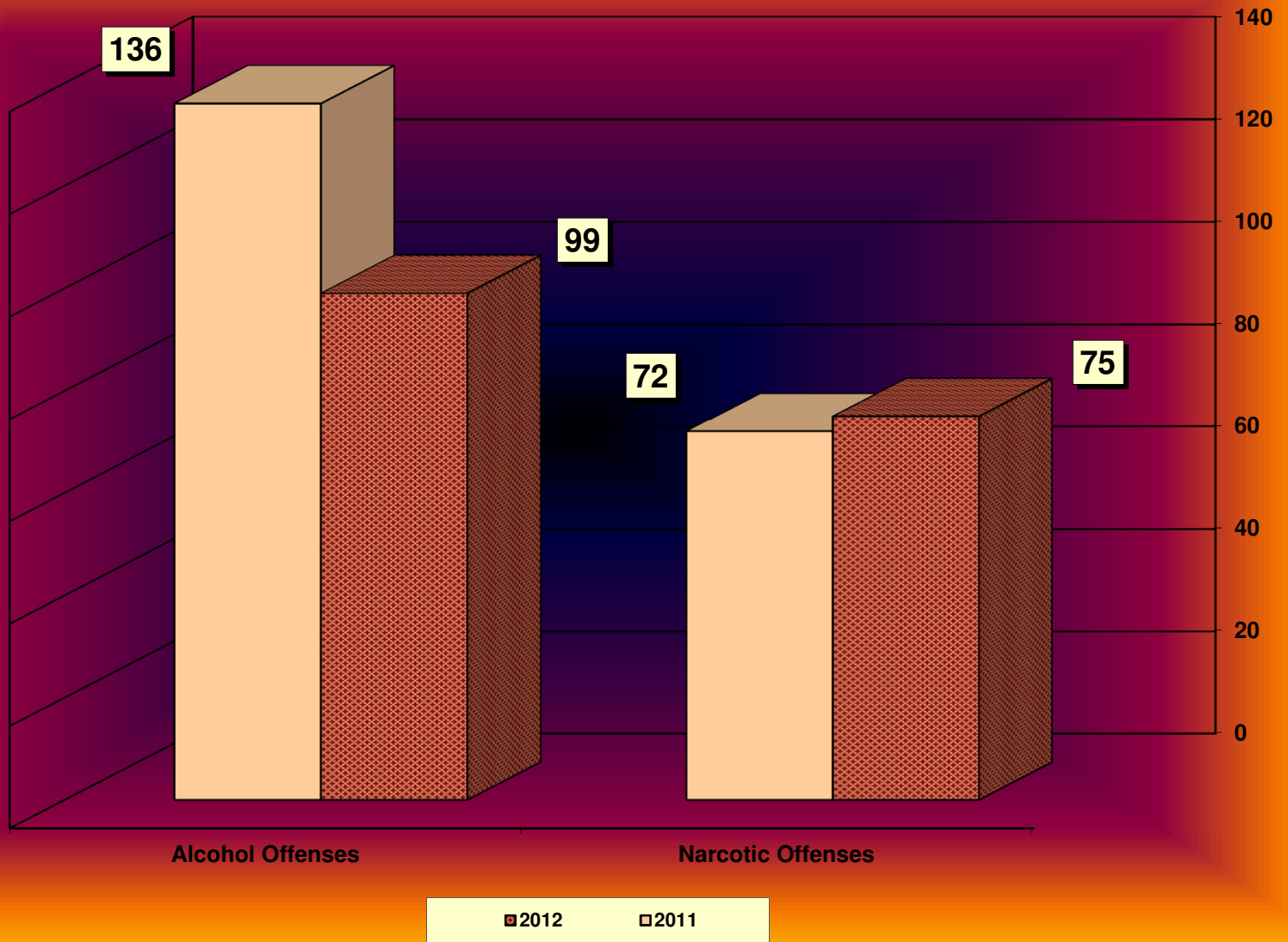
SERVICE & NON-SERVICE REQUESTS 2011 - 2012



TRAFFIC CITATIONS



NARCOTIC / ALCOHOL OFFENSES 2011 - 2012



Department Actions

