

MANTECA POLICE DEPARTMENT  
MONTHLY CRIME STATISTICS REPORT  
MAY 2012

Part One Crime Offenses	Current Month	This Month Last Year	% Change Month/Month 2012- 2011	2012 Cleared Offenses YTD	2012 Clearance RATE YTD	2012 Offenses YTD	2011 Offenses YTD	% Change YTD/YTD 2012 - 2011	2011 Cleared Offenses YTD	2011 Clearance RATE YTD
Homicide	0	0	N/C	0	N/A	0	0	N/C	0	N/A
Rape/Unlawful Interc	3	0	N/A	3	50%	6	4	50.00%	4	100%
Robbery	8	5	60.00%	10	34%	29	24	20.83%	10	42%
Aggravated Assault	8	13	-38.46%	17	39%	44	33	33.33%	19	58%
Commercial Burglary	10	14	-28.57%	32	48%	66	59	11.86%	16	27%
Residential Burglary	17	37	-54.05%	16	14%	113	138	-18.12%	10	7%
Other Burglary	3	3	0.00%	2	15%	13	7	85.71%	1	14%
Auto Burglary	36	69	-47.83%	12	6%	217	259	-16.22%	8	3%
Grand Theft	14	10	40.00%	9	17%	53	52	1.92%	6	12%
Vehicle Theft	32	16	100.00%	14	11%	131	103	27.18%	18	17%
Arson	0	2	-100.00%	1	10%	10	6	66.67%	1	17%
All Other Felonies	37	35	5.71%	150	76%	197	179	10.06%	136	76%
<b>Total Felonies</b>	<b>168</b>	<b>204</b>	<b>-17.65%</b>	<b>266</b>	<b>30%</b>	<b>879</b>	<b>864</b>	<b>1.74%</b>	<b>229</b>	<b>27%</b>
<b>Total Burglaries</b>	<b>66</b>	<b>123</b>	<b>-46.34%</b>	<b>62</b>	<b>15%</b>	<b>409</b>	<b>463</b>	<b>-11.66%</b>	<b>35</b>	<b>8%</b>
Misdemeanor Offenses	Current Month	This Month Last Year	% Change Month/Month 2012 - 2011	2012 Cleared Offenses YTD	2012 Clearance RATE YTD	2012 Offenses YTD	2011 Offenses YTD	% Change YTD/YTD 2012 - 2011	2011 Cleared Offenses YTD	2011 Clearance RATE YTD
Misdemeanor Thefts	94	72	30.56%	184	44%	416	335	24.18%	180	54%
All Other Misdemeanors	188	162	16.05%	654	72%	911	861	5.81%	685	80%
<b>Total Misdemeanors</b>	<b>282</b>	<b>234</b>	<b>20.51%</b>	<b>838</b>	<b>63%</b>	<b>1327</b>	<b>1196</b>	<b>10.95%</b>	<b>865</b>	<b>72%</b>
Miscellaneous Offenses	Current Month	This Month Last Year	% Change Month/Month 2012 - 2011	2012 Cleared Offenses YTD	2012 Clearance RATE YTD	2012 Offenses YTD	2011 Offenses YTD	% Change YTD/YTD 2012 - 2011	2011 Cleared Offenses YTD	2011 Clearance RATE YTD
Total Narcotic Offenses	16	20	-20.00%	109	96%	113	108	4.63%	100	93%
Total Alcohol Offenses	37	30	23.33%	184	94%	196	204	-3.92%	207	101%
Total Domestic Violence	37	36	2.78%	128	83%	154	142	8.45%	126	89%
Total Fraud/Forgery	20	19	5.26%	28	26%	107	113	-5.31%	22	19%
Total Code Enforcement	0	1	-100.00%	2	100%	2	5	-60.00%	6	120%
		<b>106</b>	<b>-100.00%</b>	<b>451</b>	<b>79%</b>	<b>572</b>	<b>572</b>	<b>0.00%</b>	<b>461</b>	<b>81%</b>
*N.C. - not calculable										
Chief										
*GRAND THEFT CHANGED FROM OVER \$400 TO OVER \$950 01/01/2011						0				

MANTECA POLICE DEPARTMENT  
MONTHLY CRIME STATISTICS REPORT  
MAY 2012

Non-Criminal Reports & Services	Current Month	2012 YTD	2011 YTD	% Change YTD/YTD 2012 - 2011
Non-Criminal Reports	147	707	697	1.43%
Service Requests	2,772	13,076	13,338	-1.96%
Written Reports	597	2,921	2,767	5.57%
Criminal Complaint Requests	160	840	736	14.13%
Warrants Served	90	459	424	8.25%

Property Value	Current Month	2012 YTD	2011 YTD	% Change YTD/YTD 2012 - 2011
Property Stolen	\$306,268.00	\$1,774,533.00	\$3,184,191.00	-44.27%
Property Recovered	\$83,245.00	\$528,675.00	\$1,201,224.00	-55.99%
% Property Value Recovered	27.18%	29.79%	37.72%	-21.03%

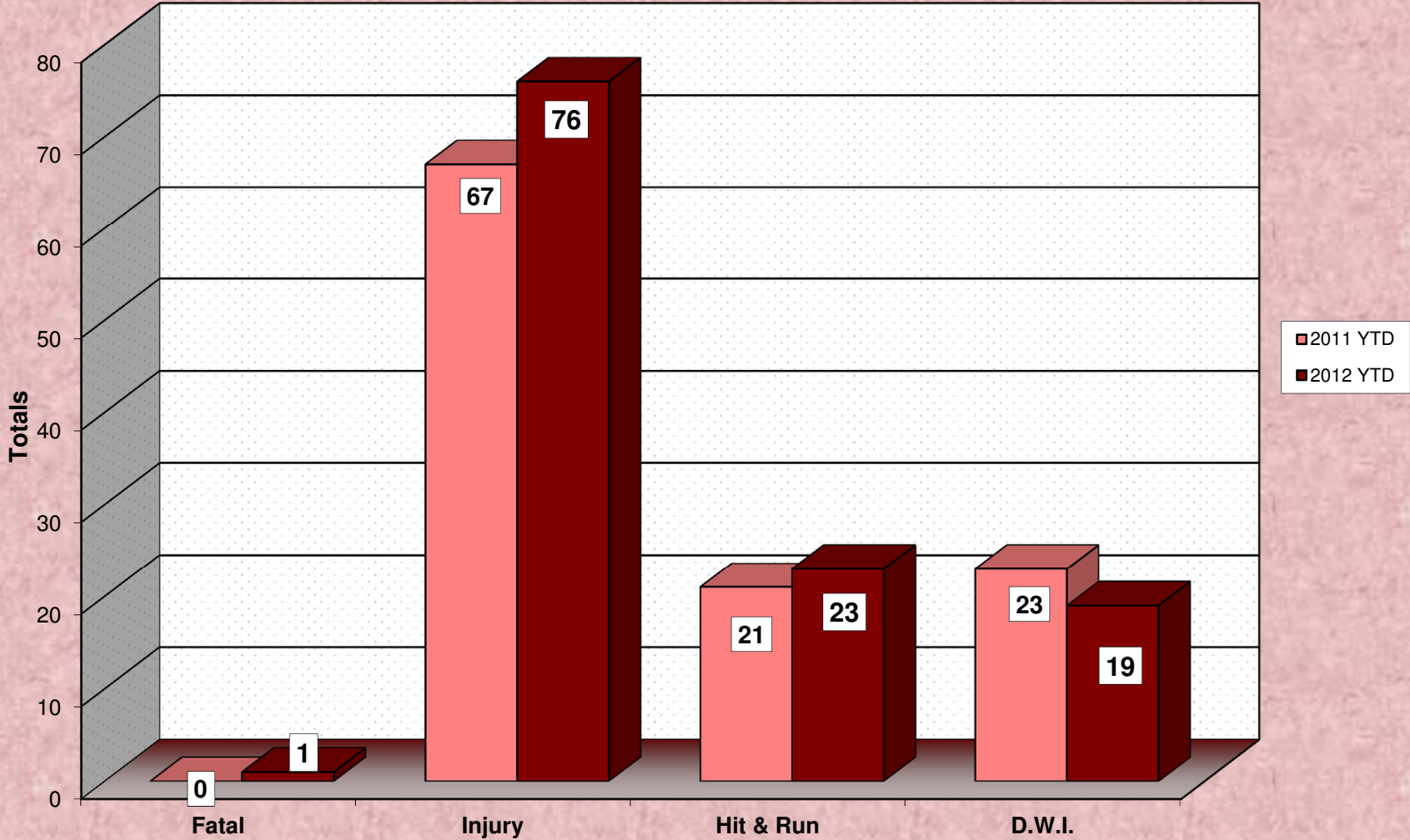
Accidents	Current Month	2012 YTD	2011 YTD	% Change YTD/YTD 2012 - 2011
Total Accidents	49	244	258	-5.43%
Property Damage Only	36	169	192	-11.98%
Fatal	0	1	0	N/A
Injury	13	76	67	13.43%
Hit & Run	4	23	21	9.52%
D.W.I.	1	19	23	-17.39%

Arrests	Current Month	2012 YTD	2011 YTD	% Change YTD/YTD 2012 - 2011
Adult Arrests	197	1,044	1,035	0.87%
Juvenile Arrests	15	89	135	-34.07%
Total Arrests	212	1133	1170	-3.16%

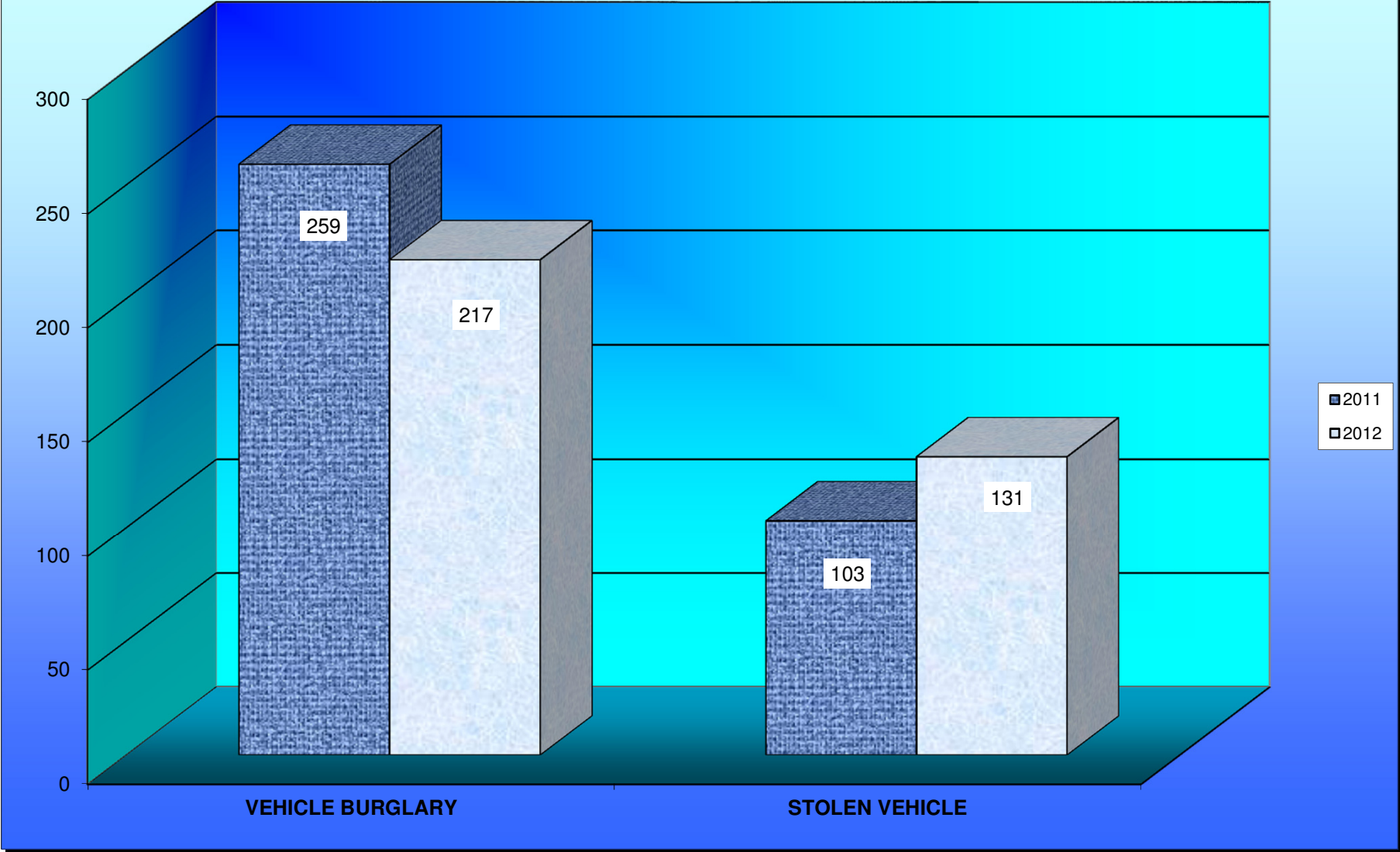
Citations	Current Month	2012 YTD	2011 YTD	% Change YTD/YTD 2012 - 2011
Total Citation Violations	508	2,264	2,361	-4.11%
D.W.I Violations	18	79	72	9.72%
Moving Violations	223	763	781	-2.30%
Non-Moving Violations	100	617	647	-4.64%
Child Restraint Violations	10	26	14	85.71%
Seat Belt Violations	52	237	181	30.94%
All Other Violations	153	742	808	-8.17%
Parking Violations	43	148	506	-70.75%

Department Actions	Current Month	2012 YTD	2011 YTD	% Change YTD/YTD 2012 - 2011
Pursuits	2	9	8	12.50%
Use of Force	0	4	8	-50.00%

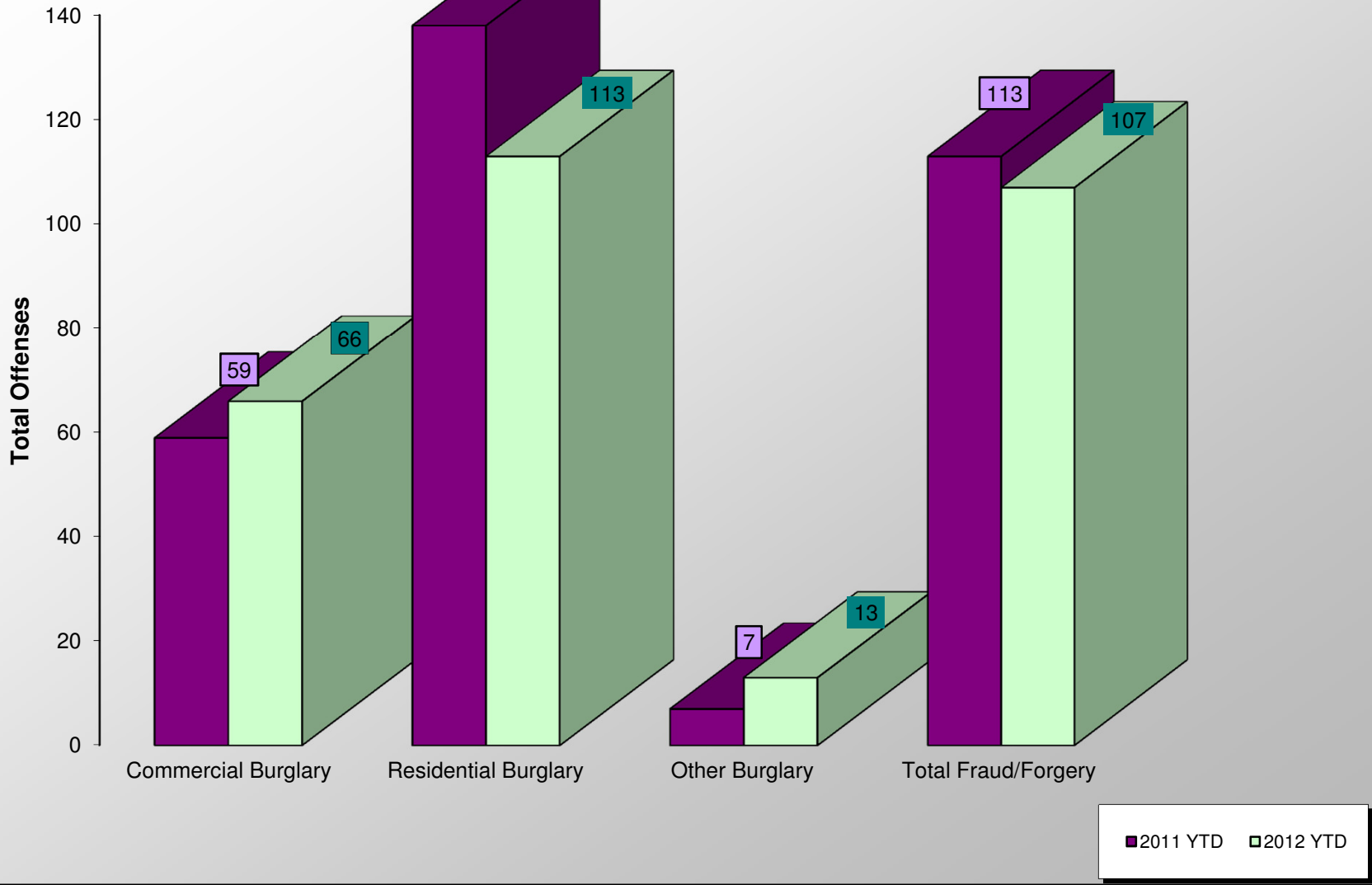
# ACCIDENT COMPARISON 2011 - 2012 Year to Date



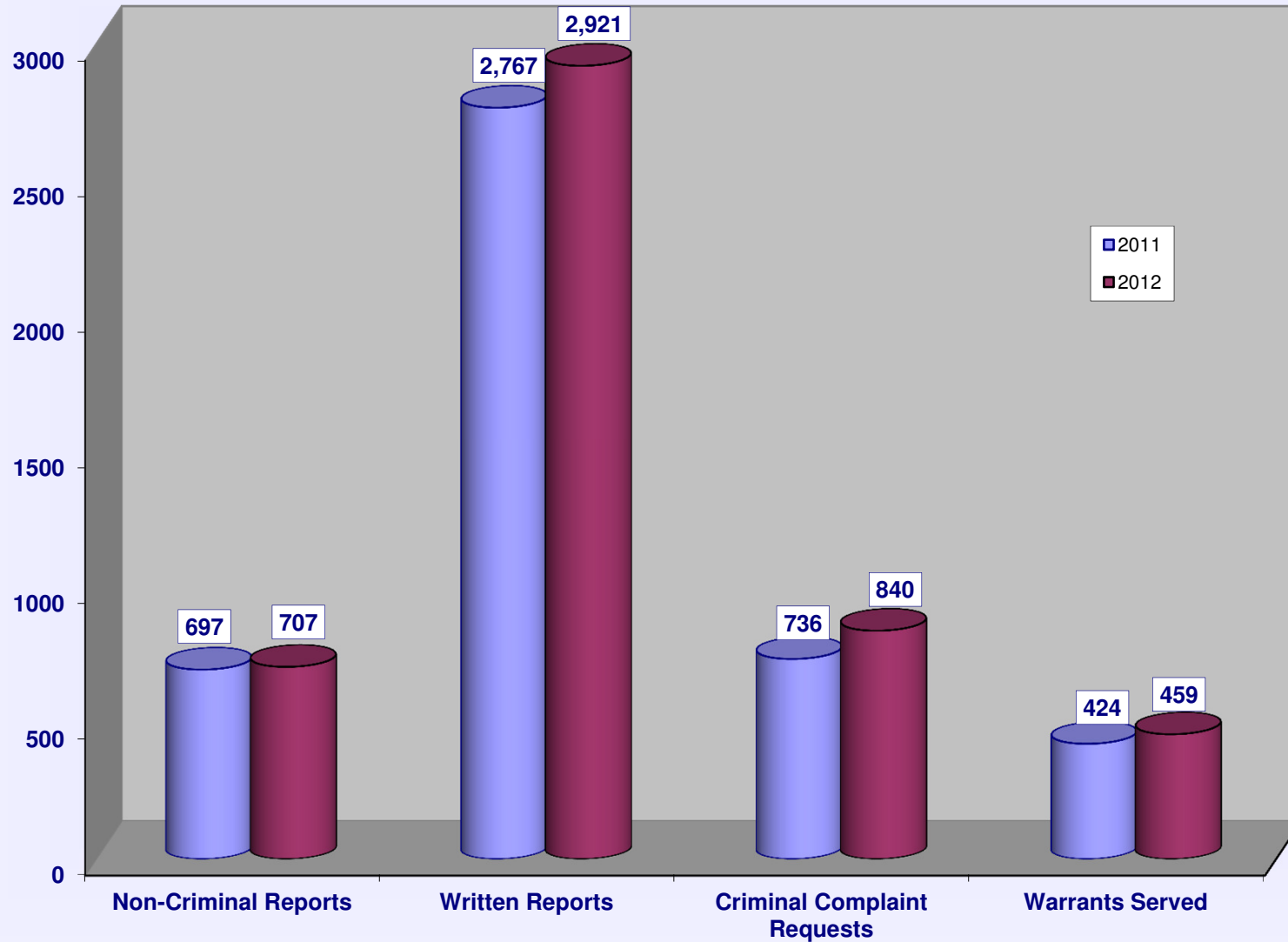
# VEHICLE THEFTS



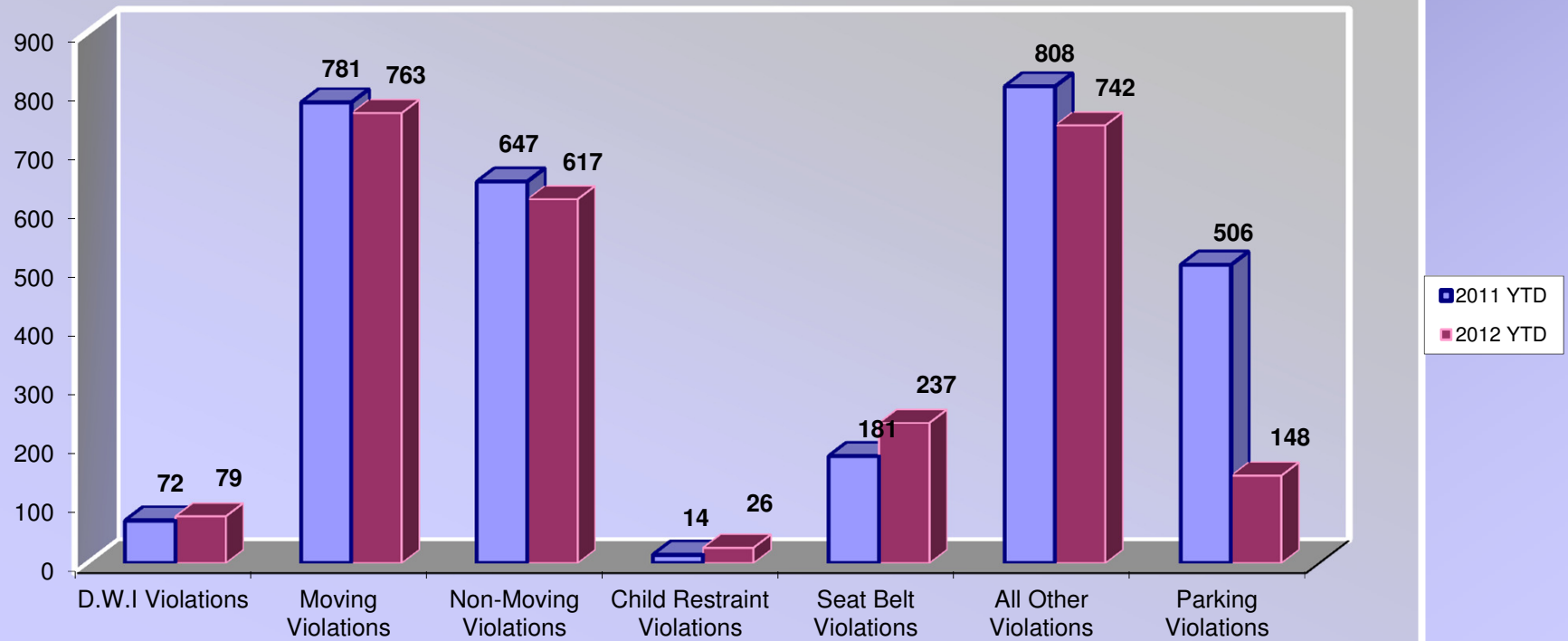
### BURGLARIES 2011 - 2012 Year to Date



### SERVICE & NON-SERVICE REQUESTS 2011 - 2012

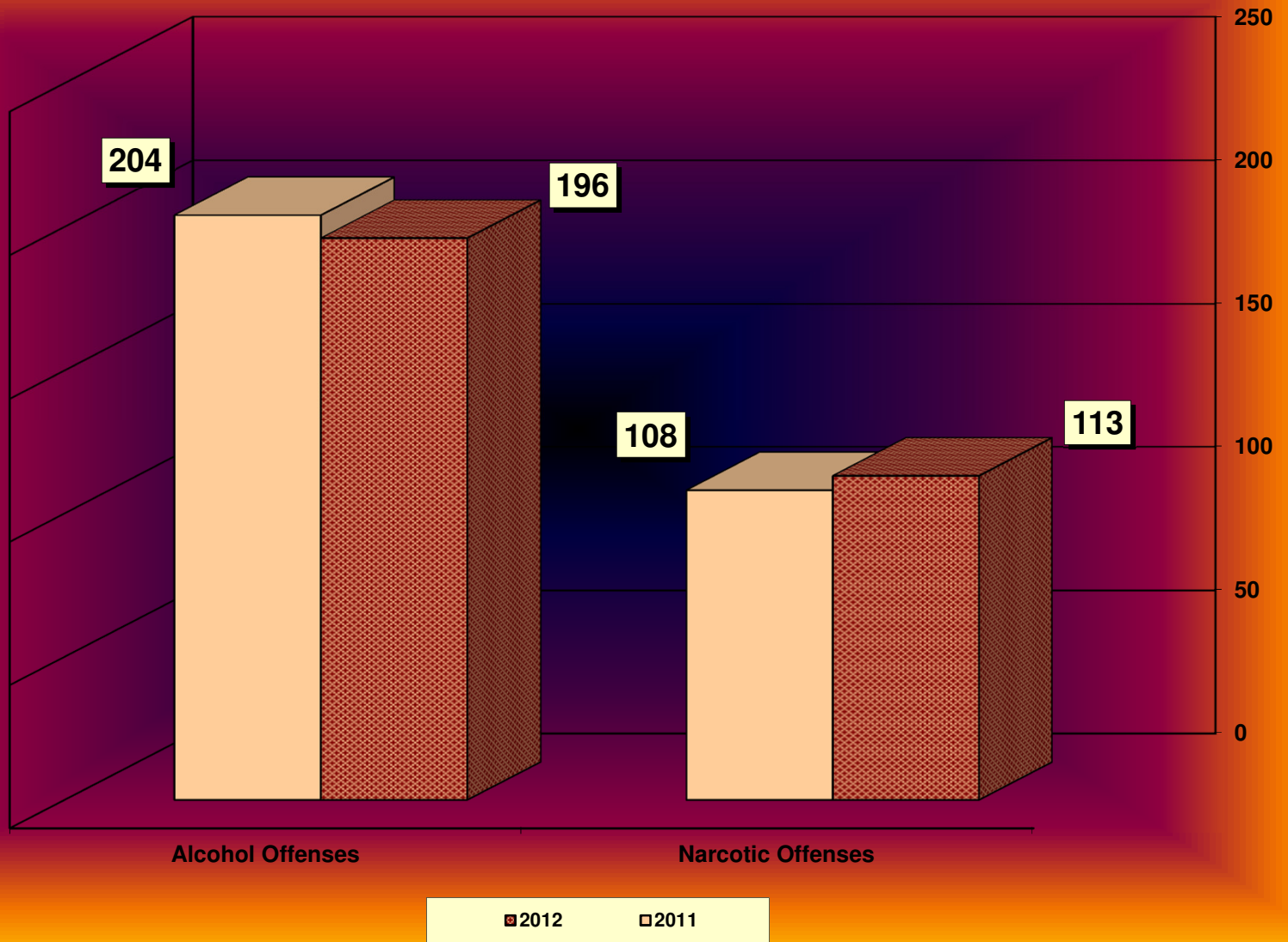


# TRAFFIC CITATIONS





# NARCOTIC / ALCOHOL OFFENSES 2011 - 2012





# Department Actions

