

MANTECA POLICE DEPARTMENT
MONTHLY CRIME STATISTICS REPORT
JUNE 2012

Part One Crime Offenses	Current Month	This Month Last Year	% Change Month/Month 2012- 2011	2012 Cleared Offenses YTD	2012 Clearance RATE YTD	2012 Offenses YTD	2011 Offenses YTD	% Change YTD/YTD 2012 - 2011	2011 Cleared Offenses YTD	2011 Clearance RATE YTD
Homicide	0	1	-100.00%	0	N/A	0	1	-100.00%	1	100%
Rape/Unlawful Interc	4	3	33.33%	3	30%	10	7	42.86%	4	57%
Robbery	11	1	1000.00%	11	28%	40	25	60.00%	10	40%
Aggravated Assault	11	7	57.14%	17	31%	55	40	37.50%	21	53%
Commercial Burglary	17	15	13.33%	36	43%	83	74	12.16%	16	22%
Residential Burglary	14	31	-54.84%	17	13%	127	169	-24.85%	14	8%
Other Burglary	4	4	0.00%	2	12%	17	11	54.55%	1	9%
Auto Burglary	43	55	-21.82%	13	8%	160	314	-49.04%	8	3%
Grand Theft	12	11	9.09%	11	17%	65	63	3.17%	7	11%
Vehicle Theft	46	22	109.09%	15	8%	177	125	41.60%	21	17%
Arson	2	4	-50.00%	1	8%	12	10	20.00%	2	20%
All Other Felonies	41	32	28.13%	180	76%	238	211	12.80%	154	73%
Total Felonies	205	186	10.22%	306	31%	984	1050	-6.29%	259	25%
Total Burglaries	78	105	-25.71%	68	18%	387	568	-31.87%	39	7%
Misdemeanor Offenses	Current Month	This Month Last Year	% Change Month/Month 2012 - 2011	2012 Cleared Offenses YTD	2012 Clearance RATE YTD	2012 Offenses YTD	2011 Offenses YTD	% Change YTD/YTD 2012 - 2011	2011 Cleared Offenses YTD	2011 Clearance RATE YTD
Misdemeanor Thefts	110	66	66.67%	235	45%	526	401	31.17%	215	54%
All Other Misdemeanors	148	188	-21.28%	760	72%	1059	1049	0.95%	820	78%
Total Misdemeanors	258	254	1.57%	995	63%	1585	1450	9.31%	1035	71%
Miscellaneous Offenses	Current Month	This Month Last Year	% Change Month/Month 2012 - 2011	2012 Cleared Offenses YTD	2012 Clearance RATE YTD	2012 Offenses YTD	2011 Offenses YTD	% Change YTD/YTD 2012 - 2011	2011 Cleared Offenses YTD	2011 Clearance RATE YTD
Total Narcotic Offenses	27	17	58.82%	145	104%	140	125	12.00%	116	93%
Total Alcohol Offenses	35	55	-36.36%	218	94%	231	259	-10.81%	262	101%
Total Domestic Violence	26	34	-23.53%	141	78%	180	176	2.27%	146	83%
Total Fraud/Forgery	22	24	-8.33%	34	26%	129	137	-5.84%	23	17%
Total Code Enforcement	0	1	-100.00%	2	100%	2	6	-66.67%	7	117%
	110	131	-16.03%	540	79%	682	703	-2.99%	554	79%
*N.C. - not calculable										
Chief _____										

MANTECA POLICE DEPARTMENT
MONTHLY CRIME STATISTICS REPORT
JUNE 2012

Non-Criminal Reports & Services	Current Month	2012 YTD	2011 YTD	% Change YTD/YTD 2012 - 2011
Non-Criminal Reports	140	847	830	2.05%
Service Requests	3163	16239	16206	0.20%
Written Reports	603	3524	3342	5.45%
Criminal Complaint Requests	185	1025	900	13.89%
Warrants Served	104	563	508	10.83%

Property Value	Current Month	2012 YTD	2011 YTD	% Change YTD/YTD 2012 - 2011
Property Stolen	\$443,653.00	\$2,216,206.00	\$3,434,910.00	-35.48%
Property Recovered	\$135,658.00	\$664,333.00	\$1,318,921.00	-49.63%
% Property Value Recovered	30.58%	29.98%	38.40%	-21.93%

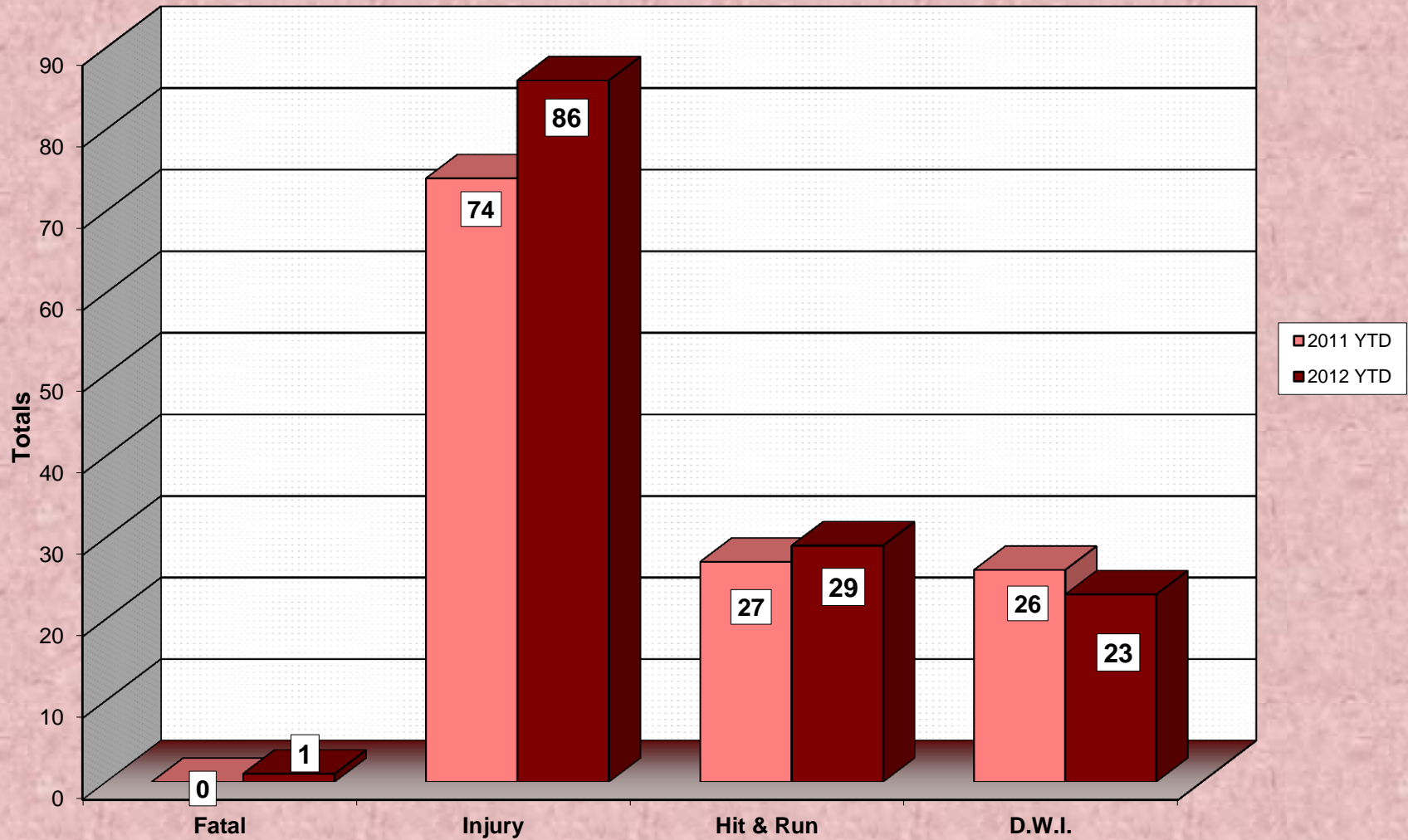
Accidents	Current Month	2012 YTD	2011 YTD	% Change YTD/YTD 2012 - 2011
Total Accidents	57	301	304	-0.99%
Property Damage Only	47	216	231	-6.49%
Fatal	0	1	0	N/A
Injury	10	86	74	16.22%
Hit & Run	6	29	27	7.41%
D.W.I.	4	23	26	-11.54%

Arrests	Current Month	2012 YTD	2011 YTD	% Change YTD/YTD 2012 - 2011
Adult Arrests	235	1279	1233	3.73%
Juvenile Arrests	14	103	159	-35.22%
Total Arrests	249	1382	1392	-0.72%

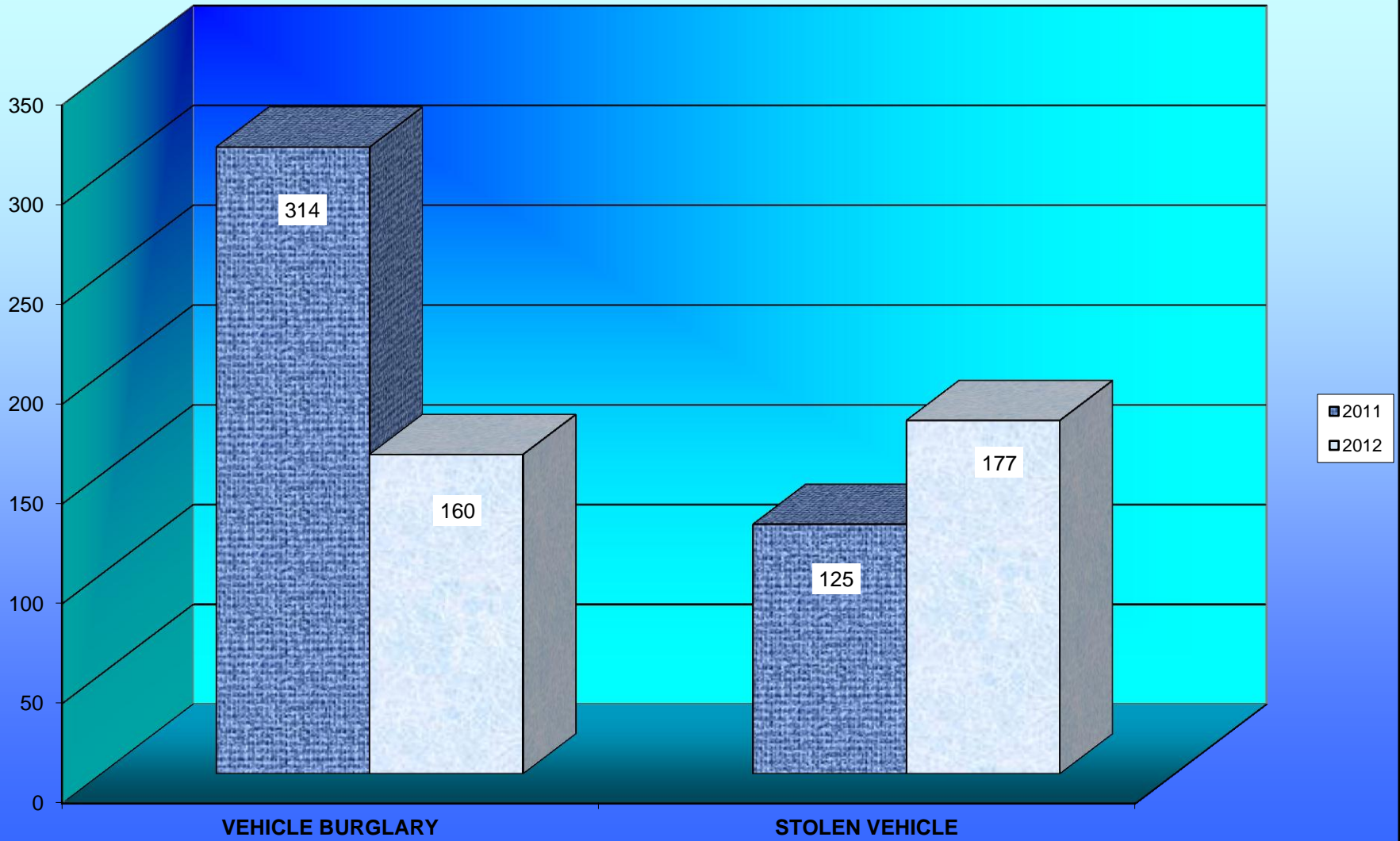
Citations	Current Month	2012 YTD	2011 YTD	% Change YTD/YTD 2012 - 2011
Total Citation Violations	444	2,708	2,659	1.84%
D.W.I Violations	18	97	87	11.49%
Moving Violations	117	880	849	3.65%
Non-Moving Violations	104	721	711	1.41%
Child Restraint Violations	3	29	15	93.33%
Seat Belt Violations	21	258	196	31.63%
All Other Violations	192	934	945	-1.16%
Parking Violations	21	169	536	-68.47%

Department Actions	Current Month	2012 YTD	2011 YTD	% Change YTD/YTD 2012 - 2011
Pursuits	1	10	10	0.00%
Use of Force	3	7	10	-30.00%

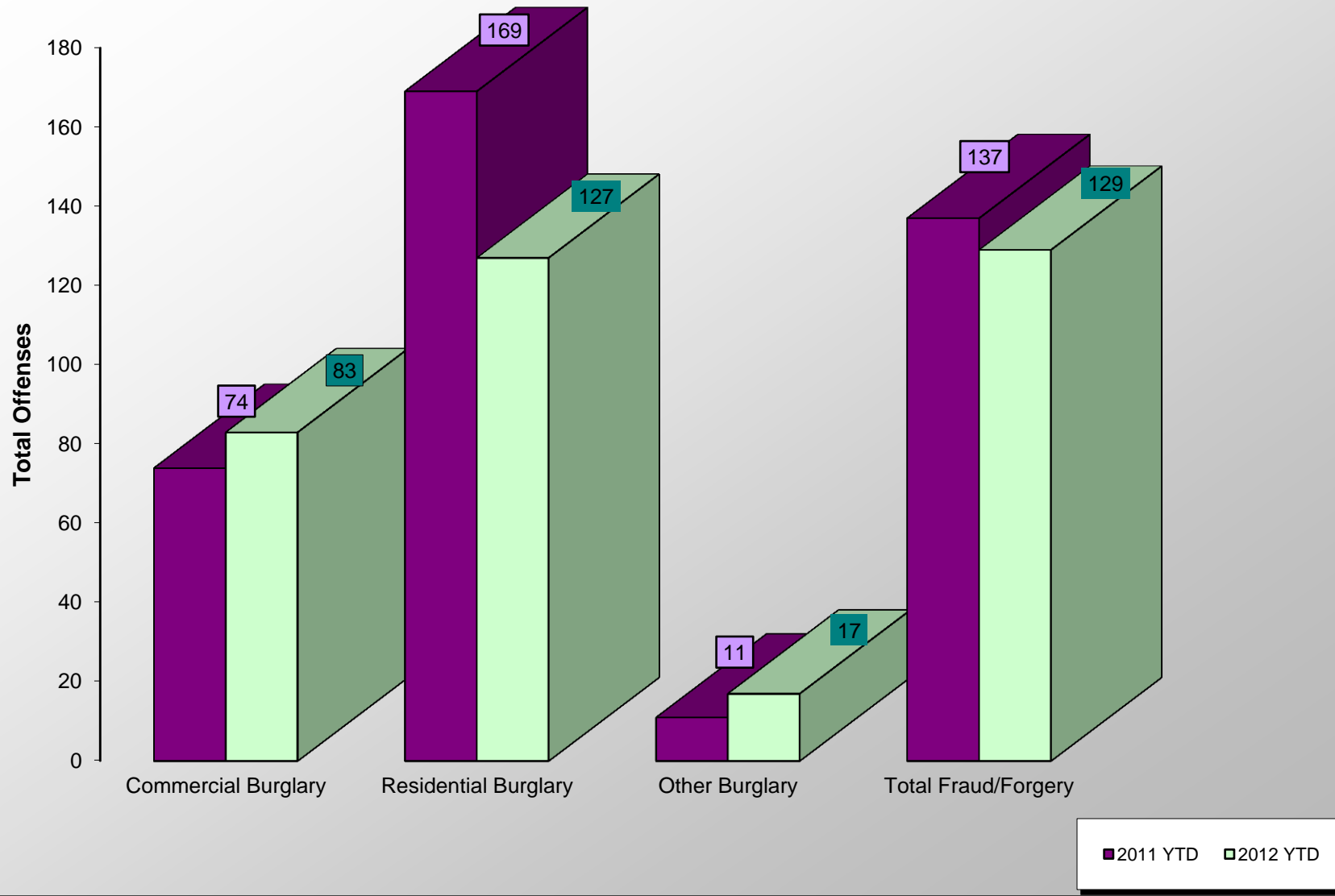
ACCIDENT COMPARISON 2011 - 2012 Year to Date



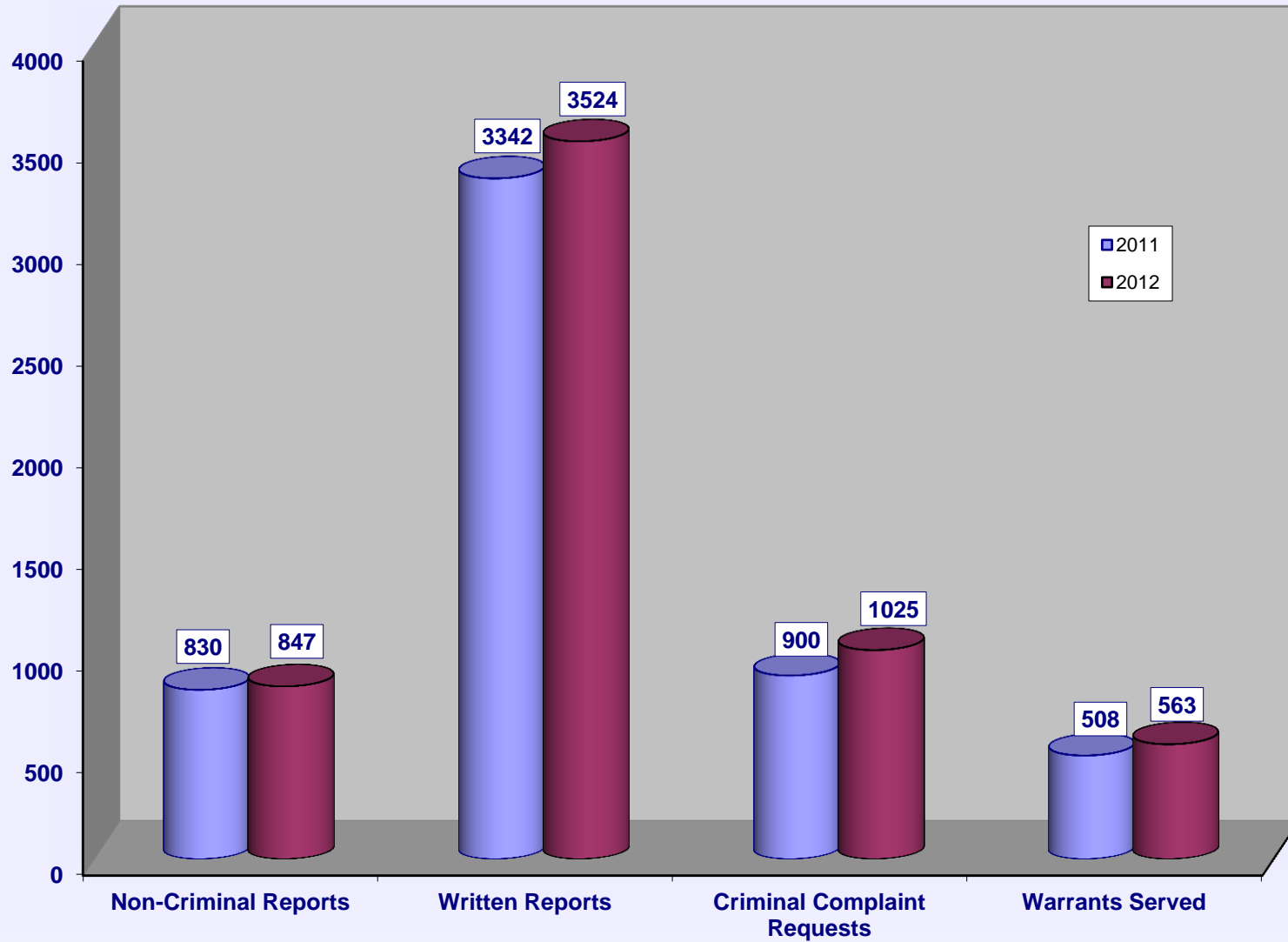
VEHICLE THEFTS



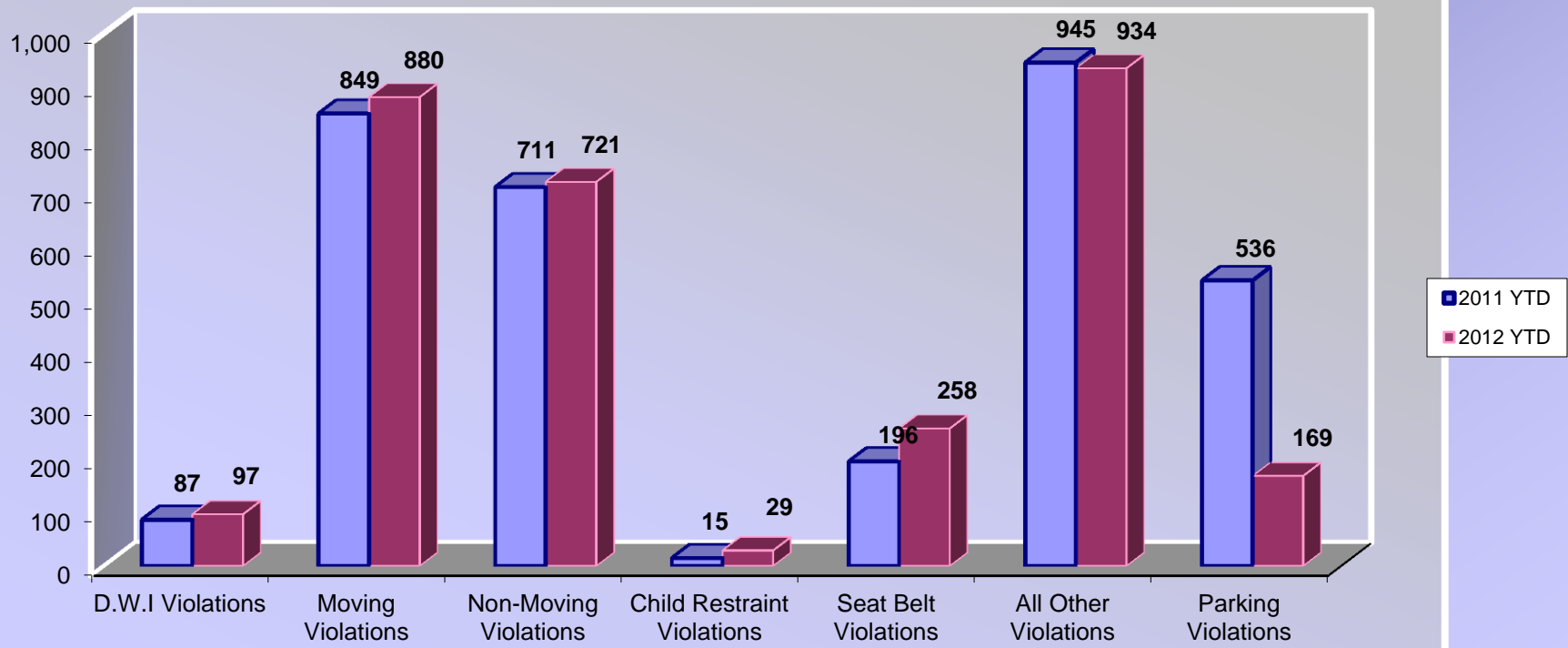
BURGLARIES 2011 - 2012 Year to Date



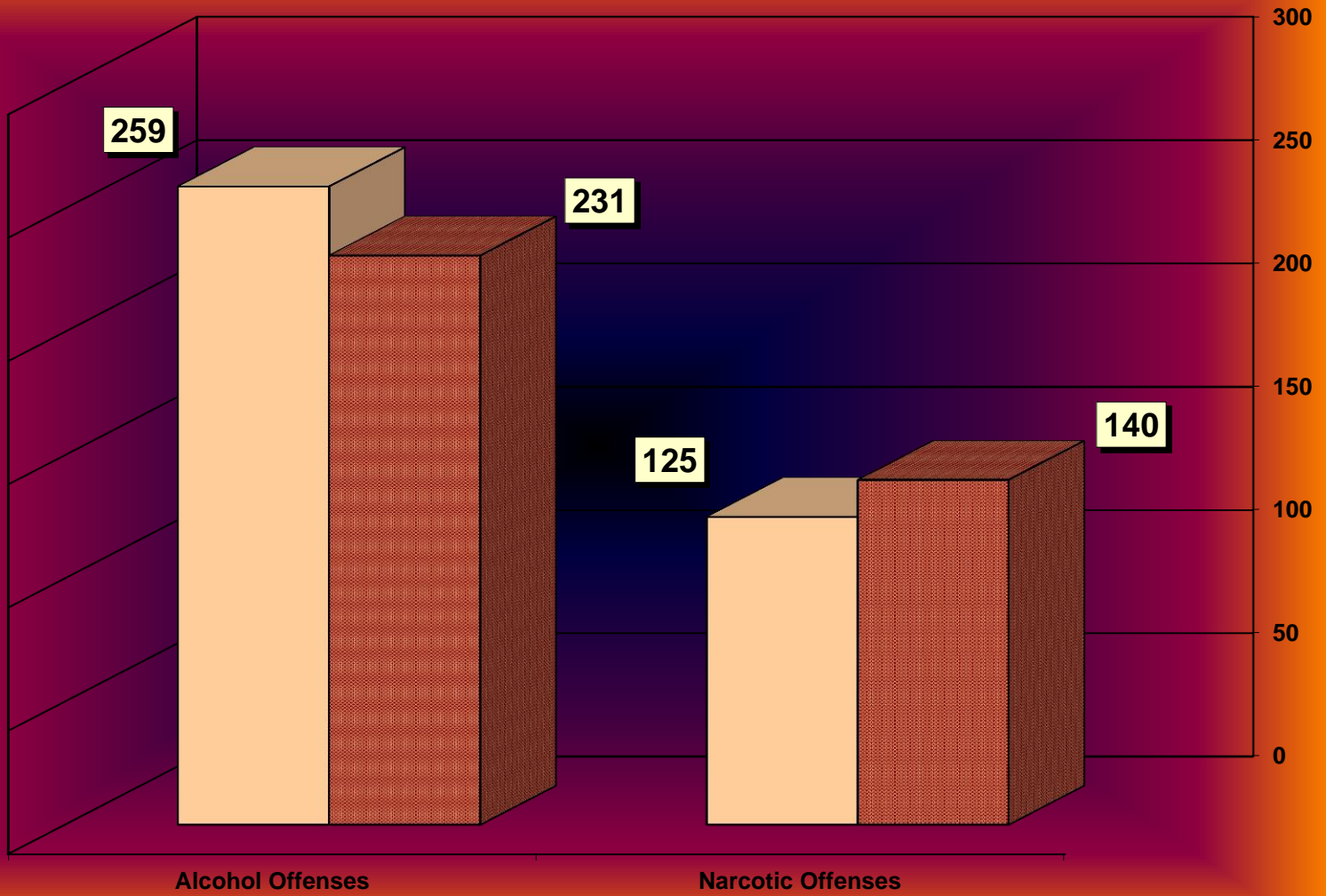
SERVICE & NON-SERVICE REQUESTS 2011 - 2012



TRAFFIC CITATIONS



NARCOTIC / ALCOHOL OFFENSES 2011 - 2012



■ 2012 □ 2011

Department Actions

