

MANTECA POLICE DEPARTMENT  
MONTHLY CRIME STATISTICS REPORT  
APRIL 2015

Part One Crime Offenses	Current Month	This Month Last Year	% Change Month/Month 2015- 2014	2015 Cleared Offenses YTD	2015 Clearance RATE YTD	2015 Offenses YTD	2014 Offenses YTD	% Change YTD/YTD 2015 - 2014	2014 Cleared Offenses YTD	2014 Clearance RATE YTD
Homicide	0	0	N/C	0	0%	1	2	-50.00%	1	50%
Rape/Unlawful Interc	1	1	0.00%	1	14%	7	4	75.00%	0	0%
Robbery	4	4	0.00%	9	38%	24	32	-25.00%	9	28%
Aggravated Assault	6	8	-25.00%	12	52%	23	28	-17.86%	11	39%
Commercial Burglary	4	6	-33.33%	4	7%	58	36	61.11%	2	6%
Residential Burglary	13	16	-18.75%	7	10%	67	59	13.56%	3	5%
Other Burglary	4	1	300.00%	0	0%	15	8	87.50%	1	13%
Auto Burglary	29	46	-36.96%	1	1%	111	152	-26.97%	5	3%
Grand Theft	13	14	-7.14%	4	6%	63	53	18.87%	2	4%
Vehicle Theft	23	33	-30.30%	15	15%	97	115	-15.65%	19	17%
Arson	3	0	N.C.	0	0%	11	4	175.00%	1	25%
All Other Felonies	31	36	-13.89%	98	74%	133	143	-6.99%	115	80%
<b>Total Felonies</b>	<b>131</b>	<b>165</b>	<b>-20.61%</b>	<b>151</b>	<b>25%</b>	<b>610</b>	<b>636</b>	<b>-4.09%</b>	<b>169</b>	<b>27%</b>
<b>Total Burglaries</b>	<b>50</b>	<b>69</b>	<b>-27.54%</b>	<b>12</b>	<b>5%</b>	<b>251</b>	<b>255</b>	<b>-1.57%</b>	<b>11</b>	<b>4%</b>
Misdemeanor Offenses	Current Month	This Month Last Year	% Change Month/Month 2015 - 2014	2015 Cleared Offenses YTD	2015 Clearance RATE YTD	2015 Offenses YTD	2014 Offenses YTD	% Change YTD/YTD 2015 - 2014	2014 Cleared Offenses YTD	2014 Clearance RATE YTD
Misdemeanor Thefts	79	71	11.27%	88	26%	345	358	-3.63%	129	36%
All Other Misdemeanors	159	178	-10.67%	487	72%	676	774	-12.66%	471	61%
<b>Total Misdemeanors</b>	<b>238</b>	<b>249</b>	<b>-4.42%</b>	<b>575</b>	<b>56%</b>	<b>1021</b>	<b>1132</b>	<b>-9.81%</b>	<b>600</b>	<b>53%</b>
Miscellaneous Offenses	Current Month	This Month Last Year	% Change Month/Month 2015 - 2014	2015 Cleared Offenses YTD	2015 Clearance RATE YTD	2015 Offenses YTD	2014 Offenses YTD	% Change YTD/YTD 2015 - 2014	2014 Cleared Offenses YTD	2014 Clearance RATE YTD
Total Narcotic Offenses	17	16	6.25%	69	96%	72	92	-21.74%	84	91%
Total Alcohol Offenses	26	39	-33.33%	118	99%	119	129	-7.75%	123	95%
Total Domestic Violence	19	18	5.56%	107	108%	99	82	20.73%	76	93%
Total Fraud/Forgery	35	36	-2.78%	19	14%	134	194	-30.93%	19	10%
Total Vehicle Abatements	2	1	100.00%	6	150%	4	8	-50.00%	10	125%
	<b>99</b>	<b>110</b>	<b>-10.00%</b>	<b>319</b>	<b>75%</b>	<b>428</b>	<b>505</b>	<b>-15.25%</b>	<b>312</b>	<b>62%</b>
*N.C. - not calculable	*N/C - no change									
Chief _____										
						0				

MANTECA POLICE DEPARTMENT  
MONTHLY CRIME STATISTICS REPORT  
APRIL 2015

Non-Criminal Reports & Services	Current Month	2015 YTD	2014 YTD	% Change YTD/YTD 2015 - 2014
Non-Criminal Reports	167	642	570	12.63%
Service Requests	2965	11552	10532	9.68%
Written Reports	524	2240	2337	-4.15%
Criminal Complaint Requests	122	550	590	-6.78%
Warrants Served	105	406	391	3.84%

Property Value	Current Month	2015 YTD	2014 YTD	% Change YTD/YTD 2015 - 2014
Property Stolen	\$259,184.00	\$1,498,299.00	\$1,304,048.00	14.90%
Property Recovered	\$100,605.00	\$790,985.00	\$595,326.00	32.87%
% Property Value Recovered	38.82%	52.79%	45.65%	15.64%

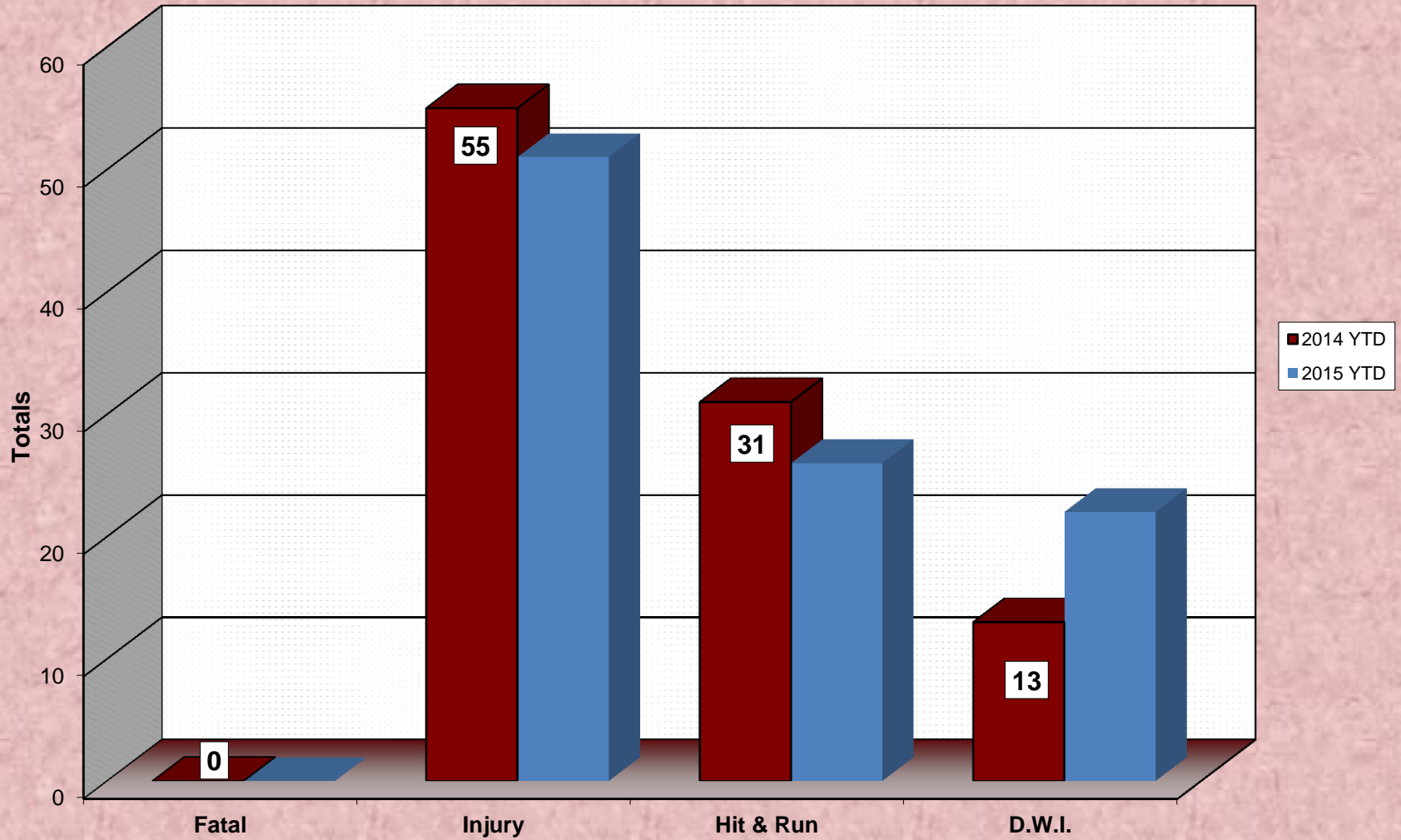
Accidents	Current Month	2015 YTD	2014 YTD	% Change YTD/YTD 2015 - 2014
Total Accidents	75	276	267	3.37%
Property Damage Only	60	224	212	5.66%
Fatal	0	0	0	N/C
Injury	15	51	55	-7.27%
Hit & Run	4	26	31	-16.13%
D.W.I.	5	22	13	69.23%

Arrests	Current Month	2015 YTD	2014 YTD	% Change YTD/YTD 2015 - 2014
Adult Arrests	151	670	735	-8.84%
Juvenile Arrests	9	38	53	-28.30%
Total Arrests	160	708	788	-10.15%

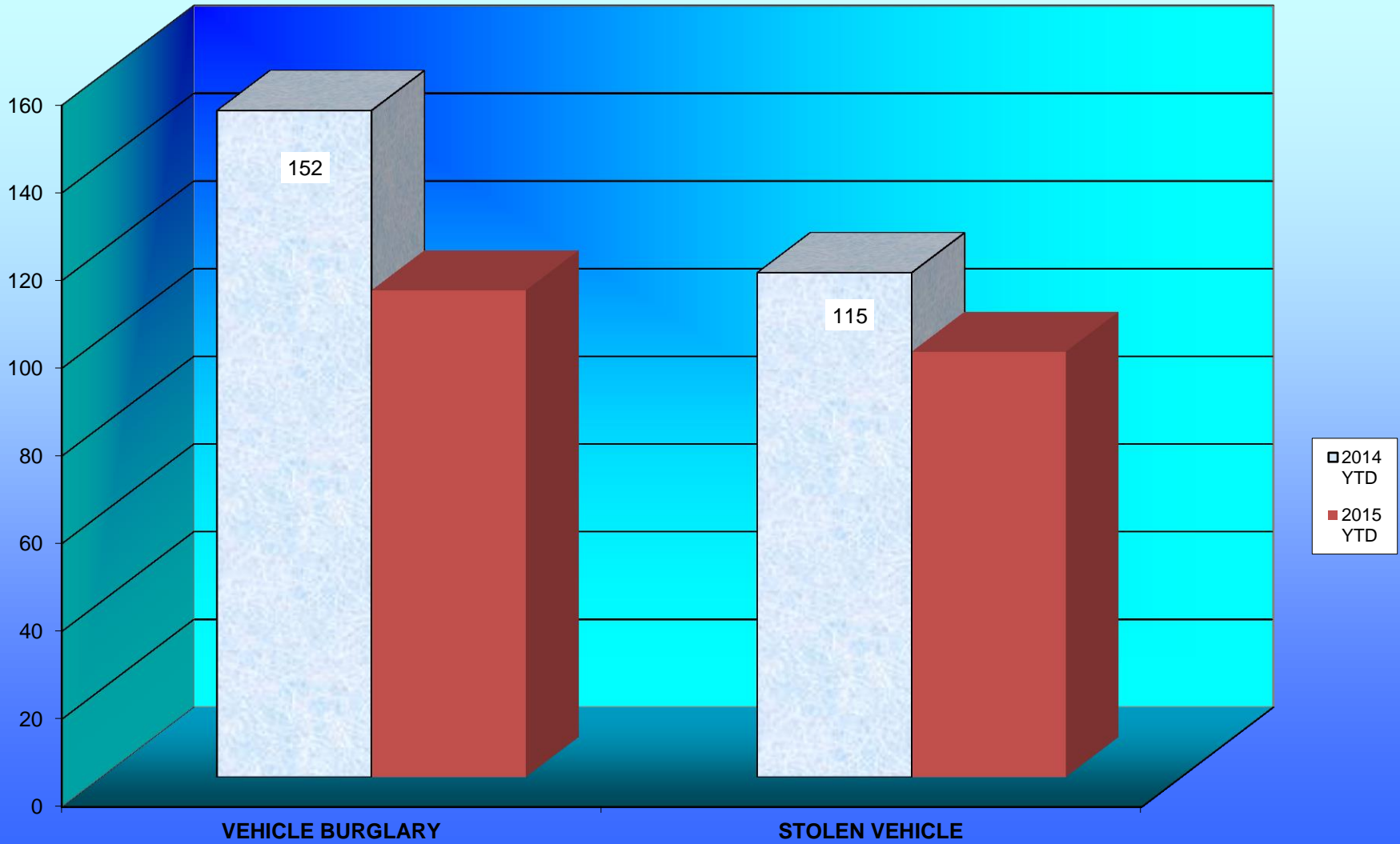
Citations	Current Month	2015 YTD	2014 YTD	% Change YTD/YTD 2015 - 2014
Total Citation Violations	403	1,635	1,638	-0.18%
D.W.I Violations	10	55	43	27.91%
Moving Violations	200	643	389	65.30%
Non-Moving Violations	56	285	258	10.47%
Child Restraint Violations	0	4	6	-33.33%
Seat Belt Violations	15	48	52	-7.69%
All Other Violations	128	598	737	-18.86%
Parking Violations	69	221	179	23.46%

Department Actions	Current Month	2015 YTD	2014 YTD	% Change YTD/YTD 2015 - 2014
Pursuits	3	12	11	9.09%
Use of Force	1	7	15	-53.33%

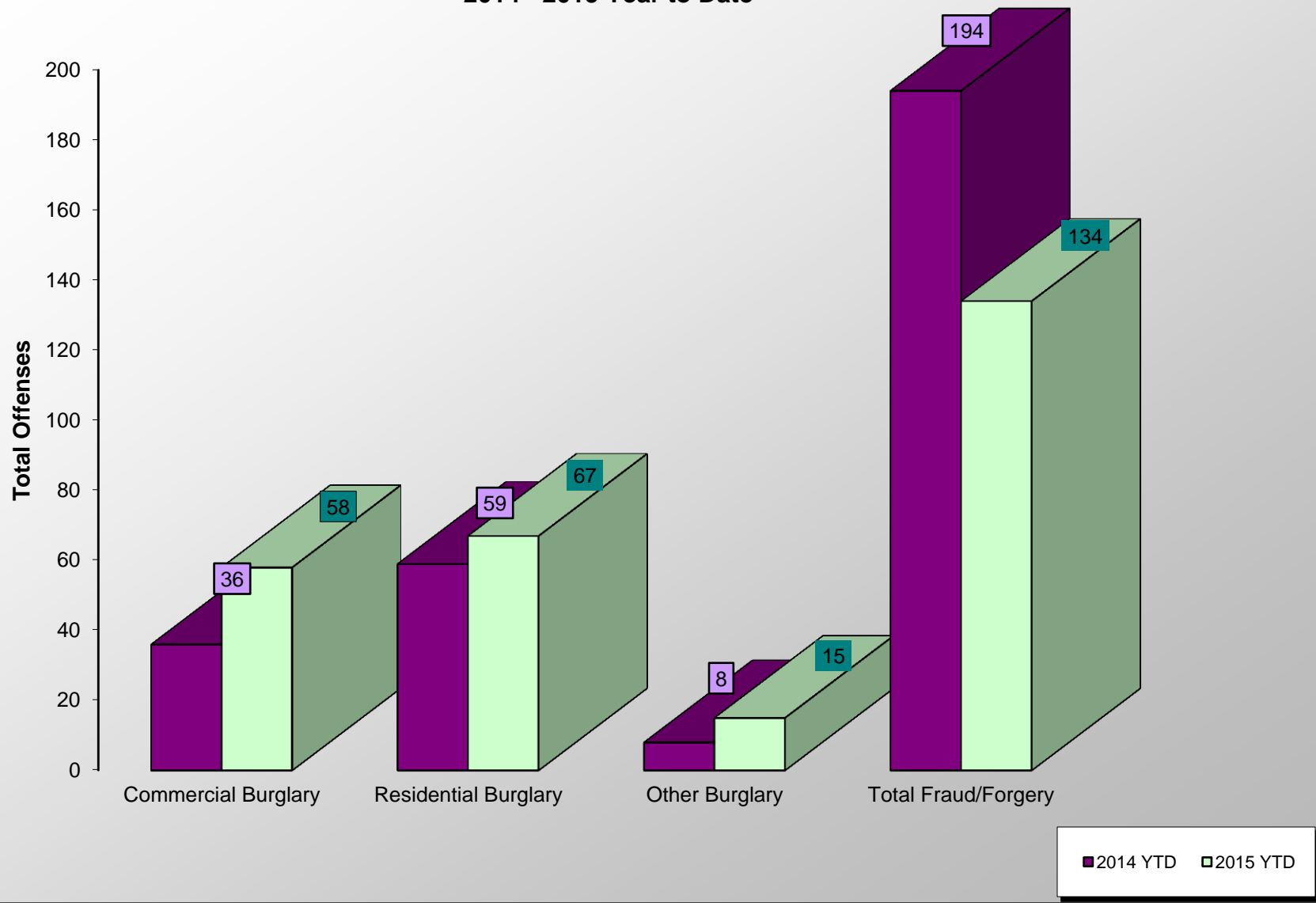
### ACCIDENT COMPARISON 2014 - 2015 Year to Date



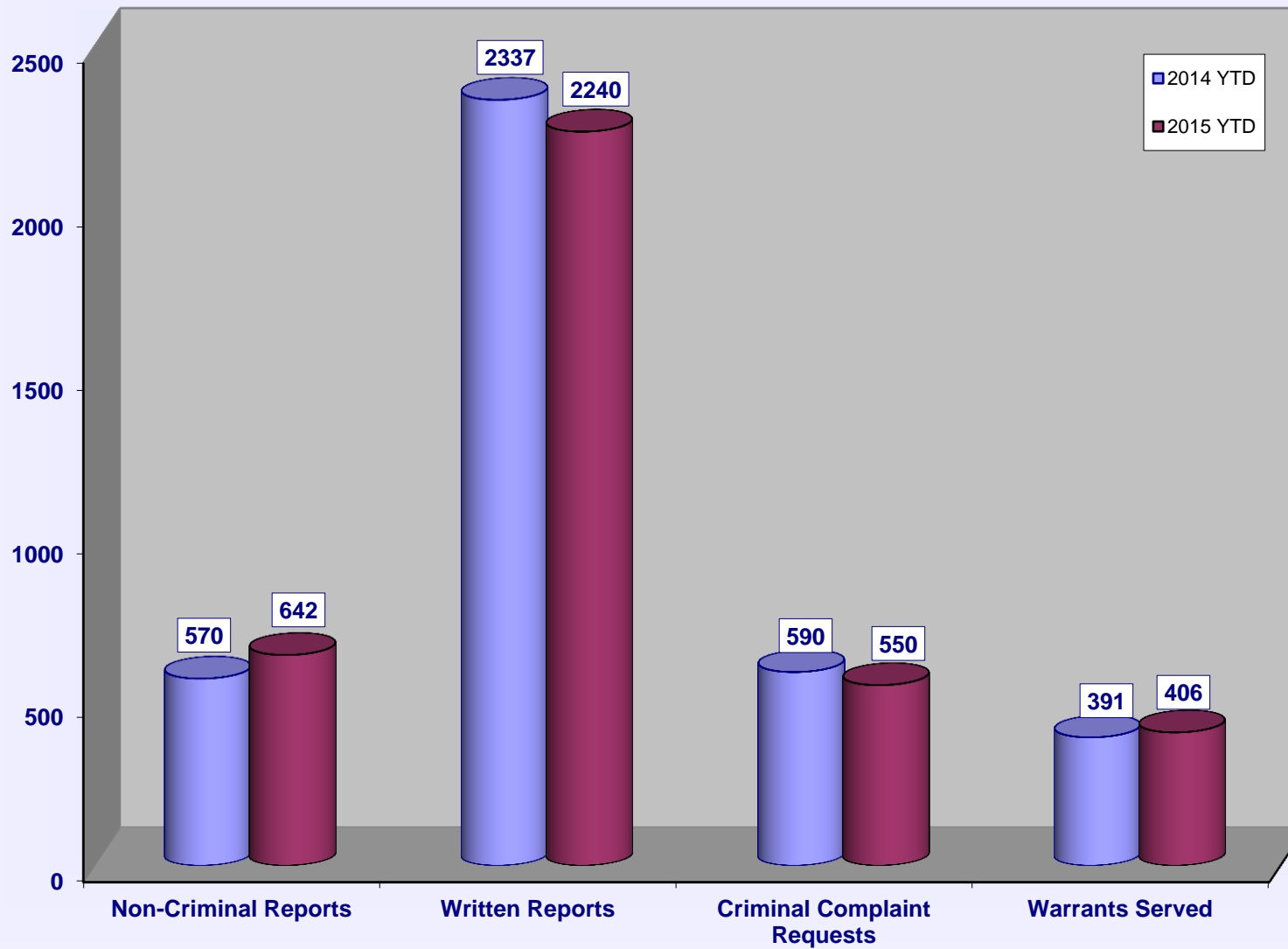
# VEHICLE THEFTS



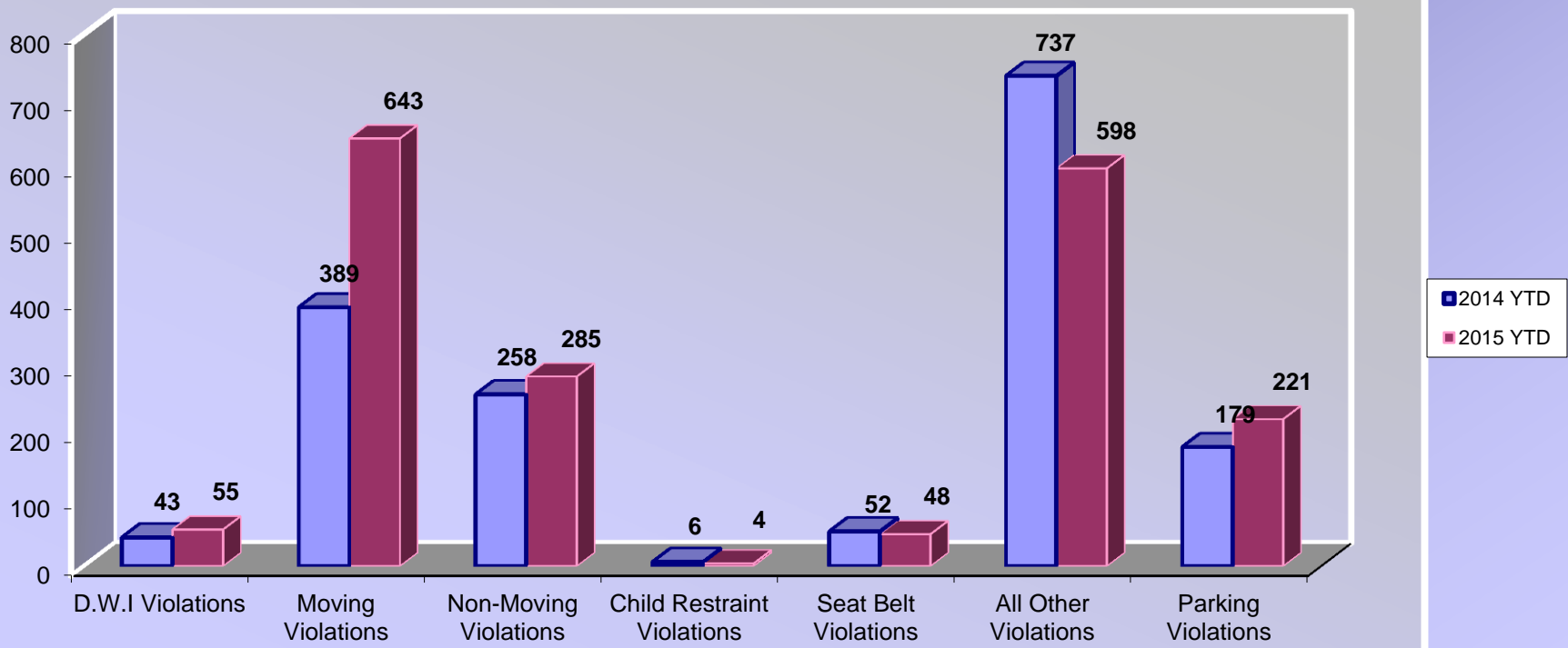
### BURGLARIES 2014 - 2015 Year to Date



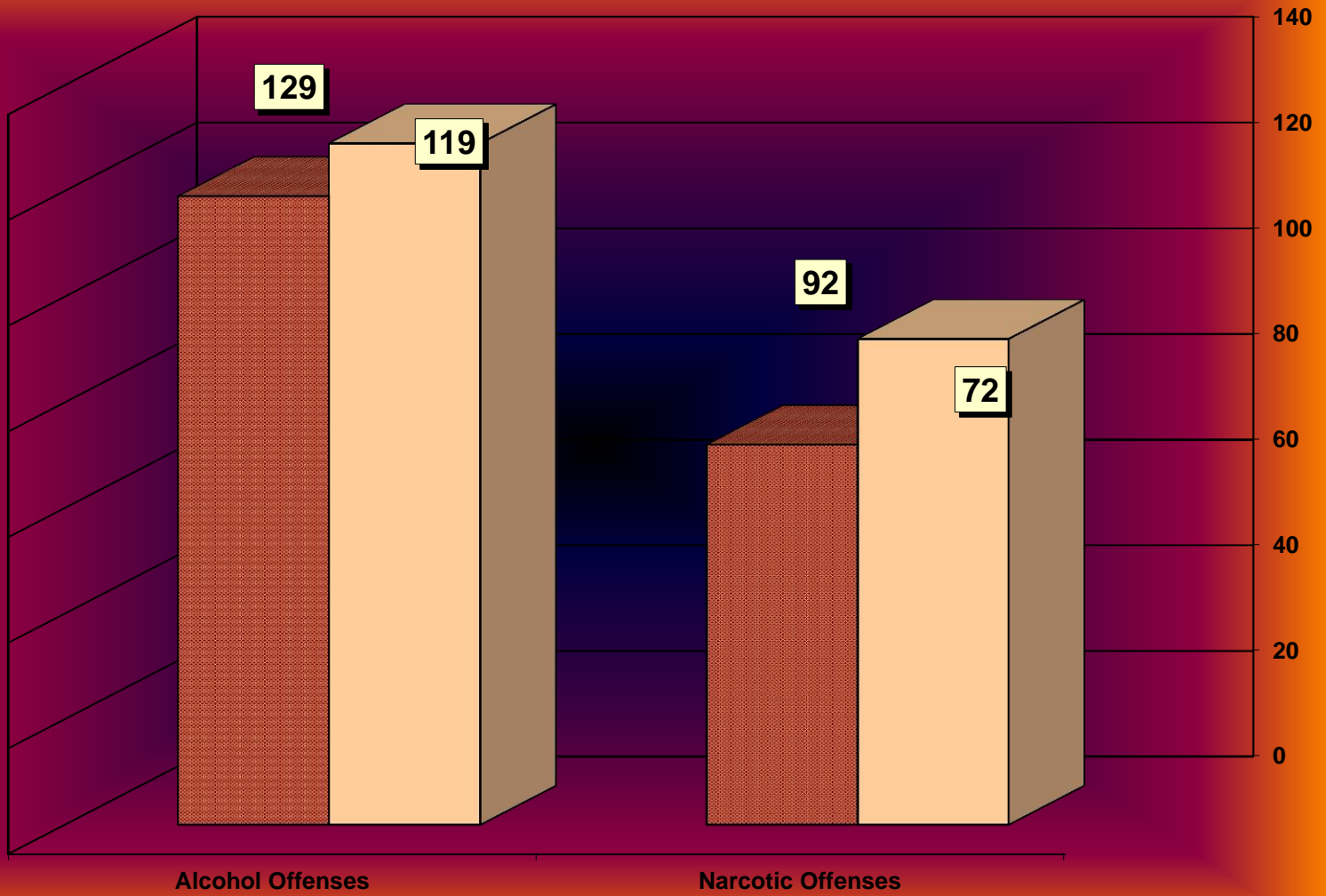
## SERVICE & NON-SERVICE REQUESTS 2014 - 2015



# TRAFFIC CITATIONS



# NARCOTIC / ALCOHOL OFFENSES 2014 - 2015



□ 2014 YTD  
■ 2015 YTD



# Department Actions

