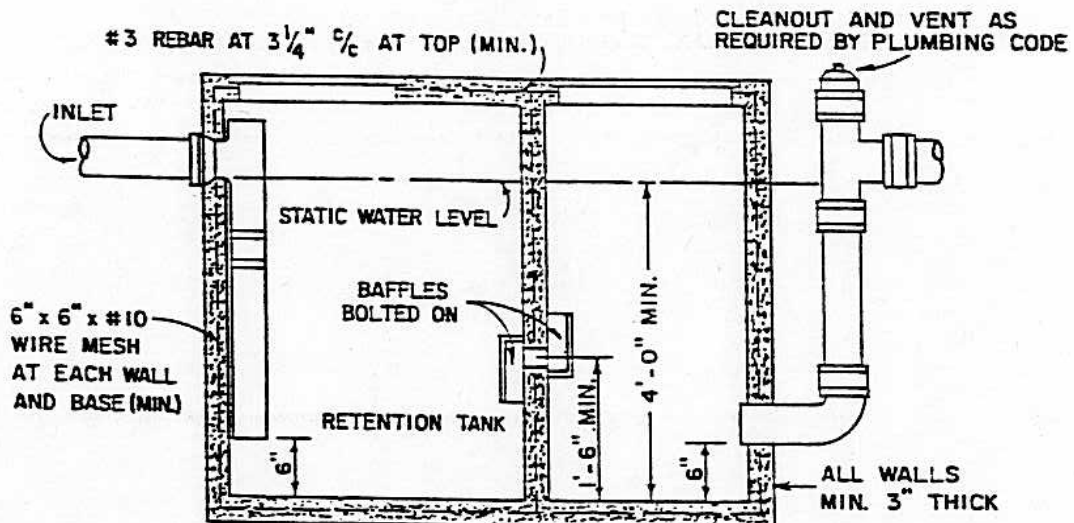


PLAN



SECTION

NOTES:

1. UNIT SHALL BE DESIGNED FOR TRAFFIC LOADING BY A REGISTERED CIVIL ENGINEER.
2. UNIT SHALL BE DESIGNED IN ACCORDANCE WITH CHAPTER 7 "TRAPS AND INTERCEPTORS", AND APPENDIX H "PROCEDURES FOR SIZING COMMERCIAL KITCHEN GREASE INTERCEPTORS" OF THE UNIFORM PLUMBING CODE.
3. CALCULATIONS AND SUPPORTING DATA MUST BE SUBMITTED TO THE CITY ENGINEER FOR APPROVAL.
4. ALL PIPING SHALL BE FOUR (4) INCHES MINIMUM AND BE OF A MATERIAL APPROVED BY THE UNIFORM PLUMBING CODE.
5. MANHOLE COVERS SHALL BE GAS TIGHT IN CONSTRUCTION HAVING A MINIMUM OPENING DIMENSION OF TWENTY (20) INCHES.

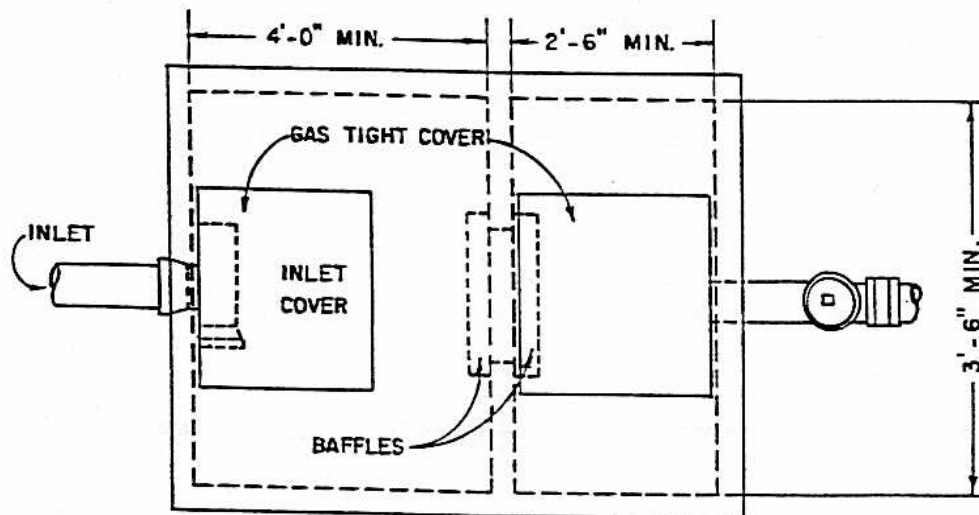
NO.	REVISED	BY
1	JAN. 1987	JP
DRAWN BY: J. KOESTER		
CHECKED BY: J. PODESTA		
SCALE: NONE		

TYPICAL GREASE INTERCEPTOR

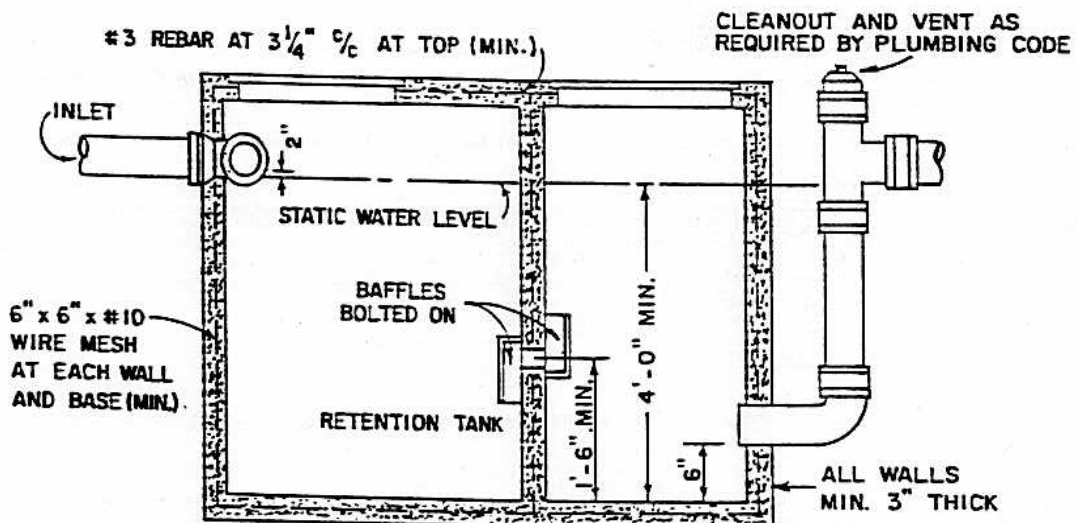
CITY OF MANTECA
DEPARTMENT OF PUBLIC WORKS

APPROVED BY:
[Signature]
DIRECTOR OF PUBLIC WORKS

DRAWING NO. **M-1**
DATE: JAN. 1988



PLAN

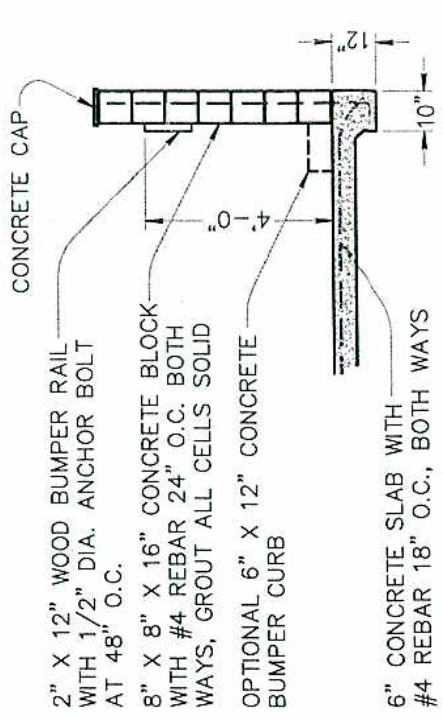


SECTION

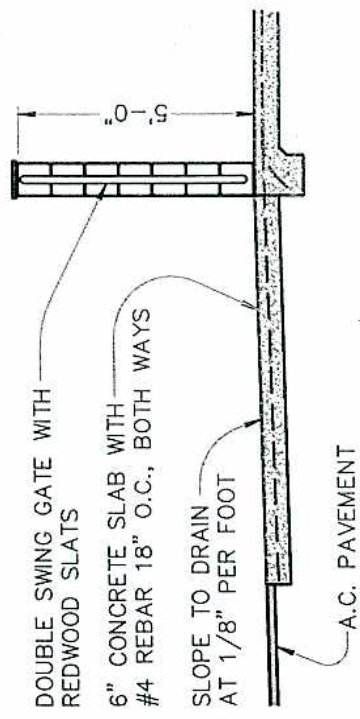
NOTES:

1. UNIT SHALL BE DESIGNED FOR TRAFFIC LOADING BY A REGISTERED CIVIL ENGINEER.
2. UNIT SHALL BE DESIGNED IN ACCORDANCE WITH CHAPTER 7 "TRAPS AND INTERCEPTORS" OF THE UNIFORM PLUMBING CODE.
3. CALCULATIONS AND SUPPORTING DATA MUST BE SUBMITTED TO THE CITY ENGINEER FOR APPROVAL.
4. ALL PIPING SHALL BE FOUR (4) INCHES MINIMUM AND BE OF A MATERIAL APPROVED BY THE UNIFORM PLUMBING CODE.
5. MANHOLE COVERS SHALL BE GAS TIGHT IN CONSTRUCTION HAVING A MINIMUM OPENING DIMENSION OF TWENTY (20) INCHES.

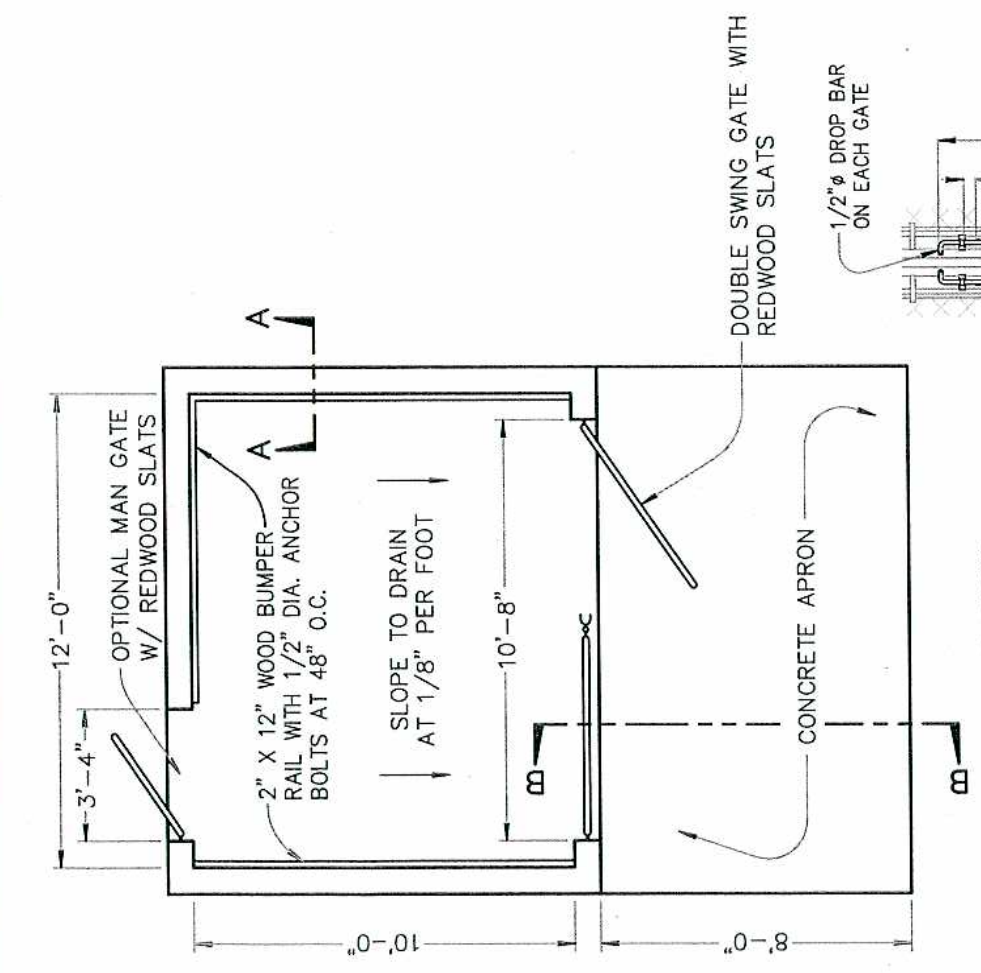
NO.	REVISED	BY	<h2 style="margin: 0;">TYPICAL SAND - SILT AND OIL INTERCEPTOR</h2> <p style="margin: 0;">CITY OF MANTECA DEPARTMENT OF PUBLIC WORKS</p>	APPROVED BY:  DIRECTOR OF PUBLIC WORKS
DRAWN BY: J. KOESTER				DRAWING NO. M-2
CHECKED BY: J. PODESTA				
SCALE: NONE				



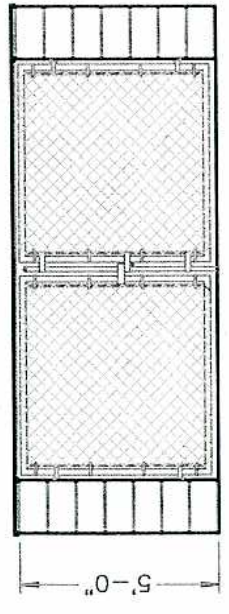
SECTION A-A



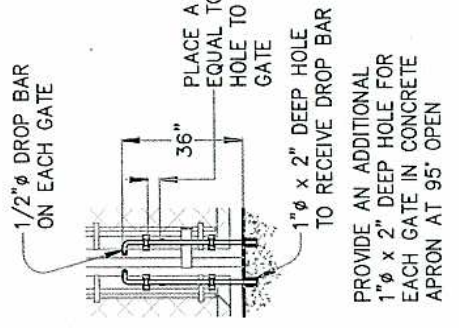
SECTION B-B



PLAN VIEW



FRONT ELEVATION



CANE BOLT LATCH


NOTES

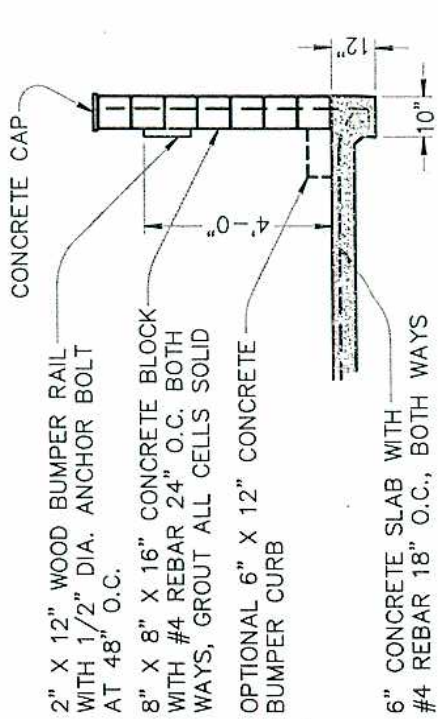
1. A SMALL ENCLOSURE IS REQUIRED FOR THE FOLLOWING BUILDING TYPES & SIZES:
 - (a) OFFICE & GENERAL COMMERCIAL LESS THAN 10,000 SQ.FT.
 - (b) MULTI-FAMILY COMPLEXES LESS THAN 15 UNITS.
2. CHAIN LINK GATES, POSTS, LATCHES, AND APPURTENANCES SHALL CONFORM TO CALTRANS STANDARDS.

NO.	REVISED	BY
1	SEPT 21, 2006	JR
DRAWN BY:		J. HULSEY
CHECKED BY:		J. PODESTA
SCALE:		NOT TO SCALE

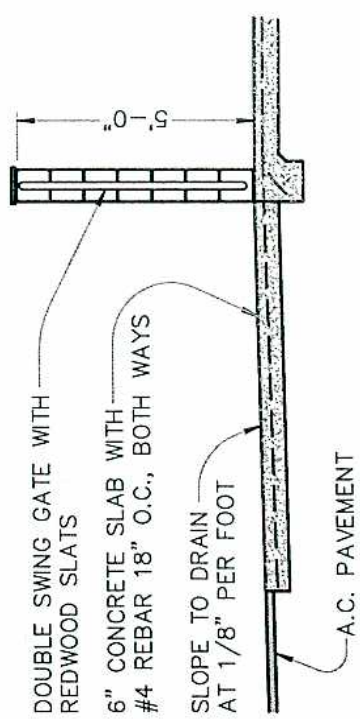
SMALL REFUSE/RECYCLING MASONRY BLOCK ENCLOSURE

CITY OF MANTECA
DEPARTMENT OF PUBLIC WORKS

APPROVED BY:	
DIRECTOR OF PUBLIC WORKS	
DRAWING NO.	M-3A
DATE:	JAN. 2003



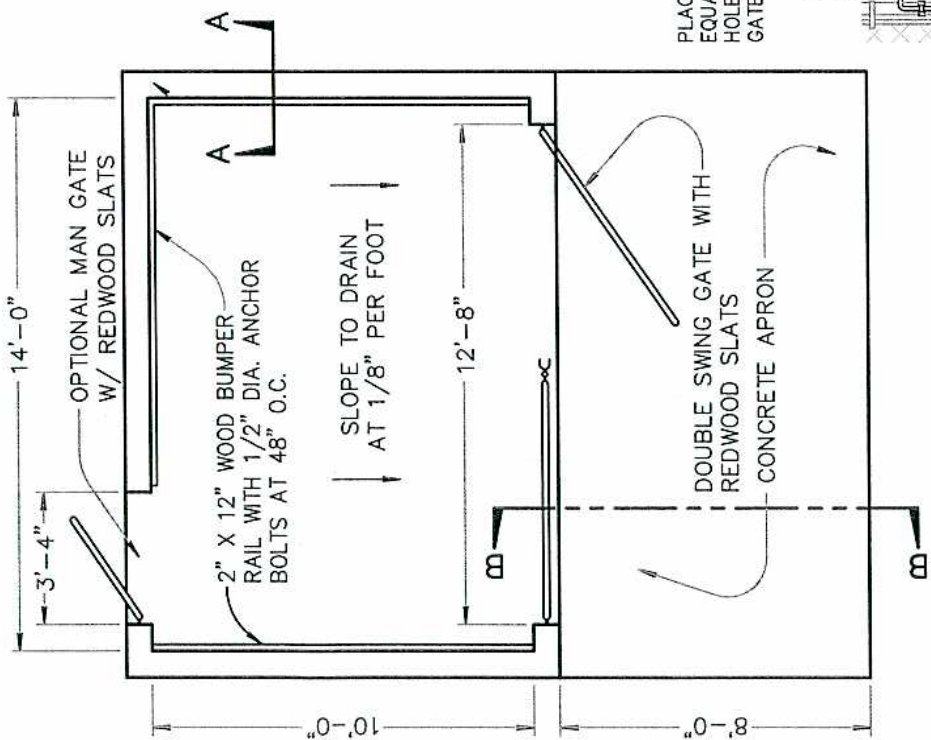
SECTION A-A



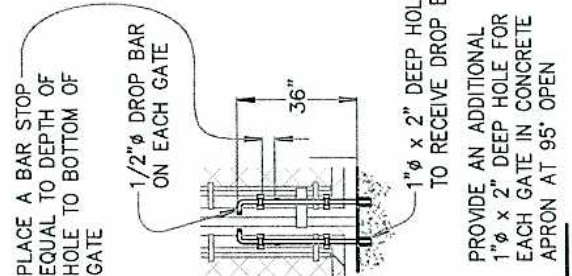
SECTION B-B

NOTES

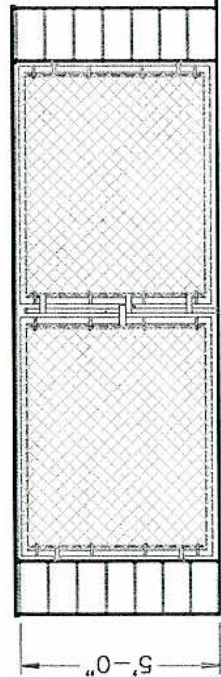
1. A MEDIUM ENCLOSURE IS REQUIRED FOR THE FOLLOWING BUILDING TYPES & SIZES:
 - (a) INDUSTRIAL LESS THAN 15,000 SQ. FT.
 - (b) OFFICE & GENERAL COMMERCIAL - 10,000 TO 14,999 SQ.FT.
 - (c) RETAIL LESS THAN 5,000 SQ. FT.
 - (d) BAR & RESTAURANT LESS THAN 5,000 SQ. FT.
 - (e) MULTI-FAMILY COMPLEXES - 15 TO 24 UNITS.
2. CHAIN LINK GATES, POSTS, LATCHES, AND APPURTENANCES SHALL CONFORM TO CALTRANS STANDARDS.



PLAN VIEW



CANE BOLT LATCH



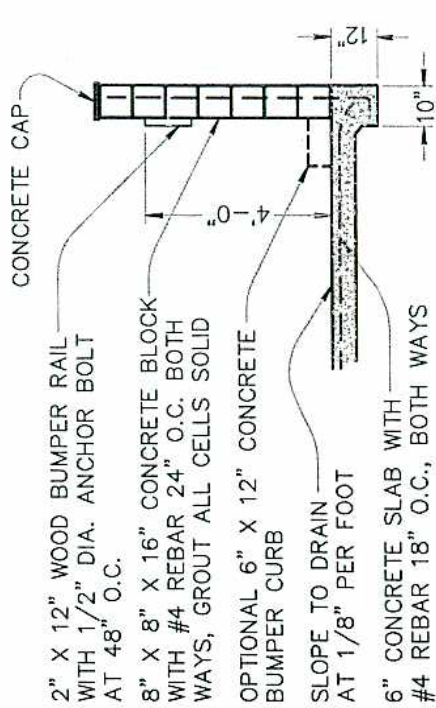
FRONT ELEVATION

NO.	REVISED	BY
1	SEPT 21, 2006	JR
DRAWN BY:		J. HULSEY
CHECKED BY:		J. PODESTA
SCALE:		NOT TO SCALE

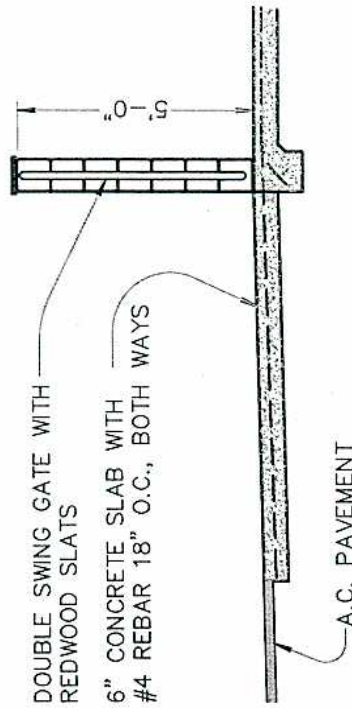
MEDIUM REFUSE/RECYCLING MASONRY BLOCK ENCLOSURE

CITY OF MANTECA
DEPARTMENT OF PUBLIC WORKS

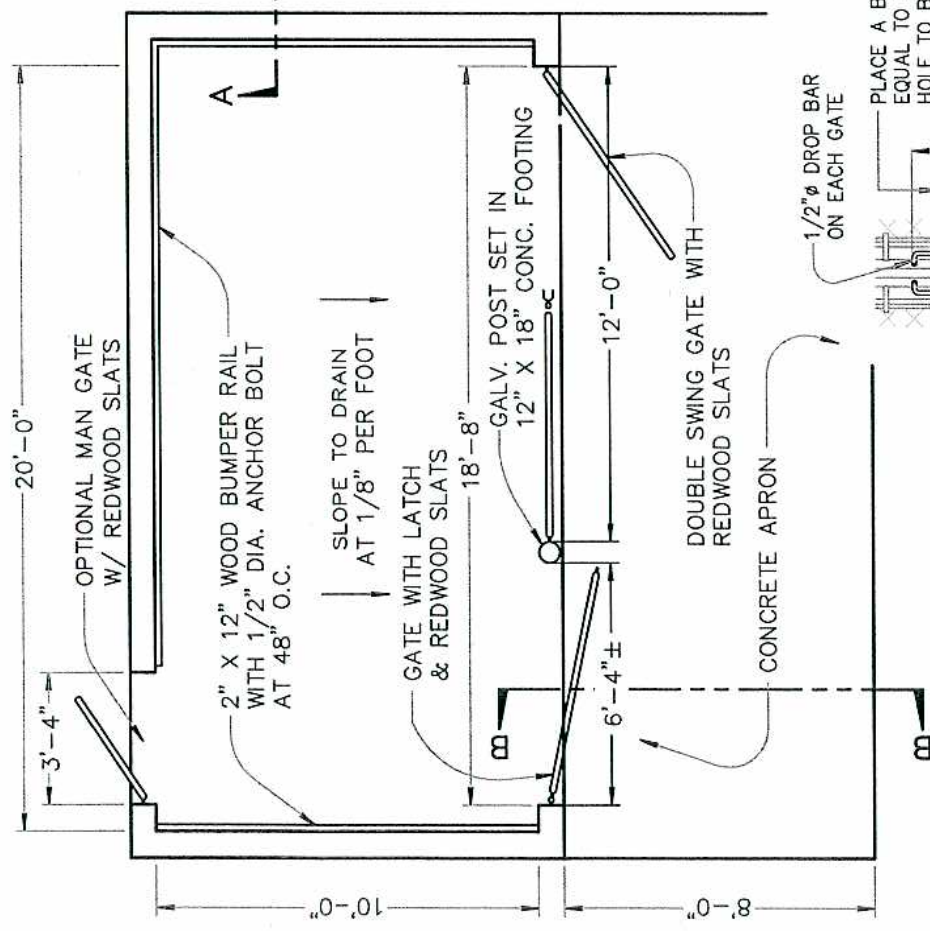
APPROVED BY:	<i>Michael J. Bratton</i>
DIRECTOR OF PUBLIC WORKS	
DRAWING NO.	M-3B
DATE:	JAN. 2003



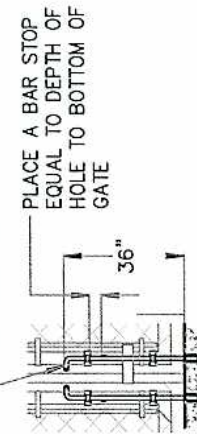
SECTION A-A



SECTION B-B

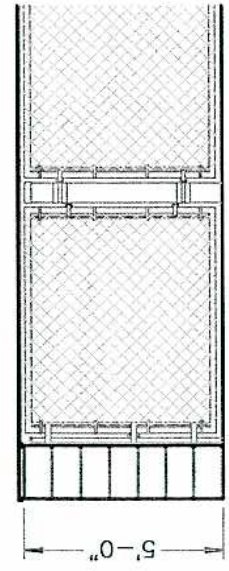


PLAN VIEW



1" ϕ x 2" DEEP HOLE TO RECEIVE DROP BAR

PROVIDE AN ADDITIONAL 1" ϕ x 2" DEEP HOLE FOR EACH GATE IN CONCRETE APRON AT 95° OPEN



FRONT ELEVATION

NOTES

1. A LARGE ENCLOSURE IS REQUIRED FOR THE FOLLOWING BUILDING TYPES & SIZES:
 - (a) INDUSTRIAL - 15,000 TO 40,000 SQ. FT.
 - (b) OFFICE & GENERAL COMMERCIAL - 15,000 TO 40,000 SQ.FT.
 - (c) RETAIL - 5,000 TO 20,000 SQ. FT.
 - (d) BAR & RESTAURANT - 5,000 TO 20,000 SQ.FT.
 - (e) MULTI-FAMILY COMPLEXES - 25 TO 50 UNITS.

2. CHAIN LINK GATES, POSTS, LATCHES, AND APPURTENANCES SHALL CONFORM TO CALTRANS STANDARDS.

NO.	REVISED	BY
1	SEPT 21, 2006	JR
DRAWN BY:		J. HULSEY
CHECKED BY:		J. PODESTA
SCALE:		NOT TO SCALE

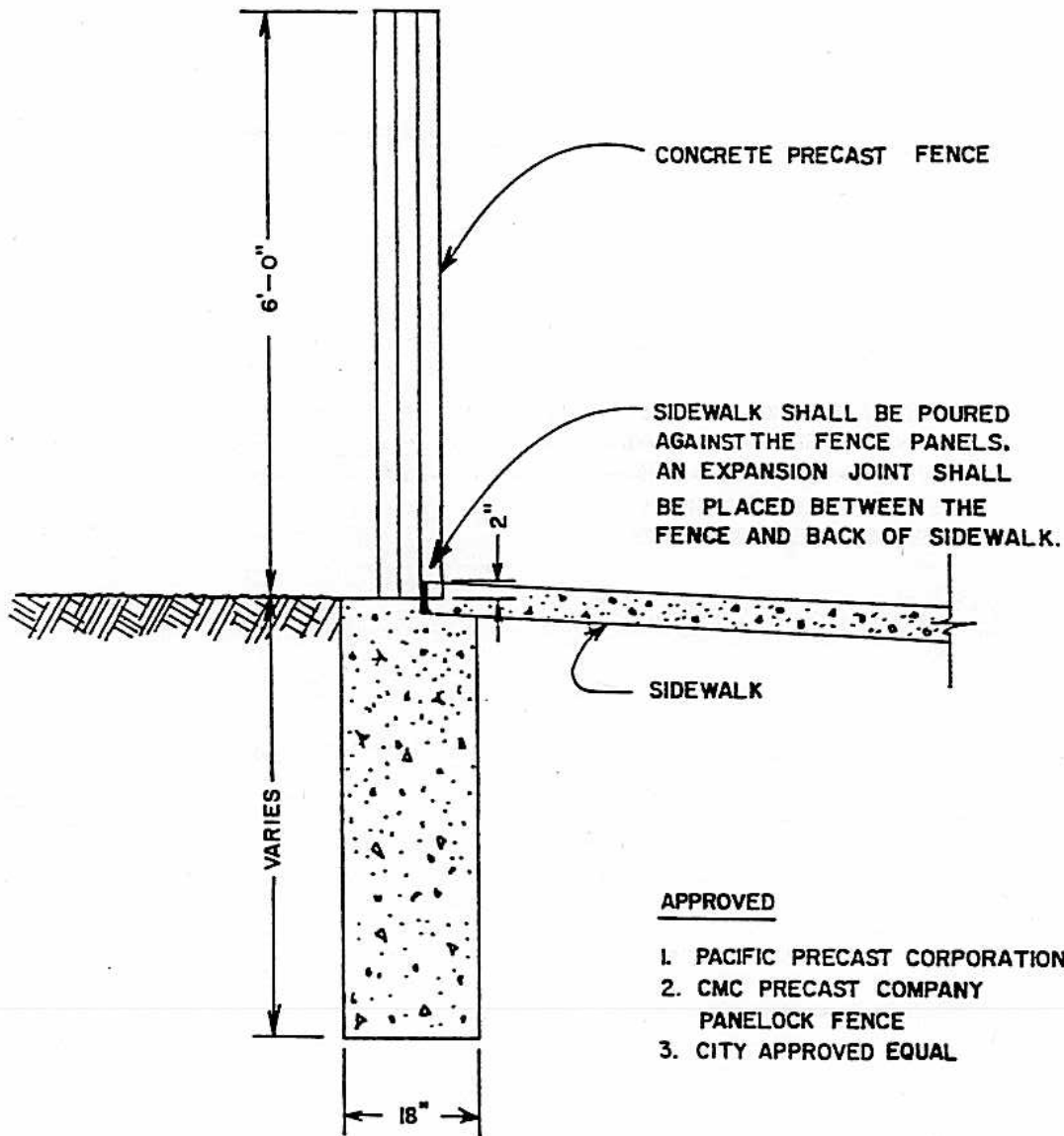
LARGE REFUSE/RECYCLING MASONRY BLOCK ENCLOSURE

CITY OF MANTECA
DEPARTMENT OF PUBLIC WORKS

APPROVED BY:
Michael J. Britton
DIRECTOR OF PUBLIC WORKS

DRAWING NO. **M-3C**

DATE: JAN. 2003



APPROVED

1. PACIFIC PRECAST CORPORATION
2. CMC PRECAST COMPANY
PANELOCK FENCE
3. CITY APPROVED EQUAL

NOTES:

1. DESIGN AND PLACEMENT SHALL HAVE APPROVAL OF CITY ENGINEER.

NO.	REVISED	BY	CONCRETE PRECAST FENCE	APPROVED BY:
				<i>M. Bunton</i>
DRAWN BY: A. MENOR				DIRECTOR OF PUBLIC WORKS
CHECKED BY: J. PODESTA				DRAWING NO. M-6
SCALE: NONE			CITY OF MANTECA DEPARTMENT OF PUBLIC WORKS	DATE: JAN. 1988