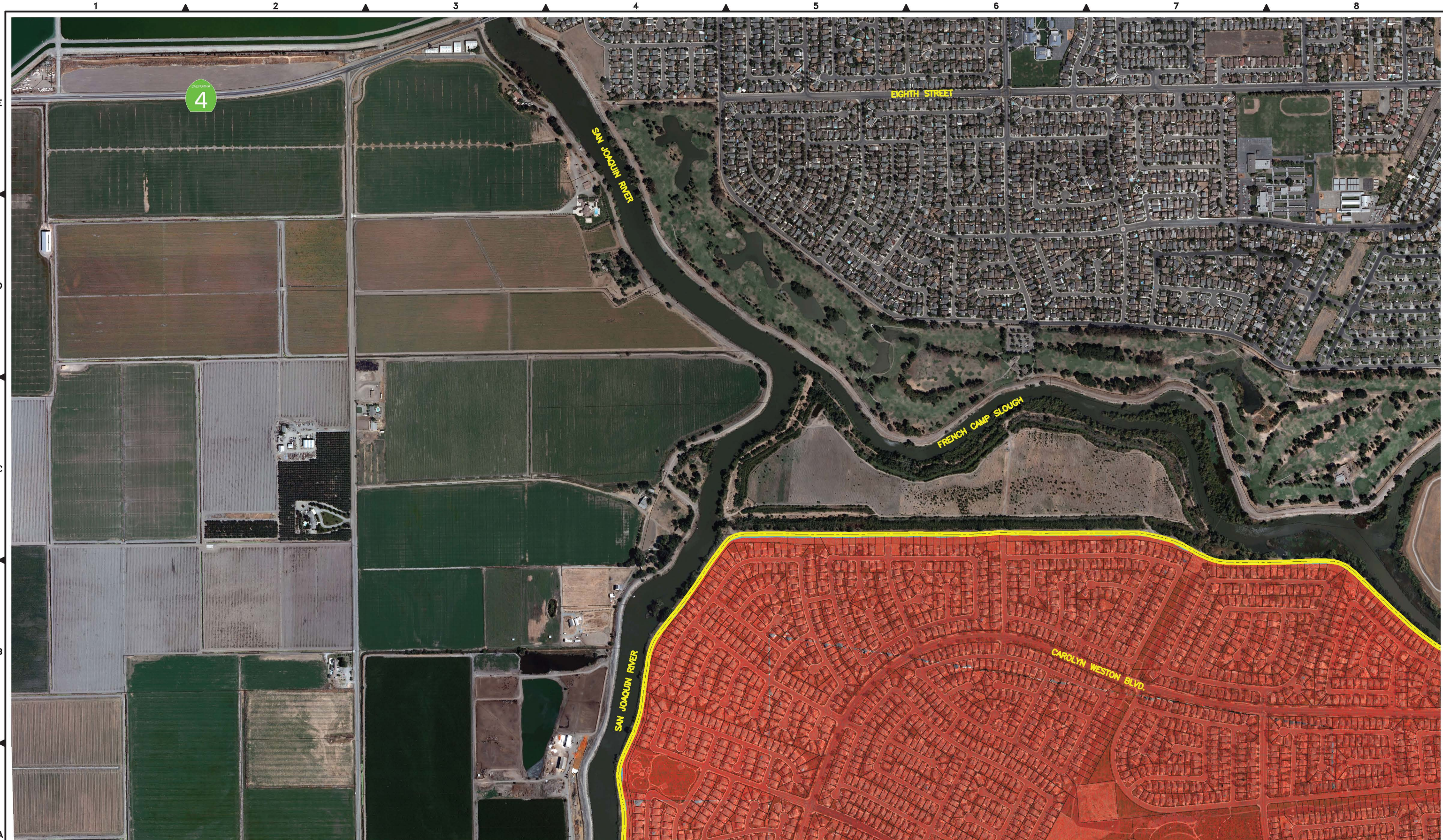






FILE SPEC: P:\0856-Mossdale\0610_SBS_Levee_Evaluation\05_Civil\CAD\Sheets\Sht_Plan_A.dwg
 PLOT DATE: May 23, 2014 - 12:50pm



LEGEND:

	0' TO 3' FLOOD DEPTH
	>3' FLOOD DEPTH
	RD 17 LEVEE
	RD 17 BOUNDARY


NOTES:

- OVERBANK FLOODING FROM FRENCH CAMP SLOUGH IS NOT INCLUDED IN THIS ANALYSIS.

K S N INC.	KJELDEN SINNOCK NEUDECK	711 N. Pershing Avenue Stockton, CA 95203 (209) 946-0268
	Civil Engineers and Land Surveyors	1355 Halyard Drive, Suite 180 West Sacramento, CA 95691 (916) 403-5900
		www.ksninc.com

Scale
1" = 400'

Original Drawing Scale
0 1/2" 1"








**CITIES OF LATHROP AND MANTECA
 200-YEAR PLAN
 200-YEAR COMPOSITE FLOODPLAIN MAP
 EXHIBIT A-1 AREA MAP**

**EXHIBIT
 A
 PAGE 1**

FILE SPEC: P:\0856-Mossdale\0610_SBS_Levee_Evaluation\05_Civil\CAD\Sheets\Shr_Plan_A.dwg
 PLOT DATE: May 23, 2014 - 12:52pm




LEGEND:

	0' TO 3' FLOOD DEPTH
	>3' FLOOD DEPTH
	RD 17 LEVEE
	RD 17 BOUNDARY

NOTES:

- OVERBANK FLOODING FROM FRENCH CAMP SLOUGH IS NOT INCLUDED IN THIS ANALYSIS.

K S N INC. **KJELDEN SINNOCK NEUDECK**
 Civil Engineers and Land Surveyors
 711 N. Pershing Avenue
 Stockton, CA 95203
 (209) 946-0268
 1355 Halyard Drive, Suite 180
 West Sacramento, CA 95691
 (916) 403-5900
 www.ksninc.com

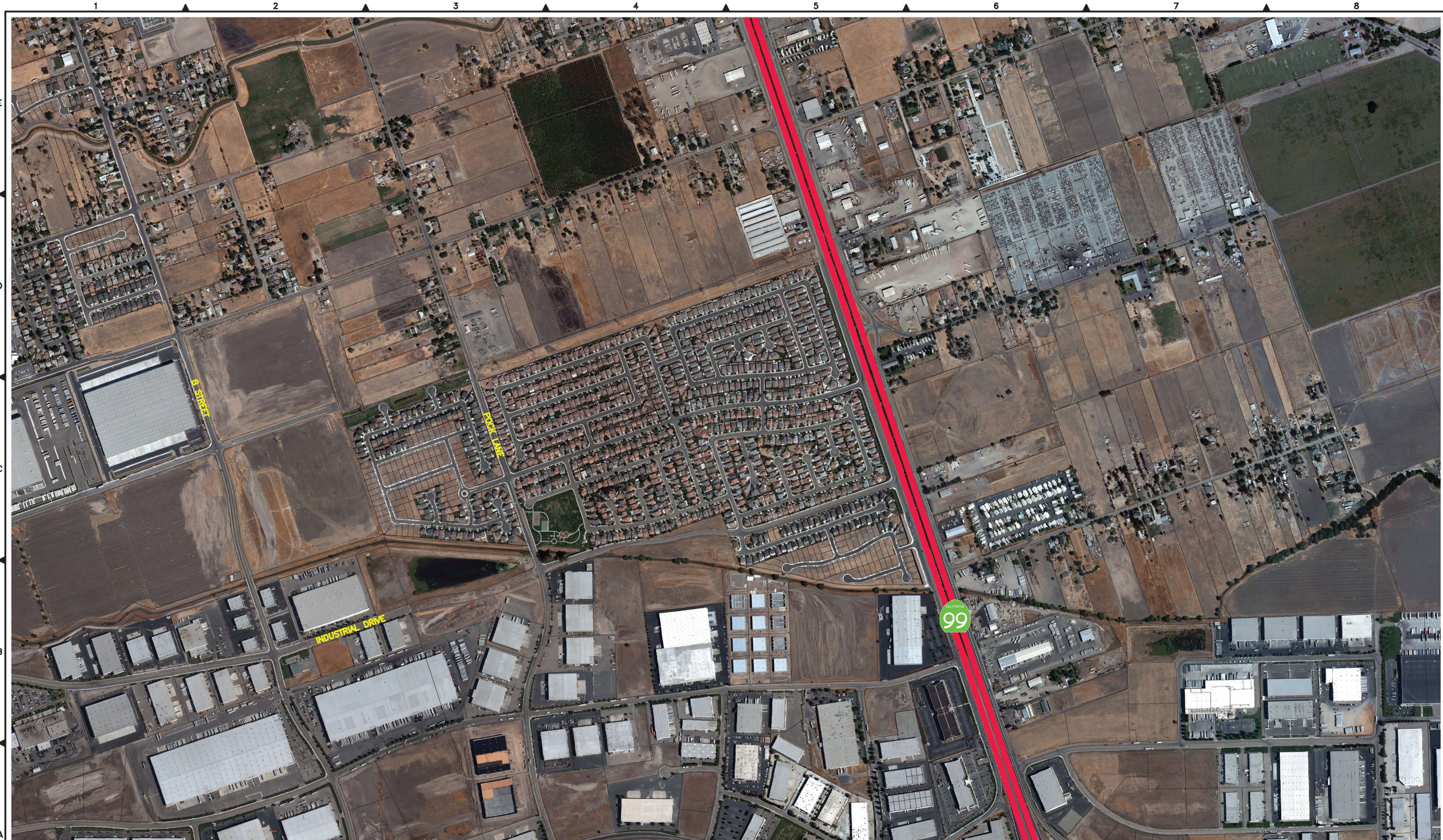
Scale
 1" = 400'
 Original Drawing Scale
 0 1/2" 1"








**CITIES OF LATHROP AND MANTECA
 200-YEAR PLAN
 200-YEAR COMPOSITE FLOODPLAIN MAP
 EXHIBIT A-2 AREA MAP**

**EXHIBIT
 A
 PAGE 2**

FILE SPEC: P:\0856-Mossdale\0610_SBS_Levee_Evaluation\05_Civil\CAD\Sheets\Shr_Plan_A.dwg
PLOT DATE: May 23, 2014 - 12:54pm



LEGEND:


	0' TO 3' FLOOD DEPTH
	>3' FLOOD DEPTH
	RD 17 LEVEE
	RD 17 BOUNDARY

NOTES:

1. OVERBANK FLOODING FROM FRENCH CAMP SLOUGH IS NOT INCLUDED IN THIS ANALYSIS.

K S N
INC.
**KJELDEN
SINNOCK
NEUDECK**
Civil Engineers
and Land Surveyors

711 N. Pershing Avenue
Stockton, CA 95203
(209) 946-0268
1355 Halyard Drive, Suite 180
West Sacramento, CA 95691
(916) 403-5900
www.ksninc.com

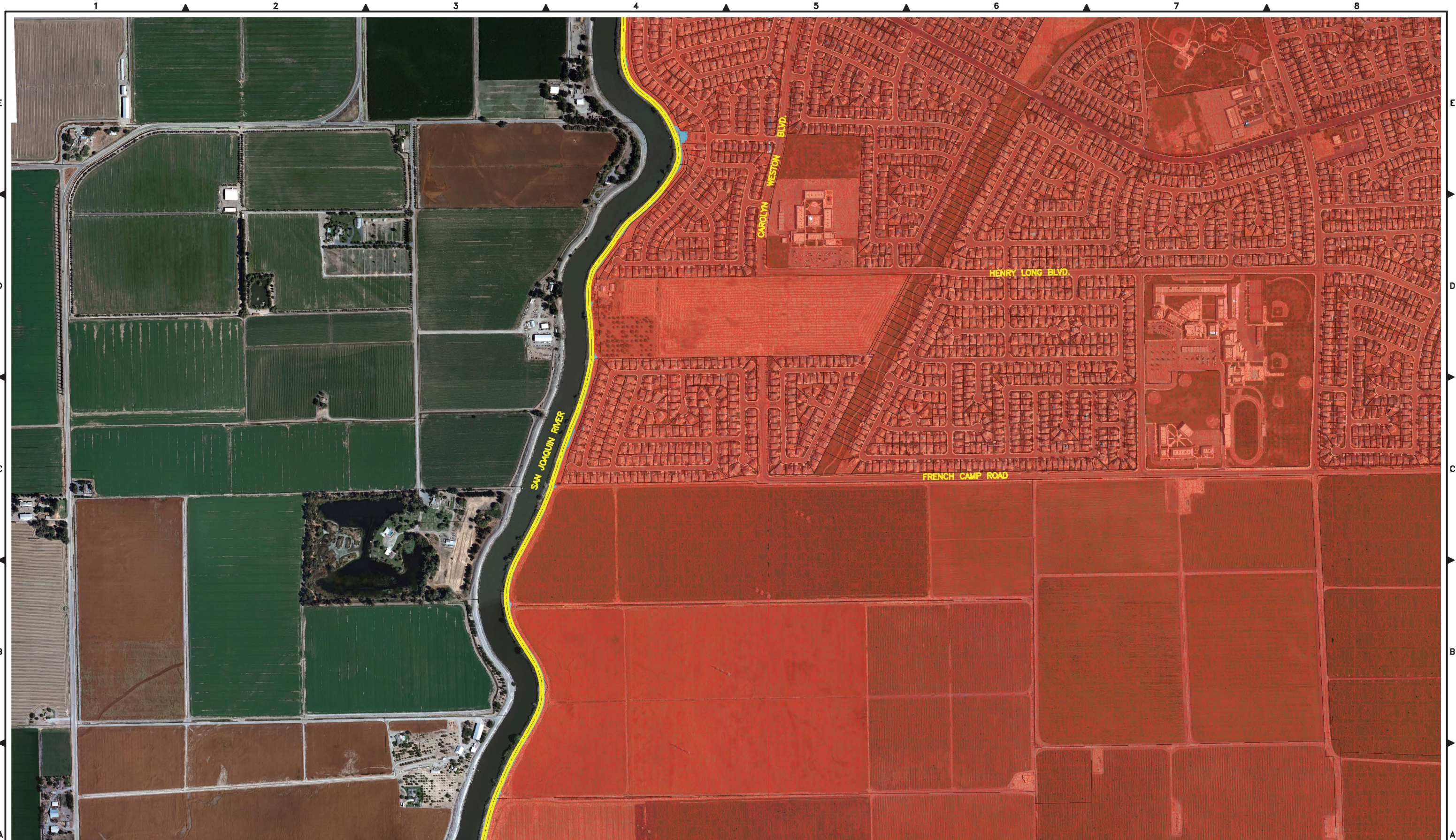
Scale
1" = 400'
Original Drawing Scale
0 1/2" 1"








CITIES OF LATHROP AND MANTECA
200-YEAR PLAN
200-YEAR COMPOSITE FLOODPLAIN MAP
EXHIBIT A-3 AREA MAP

EXHIBIT
A
PAGE 3

FILE SPEC: P:\0856-Mossdale\0610_SBS_Levee_Evaluation\05_Civil\CAD\Sheets\Sht_Plan_A.dwg
 PLOT DATE: May 23, 2014 - 1:08pm



LEGEND:

	0' TO 3' FLOOD DEPTH
	>3' FLOOD DEPTH
	RD 17 LEVEE
	RD 17 BOUNDARY


NOTES:

1. OVBANK FLOODING FROM FRENCH CAMP SLOUGH IS NOT INCLUDED IN THIS ANALYSIS.

K S N INC.	KJELDEN SINNOCK NEUDECK	711 N. Pershing Avenue Stockton, CA 95203 (209) 946-0268
	Civil Engineers and Land Surveyors	1355 Halyard Drive, Suite 180 West Sacramento, CA 95691 (916) 403-5900
		www.ksninc.com

Scale
1" = 400'

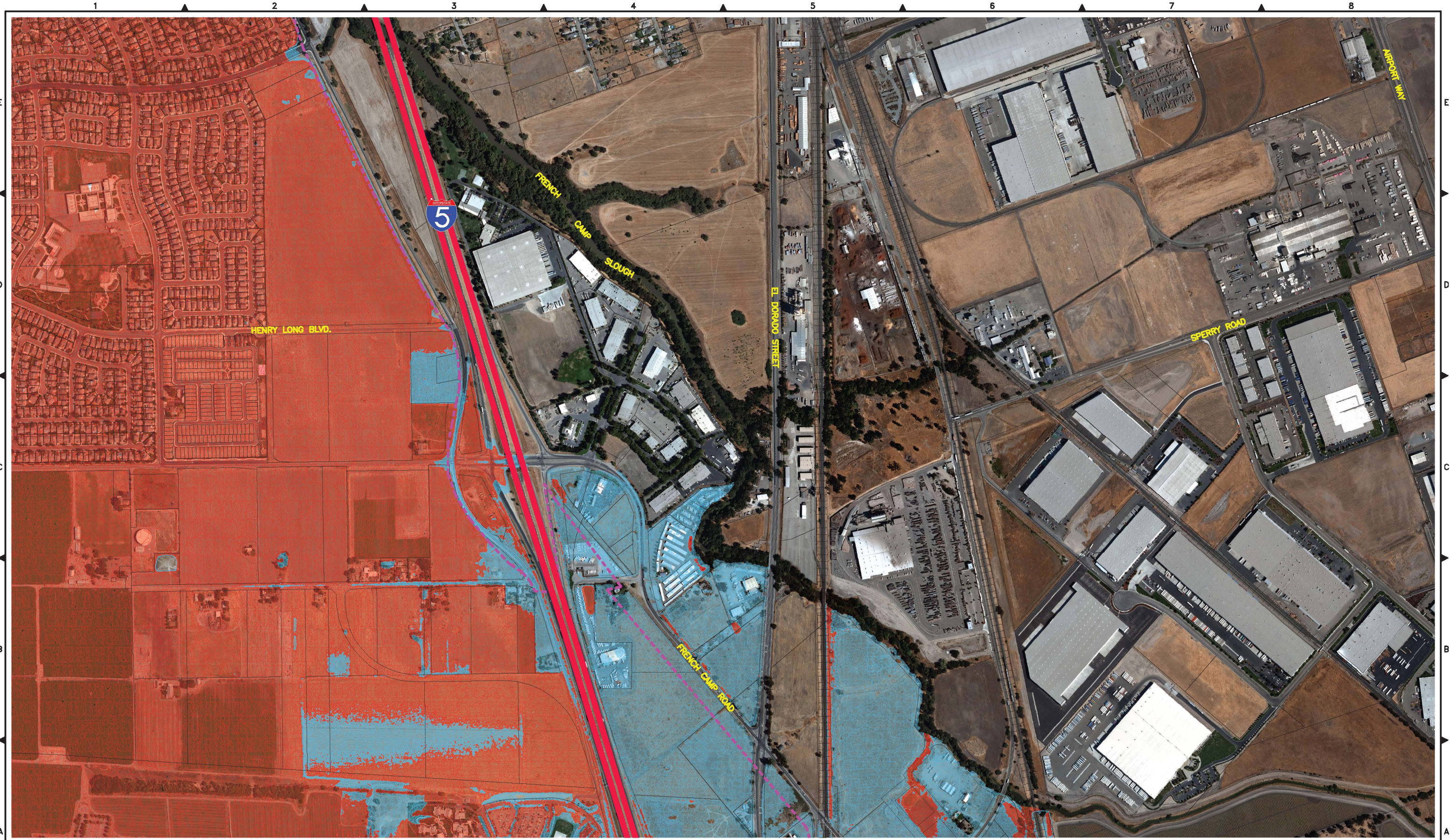
Original Drawing Scale
0 1/2" 1"




CITIES OF LATHROP AND MANTECA
 200-YEAR PLAN
 200-YEAR COMPOSITE FLOODPLAIN MAP
 EXHIBIT A-4 AREA MAP

EXHIBIT
 A
 PAGE 4

FILE SPEC: P:\0856-Mossdale\0610_SBS_Levee_Evaluation\05_Civil\CAD\Sheets\Sht_Plan_A.dwg
 PLOT DATE: May 23, 2014 - 1:10pm



LEGEND:

	0' TO 3' FLOOD DEPTH
	>3' FLOOD DEPTH
	RD 17 LEVEE
	RD 17 BOUNDARY

NOTES:

- OVERBANK FLOODING FROM FRENCH CAMP SLOUGH IS NOT INCLUDED IN THIS ANALYSIS.

K S N
KJELDEN SINNOCK NEUDECK
 INC. Civil Engineers and Land Surveyors

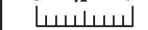
711 N. Pershing Avenue
 Stockton, CA 95203
 (209) 946-0268
 1355 Halyard Drive, Suite 180
 West Sacramento, CA 95691
 (916) 403-5900
 www.ksninc.com

Scale

1" = 400'

Original Drawing Scale

0 1/2" 1"







CITIES OF LATHROP AND MANTECA
200-YEAR PLAN
200-YEAR COMPOSITE FLOODPLAIN MAP
EXHIBIT A-5 AREA MAP

EXHIBIT
A
PAGE 5

FILE SPEC: P:\0856-Mossdale\0610_SBS_Levee_Evaluation\05_Civil\CAD\Sheets\Sht_Plan_A.dwg
 PLOT DATE: May 23, 2014 1:12pm



LEGEND:

	0' TO 3' FLOOD DEPTH
	>3' FLOOD DEPTH
	RD 17 LEVEE
	RD 17 BOUNDARY


NOTES:

1. OVERBANK FLOODING FROM FRENCH CAMP SLOUGH IS NOT INCLUDED IN THIS ANALYSIS.

K S N INC.	KJELDEN SINNOCK NEUDECK	711 N. Pershing Avenue Stockton, CA 95203 (209) 946-0268
	Civil Engineers and Land Surveyors	1355 Halyard Drive, Suite 180 West Sacramento, CA 95691 (916) 403-5900
		www.ksninc.com

Scale
1" = 400'

Original Drawing Scale
0 1/2" 1"








**CITIES OF LATHROP AND MANTECA
 200-YEAR PLAN
 200-YEAR COMPOSITE FLOODPLAIN MAP
 EXHIBIT A-6 AREA MAP**

**EXHIBIT
 A
 PAGE 6**

FILE SPEC: P:\0856-Mossdale\0610_SBS_Levee_Evaluation\05_Civil\CAD\Sheets\Sht_Plan_A.dwg
PLOT DATE: May 23, 2014 - 1:16pm



- LEGEND:**
-  0' TO 3' FLOOD DEPTH
 -  >3' FLOOD DEPTH
 -  RD 17 LEVEE
 -  RD 17 BOUNDARY


NOTES:

1. OVERBANK FLOODING FROM FRENCH CAMP SLOUGH IS NOT INCLUDED IN THIS ANALYSIS.

K S N INC.	KJELDSSEN SINNOCK NEUDECK	711 N. Pershing Avenue Stockton, CA 95203 (209) 946-0268	
	Civil Engineers and Land Surveyors	1355 Halyard Drive, Suite 180 West Sacramento, CA 95691 (916) 403-5900 www.ksninc.com	

Scale
1" = 400'

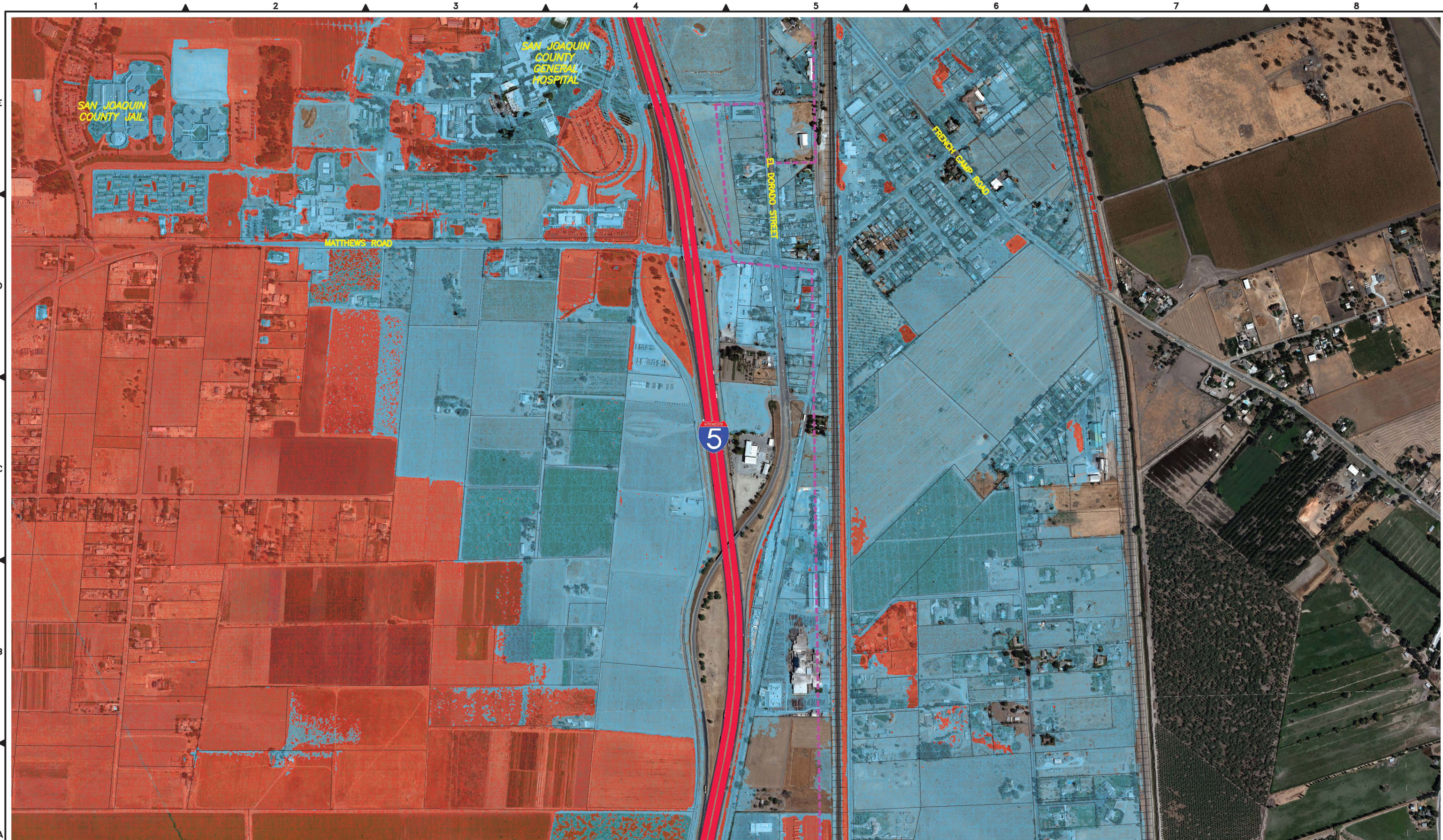
Original Drawing Scale
0 1/2" 1"



CITIES OF LATHROP AND MANTECA
200-YEAR PLAN
200-YEAR COMPOSITE FLOODPLAIN MAP
EXHIBIT A-7 AREA MAP

EXHIBIT
A
PAGE 7

FILE SPEC: P:\0856-Mossdale\0610_SBS_Levee_Evaluation\05_Civil\CAO\Sheets\Sht_Plan_A.dwg
PLOT DATE: May 23, 2014 - 1:19pm



- LEGEND:**
- 0' TO 3' FLOOD DEPTH
 - >3' FLOOD DEPTH
 - RD 17 LEVEE
 - RD 17 BOUNDARY

NOTES:

1. OVERBANK FLOODING FROM FRENCH CAMP SLOUGH IS NOT INCLUDED IN THIS ANALYSIS.

K S N INC.	KJELDEN SINNOCK NEUDECK	711 N. Pershing Avenue Stockton, CA 95203 (209) 946-0268
	Civil Engineers and Land Surveyors	1355 Halyard Drive, Suite 180 West Sacramento, CA 95691 (916) 403-5900
		www.ksninc.com

Scale
1" = 400'

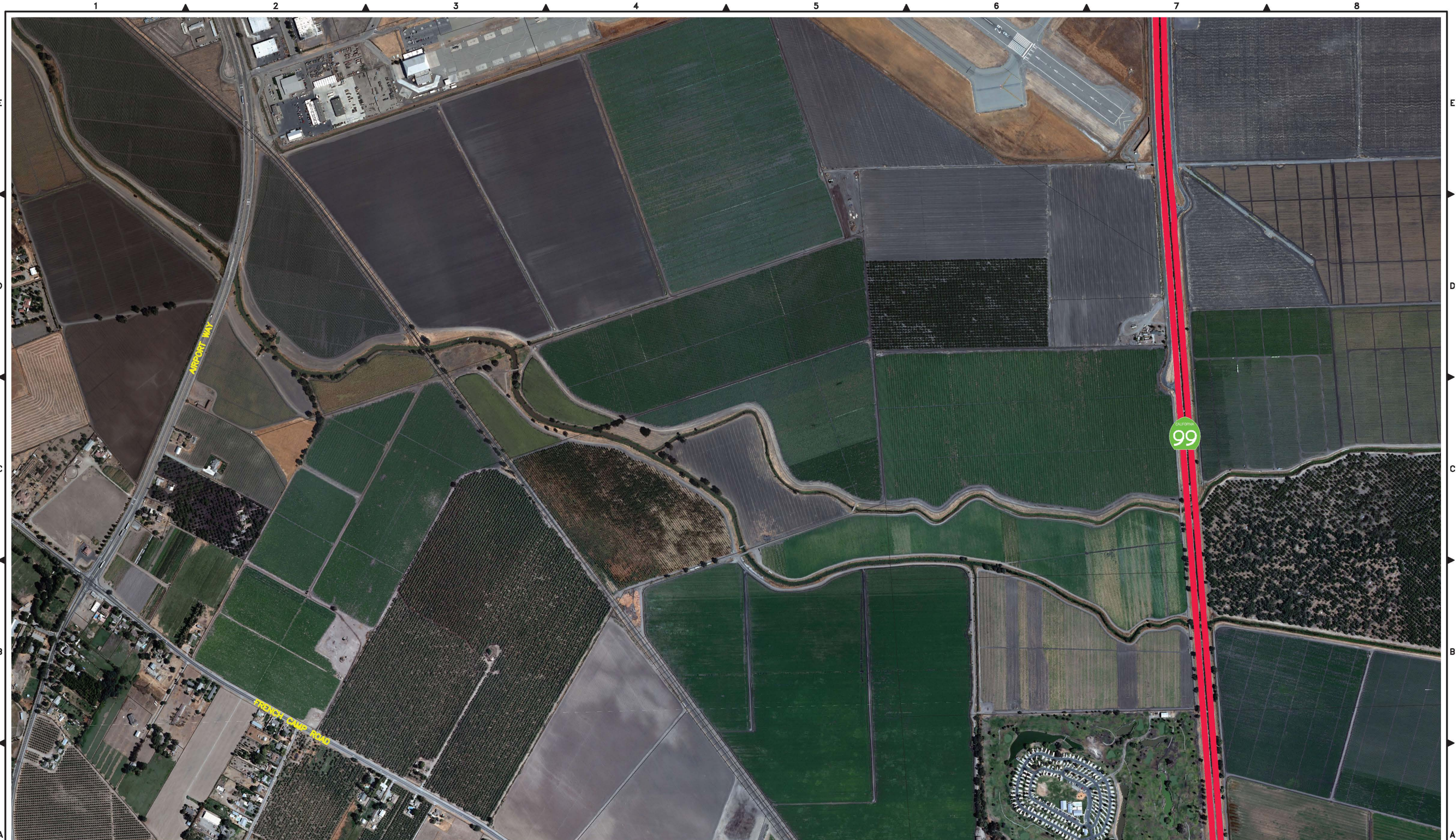
Original Drawing Scale
0 1/2" 1"



**CITIES OF LATHROP AND MANTECA
200-YEAR PLAN
200-YEAR COMPOSITE FLOODPLAIN MAP
EXHIBIT A-8 AREA MAP**

**EXHIBIT
A
PAGE 8**

FILE SPEC: P:\0856-Mossdale\0610_SBS_Levee_Evaluation\05_Civil\CAD\Sheets\Shr_Plan_A.dwg
PLOT DATE: May 23, 2014 - 1:21pm



- LEGEND:**
- 0' TO 3' FLOOD DEPTH
 - >3' FLOOD DEPTH
 - RD 17 LEVEE
 - RD 17 BOUNDARY

NOTES:

1. OVERBANK FLOODING FROM FRENCH CAMP SLOUGH IS NOT INCLUDED IN THIS ANALYSIS.

K S N INC. **KJELDSSEN SINNOCK NEUDECK**
Civil Engineers and Land Surveyors

711 N. Pershing Avenue
Stockton, CA 95203
(209) 946-0268

1355 Halyard Drive, Suite 180
West Sacramento, CA 95691
(916) 403-5900
www.ksninc.com

Scale
1" = 400'

Original Drawing Scale
0 1/2" 1"



CITIES OF LATHROP AND MANTECA
200-YEAR PLAN
200-YEAR COMPOSITE FLOODPLAIN MAP
EXHIBIT A-9 AREA MAP

EXHIBIT
A
PAGE 9